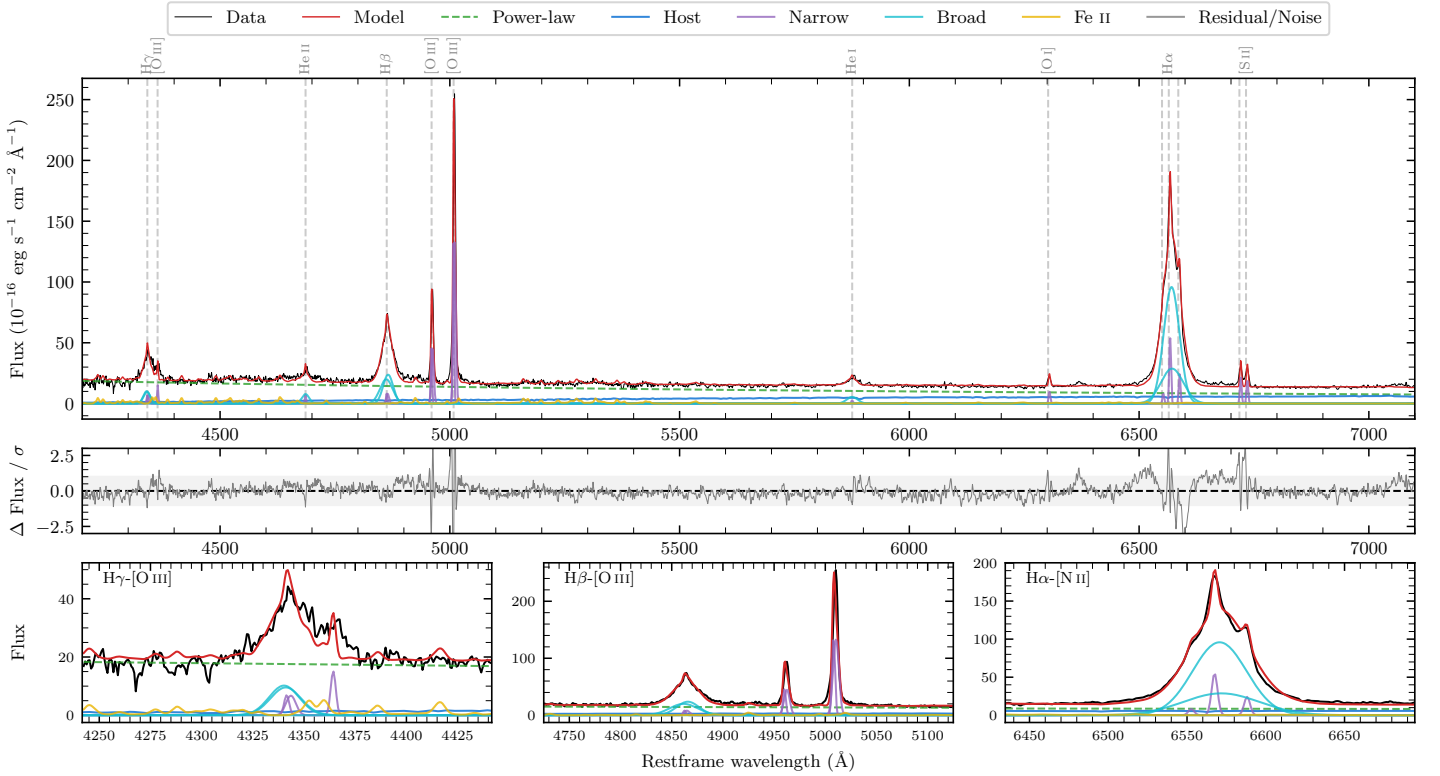
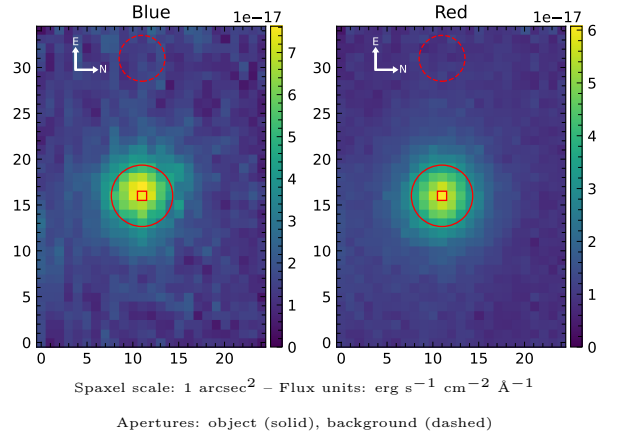


LEDA 154502

Spectrum ID	81567364_sp1	Spectrum Type	Sy 1.5
Alt name	WPVS 48	Quality Flag	good
z	0.0370	AGN reference	K+1998
RA, Dec	149.9277, -31.2162	MW $E(B - V)$	0.065
MJD	61034.72	Power law α_ν	-0.25 ± 0.52
SNR/Å B/R	3.3/5.8	$\log L_{5100, \text{AGN}}$	43.34 ± 0.06
Obs Airmass	1.01	$\log H\beta_{\text{Br}} / [\text{O III}]$	0.03 ± 0.05
SMSS ID	81567364	$\log M_{L5100} / M_\odot$	7.07 ± 0.08
Closest SMSS	11.04", 1102208423	$\log M_{\text{H}\alpha} / M_\odot$	7.24 ± 0.04
SMSS Mean r_{psf}	14.7 ± 0.0	$\log M_{\text{H}\beta} / M_\odot$	7.13 ± 0.08
2MASS K_{ext}	10.9 ± 0.1	$\log M_{[\text{O III}]} / M_\odot$	7.27 ± 0.07



Emission Line Measurements

Line	$\log L$ (erg s $^{-1}$)	FWHM (km s $^{-1}$)	σ (km s $^{-1}$)	EW (Å)
H γ Narrow	40.30 ± 0.31	—	194 ± 33	3.69 ± 1.03
Hγ Broad	41.13 ± 0.09	1204 ± 82	426 ± 30	21.59 ± 1.82
[O III] 4364	40.16 ± 0.29	207 ± 97	86 ± 41	2.83 ± 0.73
He II Narrow	39.85 ± 0.44	207 ± 97	86 ± 41	1.63 ± 0.67
He II Broad	40.71 ± 0.15	1186 ± 64	503 ± 26	10.43 ± 1.64
H β Narrow	40.41 ± 0.28	—	194 ± 33	6.01 ± 1.05
Hβ Broad	41.65 ± 0.03	1688 ± 143	673 ± 77	96.37 ± 2.21
[O III] 5007	41.62 ± 0.04	—	194 ± 33	107.48 ± 1.32
He I Narrow	39.55 ± 0.40	207 ± 97	86 ± 41	1.17 ± 0.52
He I Broad	40.71 ± 0.08	1401 ± 130	595 ± 54	16.15 ± 1.40
[O I] 6300	40.15 ± 0.20	207 ± 97	86 ± 41	5.14 ± 0.62
H α Narrow	40.92 ± 0.16	207 ± 97	86 ± 41	31.79 ± 1.33
Hα Broad	42.28 ± 0.01	1930 ± 85	756 ± 44	713.41 ± 3.15
[N II] 6585	40.50 ± 0.26	207 ± 97	86 ± 41	14.06 ± 1.18
[S II] 6718	40.52 ± 0.16	207 ± 97	86 ± 41	13.18 ± 0.74
[S II] 6732	40.51 ± 0.18	207 ± 97	86 ± 41	11.76 ± 0.74

Emission Summary

H α Broad SNR	21.92
H β Broad SNR	7.69
H γ Broad SNR	3.62
AGN frac	0.82
Host frac	0.17
$\log L_{5100, \text{Host}}$	42.66
Fe II/H β	0.41
Fe II/[O III]	0.38

Quality Flags

spurious_hab/hbb	0/0
15100	0
balmer	0
balmer_snr	0
hb_width	0
balmer_width	2