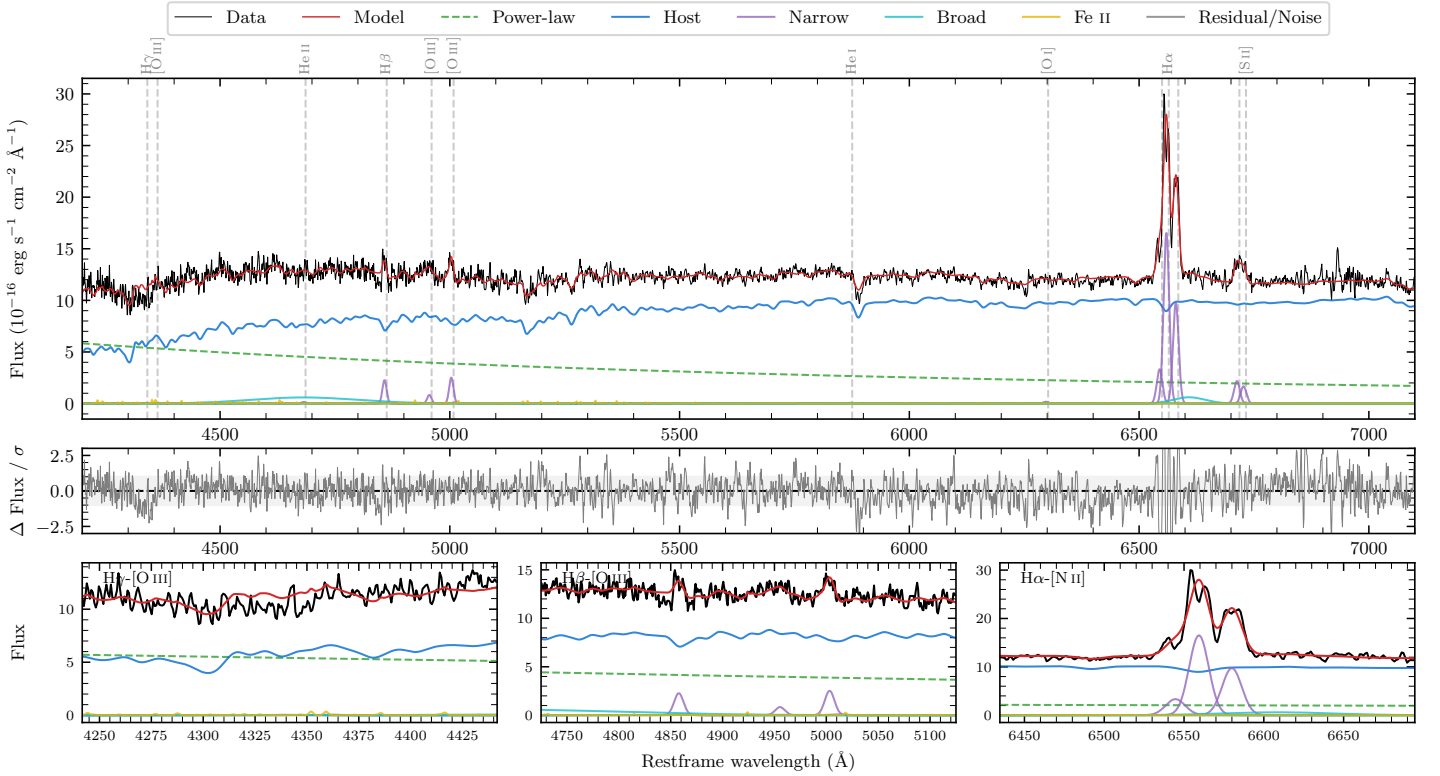
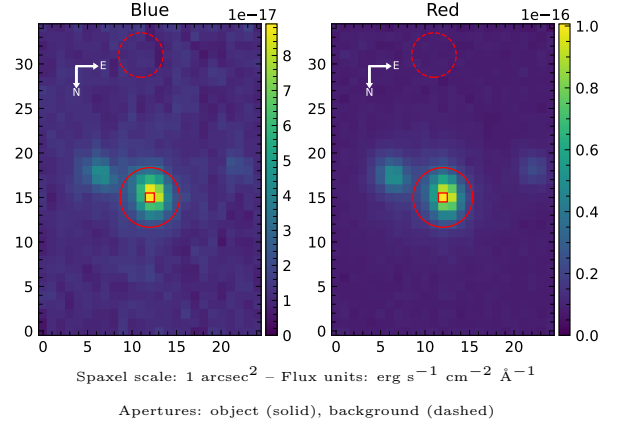


LEDA 3193050

Spectrum ID	2732781_sp1	Spectrum Type	Sy 2
Alt name	TGS603Z257	Quality Flag	good
z	0.0980	AGN reference	2dFGS
RA, Dec	354.1171, -35.8744	MW $E(B - V)$	0.014
MJD	60911.61	Power law α_ν	0.34 ± 0.06
SNR/Å B/R	16.3/26.0	$\log L_{5100, \text{AGN}}$	43.66 ± 0.02
Obs Airmass	1.02	$\log H\beta_{\text{Br}}/[\text{O III}]$	—
SMSS ID	2732781	$\log M_{L5100}/M_\odot$	—
Closest SMSS	1.41", 2004892935	$\log M_{\text{H}\alpha}/M_\odot$	—
SMSS Mean r_{psf}	15.7 ± 0.2	$\log M_{\text{H}\beta}/M_\odot$	—
2MASS K_{ext}	12.2 ± 0.1	$\log M_{[\text{O III}]} / M_\odot$	—



Emission Line Measurements

Line	$\log L$ (erg s ⁻¹)	FWHM (km s ⁻¹)	σ (km s ⁻¹)	EW (Å)
H γ Narrow	—	—	—	—
Hγ Broad	—	—	—	—
[O III] 4364	—	—	—	—
He II Narrow	—	—	—	—
He II Broad	41.67 ± 0.07	17661 ± 62	7500 ± 25	42.63 ± 3.39
H β Narrow	40.87 ± 0.07	669 ± 63	296 ± 29	7.20 ± 0.73
Hβ Broad	—	—	—	—
[O III] 5007	40.93 ± 0.05	669 ± 63	296 ± 29	8.81 ± 0.86
He I Narrow	—	—	—	—
He I Broad	—	—	—	—
[O I] 6300	39.84 ± 0.40	659 ± 62	280 ± 25	1.27 ± 0.76
H α Narrow	41.83 ± 0.01	659 ± 62	280 ± 25	135.39 ± 1.04
Hα Broad	—	—	—	—
[N II] 6585	41.60 ± 0.01	659 ± 62	280 ± 25	80.75 ± 1.13
[S II] 6718	40.96 ± 0.04	659 ± 62	280 ± 25	19.31 ± 1.08
[S II] 6732	40.85 ± 0.05	659 ± 62	280 ± 25	14.96 ± 1.07

Emission Summary

H α Broad SNR	0.85
H β Broad SNR	0.00
H γ Broad SNR	0.00
AGN frac	0.31
Host frac	0.69
$\log L_{5100, \text{Host}}$	44.00
Fe II/H β	—
Fe II/[O III]	—

Quality Flags

spurious_hab/hbb	0/0
15100	1
balmer	2
balmer_snr	2
hb_width	2
balmer_width	2