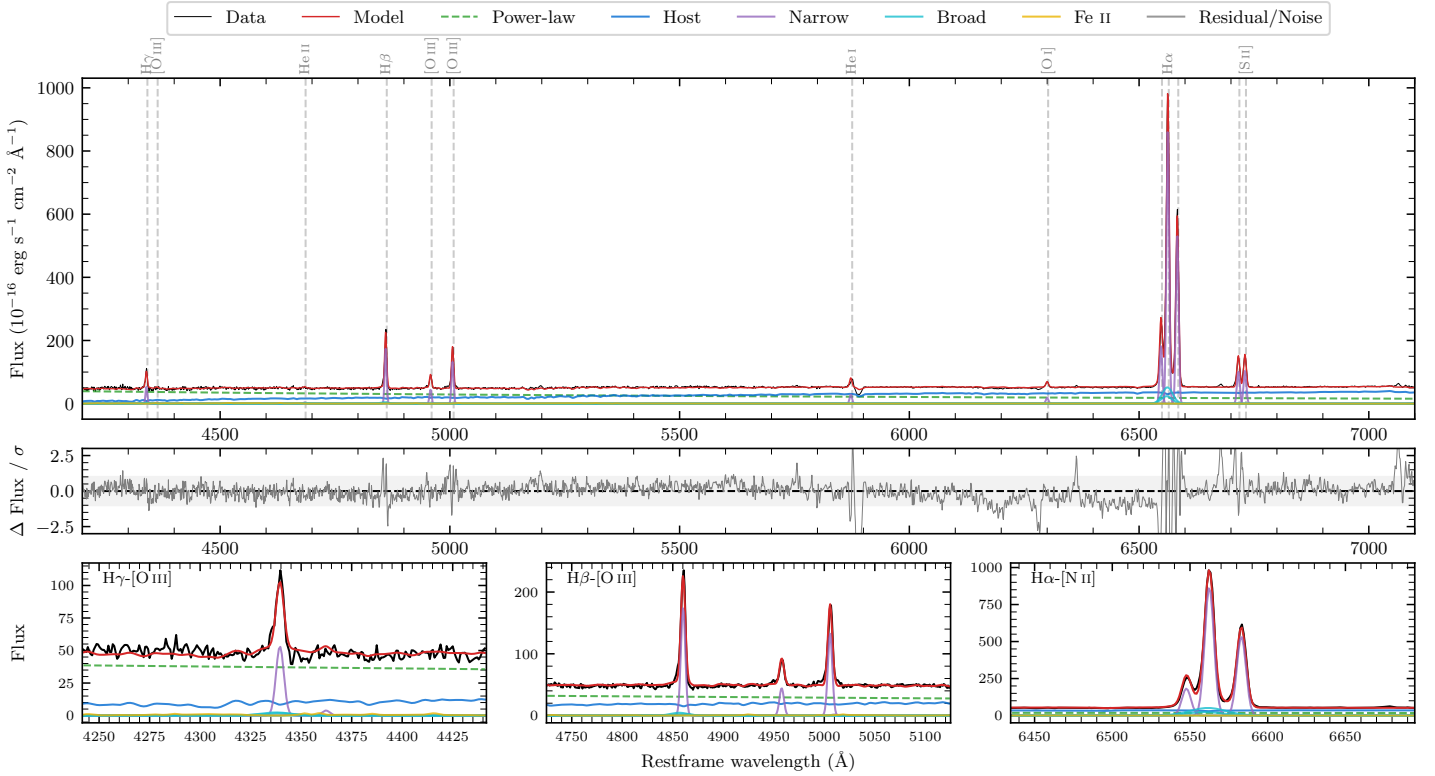
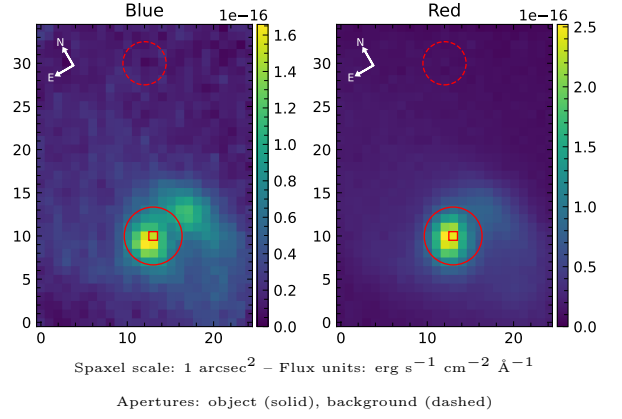


NGC 1614

Spectrum ID	24470028_sp1	Spectrum Type	Sy 2
Alt name	NGC 1614	Quality Flag	good
z	0.0163	AGN reference	M+1993
RA, Dec	68.5001, -8.5792	MW $E(B - V)$	0.132
MJD	60940.76	Power law α_ν	-0.24 ± 0.19
SNR/ \AA B/R	8.4/17.3	$\log L_{5100, \text{AGN}}$	42.91 ± 0.03
Obs Airmass	1.09	$\log H\beta_{\text{Br}}/[\text{O III}]$	—
SMSS ID	24470028	$\log M_{L5100}/M_\odot$	—
Closest SMSS	5.07", 24470027	$\log M_{\text{H}\alpha}/M_\odot$	—
SMSS Mean r_{psf}	13.4 ± 0.2	$\log M_{\text{H}\beta}/M_\odot$	—
2MASS K_{ext}	9.5 ± 0.0	$\log M_{[\text{O III}]} / M_\odot$	—



Emission Line Measurements

Line	$\log L$ (erg s $^{-1}$)	FWHM (km s $^{-1}$)	σ (km s $^{-1}$)	EW (Angstrom)
H γ Narrow	40.19 ± 0.06	320 ± 63	138 ± 25	7.19 ± 0.52
Hγ Broad	—	—	—	—
[O III] 4364	39.05 ± 0.42	319 ± 62	134 ± 25	0.53 ± 0.43
He II Narrow	39.06 ± 0.38	319 ± 62	134 ± 25	0.61 ± 0.38
He II Broad	39.28 ± 0.43	1184 ± 63	502 ± 25	1.00 ± 0.73
H β Narrow	40.76 ± 0.02	320 ± 63	138 ± 25	32.24 ± 0.54
Hβ Broad	39.98 ± 0.15	1243 ± 38	458 ± 25	4.68 ± 0.84
[O III] 5007	40.65 ± 0.01	320 ± 63	138 ± 25	26.56 ± 0.51
He I Narrow	40.04 ± 0.04	319 ± 62	134 ± 25	8.80 ± 0.49
He I Broad	—	—	—	—
[O I] 6300	39.88 ± 0.05	319 ± 62	134 ± 25	6.82 ± 0.46
H α Narrow	41.64 ± 0.01	319 ± 62	134 ± 25	360.48 ± 0.97
Hα Broad	—	—	—	—
[N II] 6585	41.44 ± 0.01	319 ± 62	134 ± 25	224.21 ± 0.77
[S II] 6718	40.65 ± 0.01	319 ± 62	134 ± 25	44.95 ± 0.57
[S II] 6732	40.66 ± 0.01	319 ± 62	134 ± 25	46.48 ± 0.58

Emission Summary

H α Broad SNR	0.00
H β Broad SNR	0.00
H γ Broad SNR	0.00
AGN frac	0.59
Host frac	0.41
$\log L_{5100, \text{Host}}$	42.76
Fe II/H β	—
Fe II/[O III]	0.41

Quality Flags

spurious_hab/hbb	1/0
15100	0
balmer	2
balmer_snr	2
hb_width	0
balmer_width	2