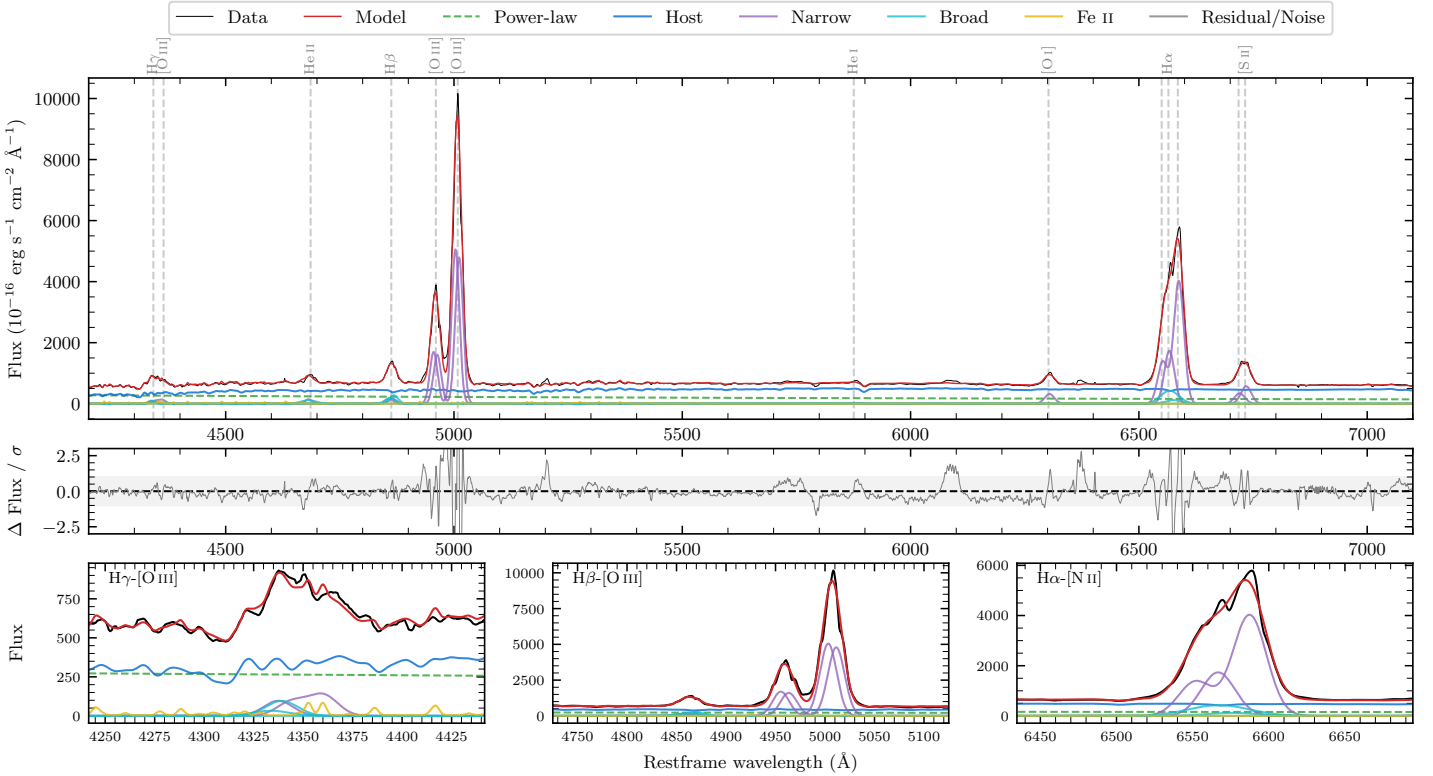
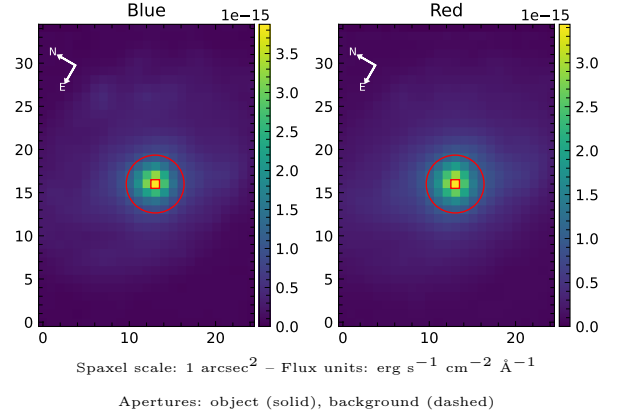


M 77

Spectrum ID	15617931_sp1	Spectrum Type	SF
Alt name	NGC 1068	Quality Flag	good
z	0.0036	AGN reference	S+1994
RA, Dec	40.6696, -0.0133	MW $E(B - V)$	0.029
MJD	60915.78	Power law α_ν	-0.75 ± 0.45
SNR/ \AA B/R	8.8/13.0	$\log L_{5100, \text{AGN}}$	42.34 ± 0.09
Obs Airmass	1.18	$\log H\beta_{\text{Br}}/[\text{O III}]$	—
SMSS ID	15617931	$\log M_{L5100}/M_\odot$	—
Closest SMSS	5.76", 2027963543	$\log M_{\text{H}\alpha}/M_\odot$	—
SMSS Mean r_{psf}	10.2 ± 0.3	$\log M_{\text{H}\beta}/M_\odot$	—
2MASS K_{ext}	5.8 ± 0.0	$\log M_{[\text{O III}]} / M_\odot$	—



Emission Line Measurements

Line	$\log L$ (erg s $^{-1}$)	FWHM (km s $^{-1}$)	σ (km s $^{-1}$)	EW (\AA)
H γ Narrow	39.84 ± 0.25	1335 ± 63	558 ± 26	13.20 ± 1.58
Hγ Broad	39.80 ± 0.26	1411 ± 126	524 ± 42	10.23 ± 1.64
[O III] 4364	39.69 ± 0.13	1189 ± 73	505 ± 30	9.34 ± 1.53
He II Narrow	39.76 ± 0.19	1189 ± 73	505 ± 30	12.04 ± 1.42
He II Broad	39.99 ± 0.15	2486 ± 98	1056 ± 41	20.20 ± 2.00
H β Narrow	40.14 ± 0.23	1335 ± 63	558 ± 26	30.29 ± 1.67
Hβ Broad	40.37 ± 0.15	1524 ± 92	582 ± 34	49.69 ± 1.80
[O III] 5007	41.61 ± 0.01	1335 ± 63	559 ± 26	946.54 ± 2.23
He I Narrow	39.10 ± 0.37	1189 ± 73	505 ± 30	3.54 ± 1.60
He I Broad	39.11 ± 0.38	1353 ± 113	574 ± 47	3.49 ± 1.67
[O I] 6300	40.23 ± 0.02	1189 ± 73	505 ± 30	51.58 ± 1.55
H α Narrow	41.04 ± 0.07	1189 ± 73	505 ± 30	306.07 ± 3.25
Hα Broad	—	—	—	—
[N II] 6585	41.40 ± 0.05	1189 ± 73	505 ± 30	714.90 ± 3.25
[S II] 6718	40.28 ± 0.04	1189 ± 73	505 ± 30	63.57 ± 1.86
[S II] 6732	40.51 ± 0.03	1189 ± 73	505 ± 30	107.36 ± 1.88

Emission Summary

H α Broad SNR	0.00
H β Broad SNR	0.00
H γ Broad SNR	0.00
AGN frac	0.33
Host frac	0.67
$\log L_{5100, \text{Host}}$	42.65
Fe II/H β	—
Fe II/[O III]	0.03

Quality Flags

spurious_hab/hbb	1/0
15100	1
balmer	2
balmer_snr	2
hb_width	0
balmer_width	2