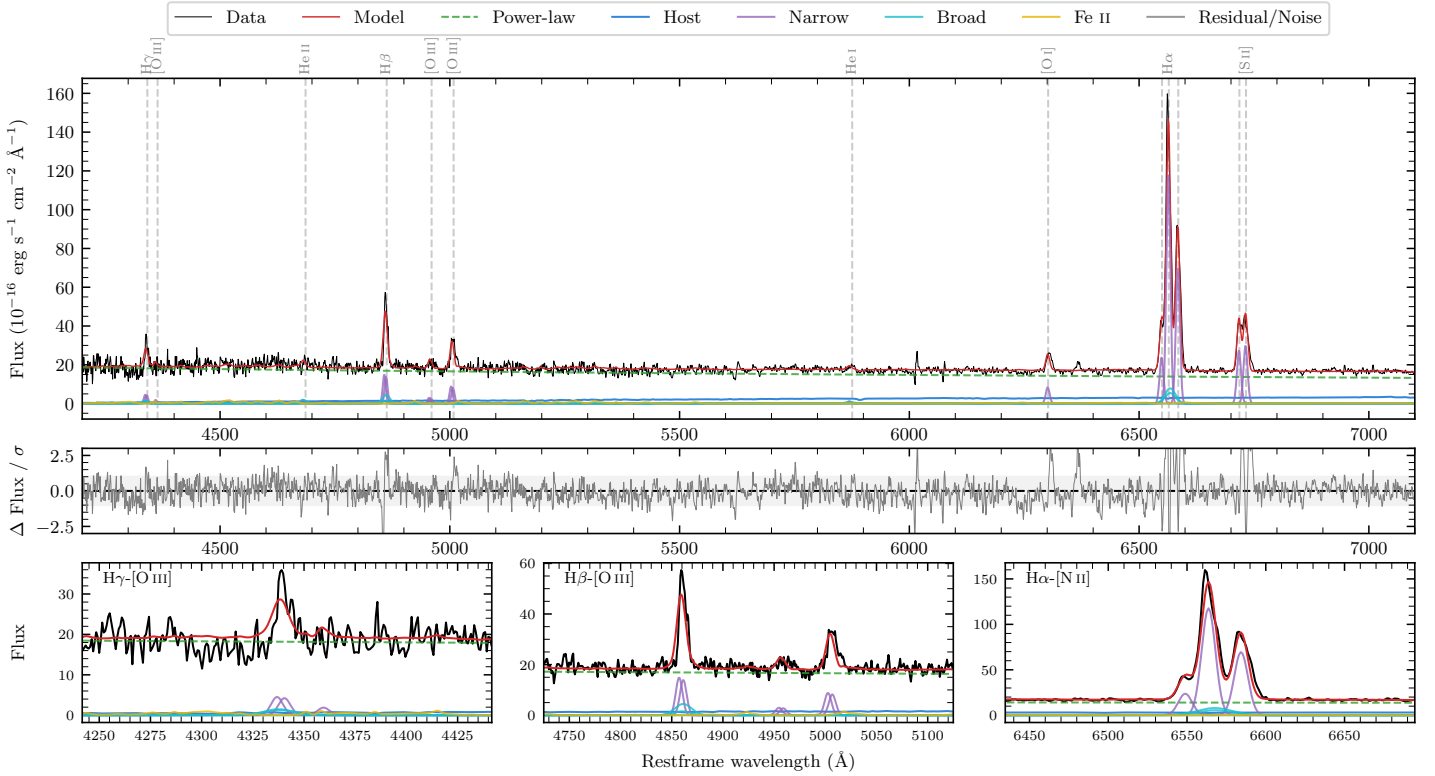
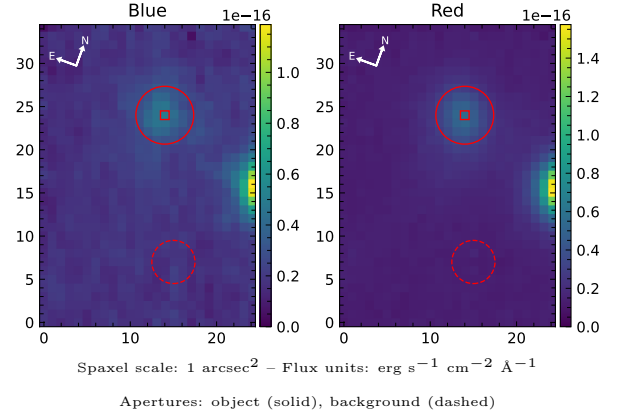


LEDA 90210

Spectrum ID	114036187_sp1	Spectrum Type	Sy 2
Alt name	IRAS 15238-3058	Quality Flag	good
z	0.0477	AGN reference	PGC
RA, Dec	231.7229, -31.1439	MW $E(B - V)$	0.305
MJD	60904.38	Power law α_ν	-1.36 ± 0.28
SNR/Å B/R	6.1/10.7	$\log L_{5100, \text{AGN}}$	43.66 ± 0.03
Obs Airmass	1.04	$\log H\beta_{\text{Br}}/[\text{O III}]$	—
SMSS ID	114036187	$\log M_{L5100}/M_\odot$	—
Closest SMSS	14.58", 114036185	$\log M_{\text{H}\alpha}/M_\odot$	—
SMSS Mean r_{psf}	15.7 ± 0.1	$\log M_{\text{H}\beta}/M_\odot$	—
2MASS K_{ext}	11.1 ± 0.1	$\log M_{[\text{O III}]} / M_\odot$	—



Emission Line Measurements

Line	$\log L$ (erg s $^{-1}$)	FWHM (km s $^{-1}$)	σ (km s $^{-1}$)	EW (Å)
H γ Narrow	40.58 ± 0.19	586 ± 67	236 ± 27	3.67 ± 0.59
Hγ Broad	40.59 ± 0.27	1181 ± 63	449 ± 25	2.88 ± 1.04
[O III] 4364	39.91 ± 0.36	472 ± 67	200 ± 27	0.80 ± 0.57
He II Narrow	39.95 ± 0.42	472 ± 67	200 ± 27	0.92 ± 0.49
He II Broad	40.36 ± 0.29	1192 ± 81	506 ± 33	2.32 ± 0.78
H β Narrow	41.14 ± 0.06	586 ± 67	236 ± 27	14.54 ± 0.54
Hβ Broad	40.90 ± 0.15	1181 ± 25	460 ± 25	7.62 ± 0.80
[O III] 5007	40.93 ± 0.05	586 ± 67	236 ± 27	9.03 ± 0.52
He I Narrow	39.86 ± 0.33	472 ± 67	200 ± 27	0.86 ± 0.34
He I Broad	40.03 ± 0.35	1178 ± 62	500 ± 25	1.32 ± 0.53
[O I] 6300	40.72 ± 0.05	472 ± 67	200 ± 27	6.48 ± 0.36
H α Narrow	41.96 ± 0.04	472 ± 67	200 ± 27	97.19 ± 0.63
Hα Broad	—	—	—	—
[N II] 6585	41.73 ± 0.04	472 ± 67	200 ± 27	57.71 ± 0.57
[S II] 6718	41.25 ± 0.01	472 ± 67	200 ± 27	23.40 ± 0.44
[S II] 6732	41.29 ± 0.02	472 ± 67	200 ± 27	25.62 ± 0.44

Emission Summary

H α Broad SNR	0.00
H β Broad SNR	0.00
H γ Broad SNR	0.00
AGN frac	0.92
Host frac	0.08
$\log L_{5100, \text{Host}}$	42.61
Fe II/H β	—
Fe II/[O III]	1.50

Quality Flags

spurious_hab/hbb	1/0
15100	0
balmer	2
balmer_snr	2
hb_width	0
balmer_width	2