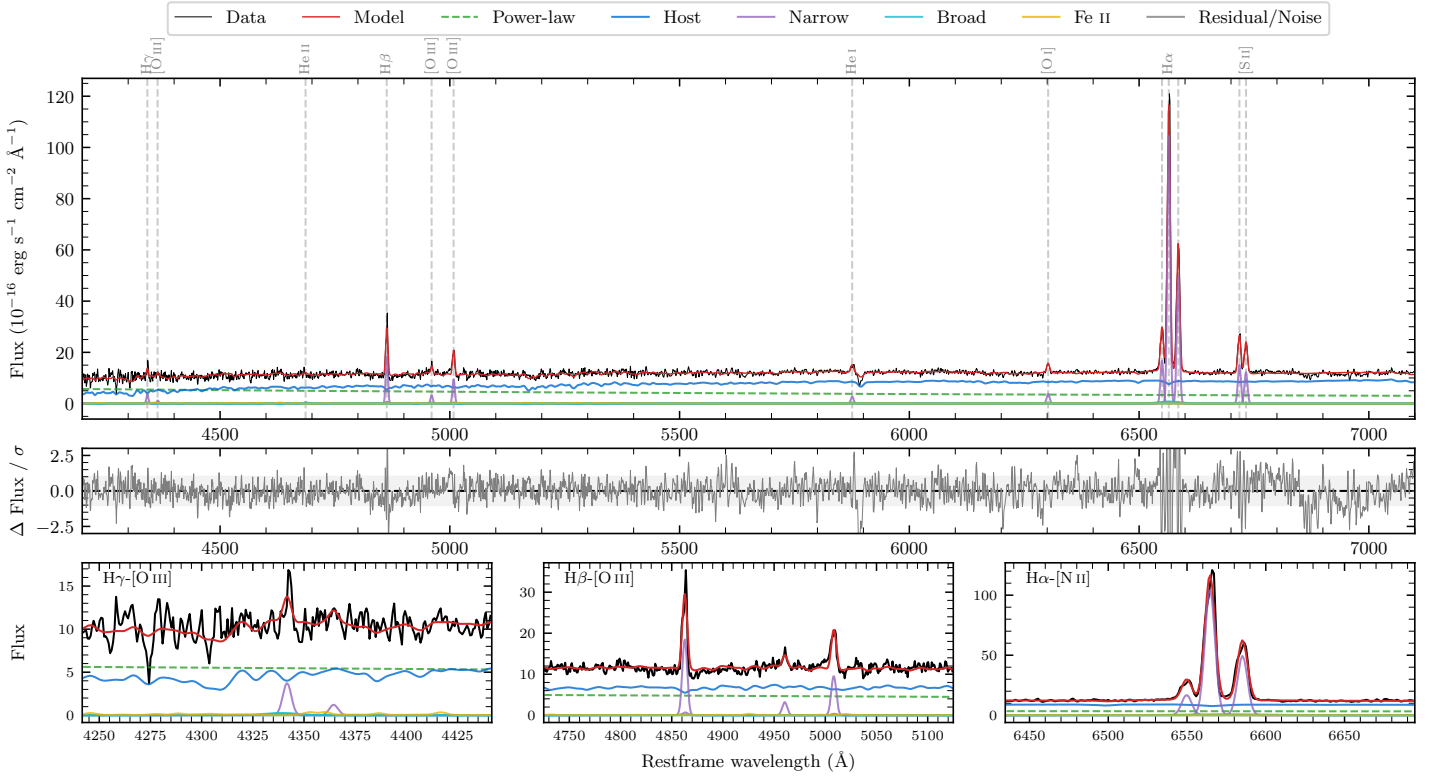
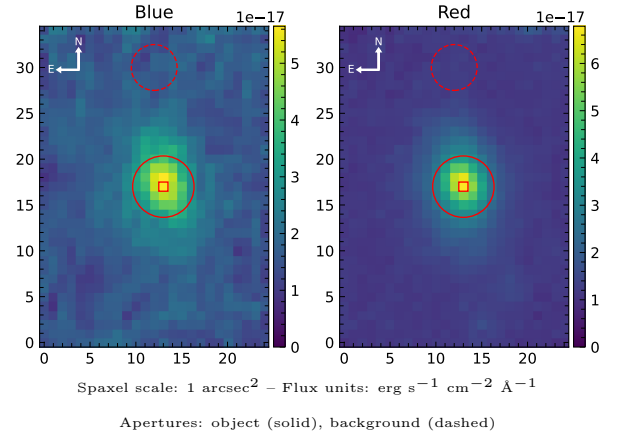


# LEDA 88903

Spectrum ID	98608298_sp1	Spectrum Type	Sy 2
Alt name	IRAS 13317-3312	Quality Flag	good
$z$	0.0460	AGN reference	PGC
RA, Dec	203.6634, -33.4579	MW $E(B - V)$	0.049
MJD	61063.74	Power law $\alpha_\nu$	$-0.80 \pm 0.17$
SNR/Å B/R	7.9/16.4	$\log L_{5100, \text{AGN}}$	$43.06 \pm 0.03$
Obs Airmass	1.08	$\log H\beta_{\text{Br}}/[\text{O III}]$	—
SMSS ID	98608298	$\log M_{L5100}/M_\odot$	—
Closest SMSS	5.15", 2160868100	$\log M_{\text{H}\alpha}/M_\odot$	—
SMSS Mean $r_{\text{psf}}$	$14.9 \pm 0.1$	$\log M_{\text{H}\beta}/M_\odot$	—
2MASS $K_{\text{ext}}$	$11.3 \pm 0.0$	$\log M_{[\text{O III}]} / M_\odot$	—



## Emission Line Measurements

Line	$\log L$ (erg s $^{-1}$ )	FWHM (km s $^{-1}$ )	$\sigma$ (km s $^{-1}$ )	EW (Å)
H $\gamma$ Narrow	$40.05 \pm 0.16$	$345 \pm 62$	$145 \pm 25$	$3.90 \pm 0.73$
<b>H<math>\gamma</math> Broad</b>	—	—	—	—
[O III] 4364	$39.52 \pm 0.37$	$342 \pm 62$	$144 \pm 25$	$1.24 \pm 0.71$
He II Narrow	—	—	—	—
He II Broad	$39.57 \pm 0.46$	$1189 \pm 62$	$505 \pm 25$	$1.50 \pm 1.22$
H $\beta$ Narrow	$40.78 \pm 0.03$	$345 \pm 62$	$145 \pm 25$	$24.92 \pm 0.74$
<b>H<math>\beta</math> Broad</b>	—	—	—	—
[O III] 5007	$40.51 \pm 0.04$	$345 \pm 62$	$145 \pm 25$	$13.76 \pm 0.69$
He I Narrow	$40.01 \pm 0.08$	$342 \pm 62$	$144 \pm 25$	$5.41 \pm 0.54$
He I Broad	—	—	—	—
[O I] 6300	$40.18 \pm 0.05$	$342 \pm 62$	$144 \pm 25$	$8.77 \pm 0.57$
H $\alpha$ Narrow	$41.66 \pm 0.01$	$342 \pm 62$	$144 \pm 25$	$261.37 \pm 0.98$
<b>H<math>\alpha</math> Broad</b>	—	—	—	—
[N II] 6585	$41.33 \pm 0.01$	$342 \pm 62$	$144 \pm 25$	$124.05 \pm 0.86$
[S II] 6718	$40.81 \pm 0.01$	$342 \pm 62$	$144 \pm 25$	$39.79 \pm 0.69$
[S II] 6732	$40.71 \pm 0.02$	$342 \pm 62$	$144 \pm 25$	$32.23 \pm 0.68$

## Emission Summary

H $\alpha$ Broad SNR	0.00
H $\beta$ Broad SNR	0.00
H $\gamma$ Broad SNR	0.00
AGN frac	0.40
Host frac	0.60
$\log L_{5100, \text{Host}}$	43.23
Fe II/H $\beta$	—
Fe II/[O III]	0.74

## Quality Flags

spurious_hab/hbb	1/0
15100	1
balmer	2
balmer_snr	2
hb_width	2
balmer_width	2