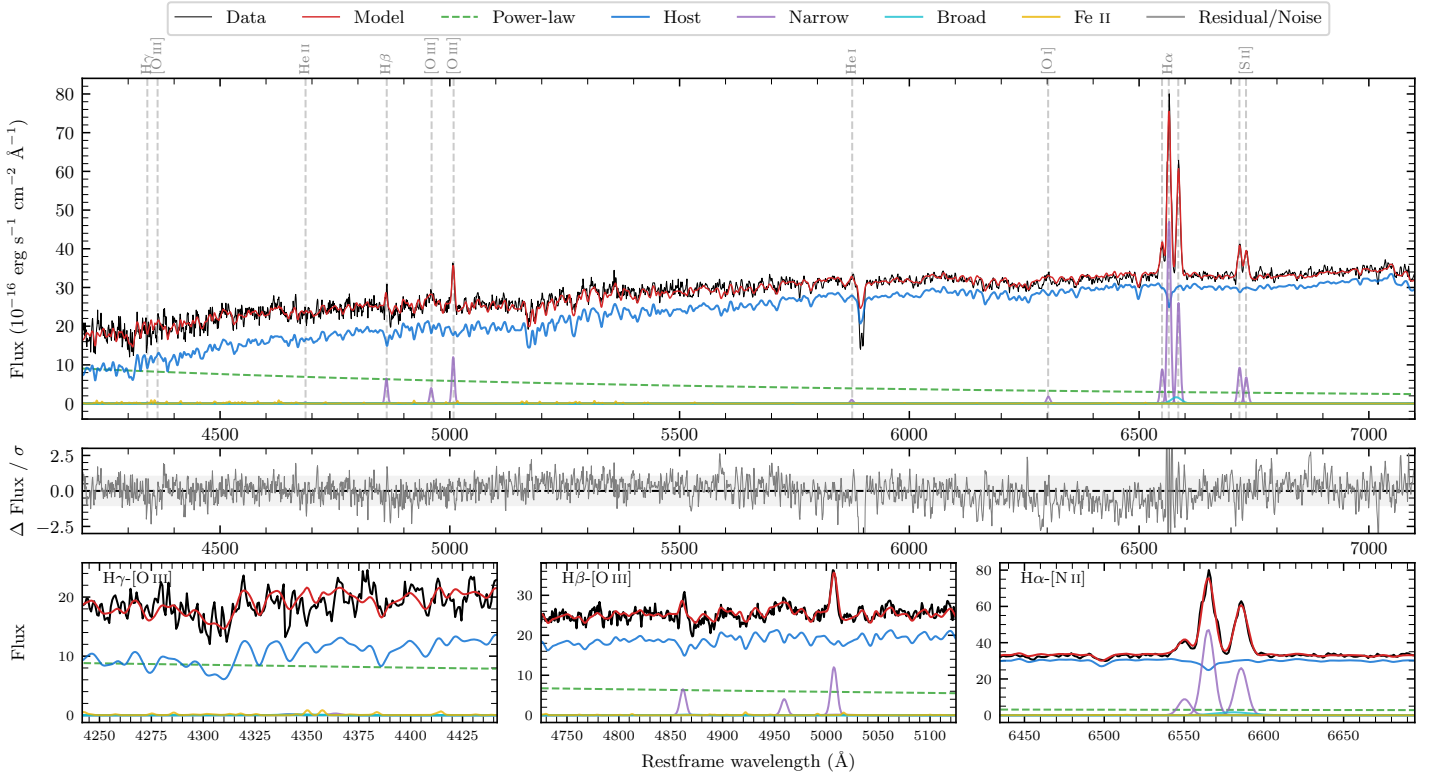
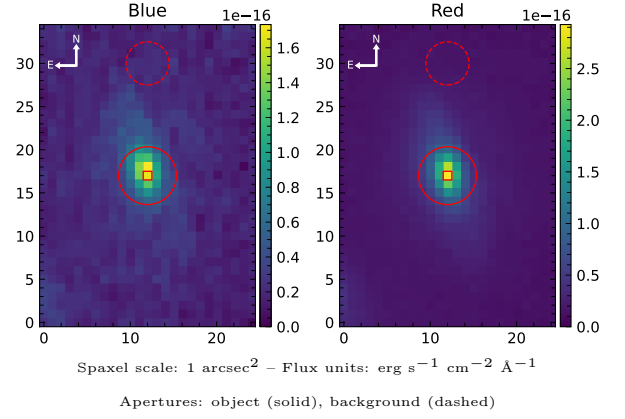


IC 1464B

Spectrum ID	7248405_sp1	Spectrum Type	Sy 2
Alt name	IC 1464B	Quality Flag	good
z	0.0238	AGN reference	PGC
RA, Dec	345.7960, -8.9891	MW $E(B - V)$	0.032
MJD	60931.56	Power law α_ν	0.49 ± 0.01
SNR/ \AA B/R	13.1/32.2	$\log L_{5100, \text{AGN}}$	42.57 ± 0.01
Obs Airmass	1.08	$\log H\beta_{\text{Br}}/[\text{O III}]$	—
SMSS ID	7248405	$\log M_{L5100}/M_\odot$	—
Closest SMSS	None $< 15''$	$\log M_{\text{H}\alpha}/M_\odot$	—
SMSS Mean r_{psf}	13.9 ± 0.1	$\log M_{\text{H}\beta}/M_\odot$	—
2MASS K_{ext}	10.0 ± 0.0	$\log M_{[\text{O III}]} / M_\odot$	—



Emission Line Measurements

Line	$\log L$ (erg s $^{-1}$)	FWHM (km s $^{-1}$)	σ (km s $^{-1}$)	EW (A)
H γ Narrow	—	—	—	—
Hγ Broad	—	—	—	—
[O III] 4364	—	—	—	—
He II Narrow	—	—	—	—
He II Broad	—	—	—	—
H β Narrow	39.82 ± 0.08	418 ± 63	213 ± 40	7.94 ± 1.24
Hβ Broad	—	—	—	—
[O III] 5007	40.10 ± 0.04	418 ± 63	213 ± 40	16.23 ± 1.33
He I Narrow	39.05 ± 0.25	414 ± 62	176 ± 25	2.21 ± 0.71
He I Broad	—	—	—	—
[O I] 6300	39.35 ± 0.13	414 ± 62	176 ± 25	5.20 ± 0.92
H α Narrow	40.79 ± 0.01	414 ± 62	176 ± 25	157.01 ± 1.18
Hα Broad	—	—	—	—
[N II] 6585	40.53 ± 0.01	414 ± 62	176 ± 25	87.37 ± 1.17
[S II] 6718	40.09 ± 0.03	414 ± 62	176 ± 25	33.65 ± 1.31
[S II] 6732	39.96 ± 0.04	414 ± 62	176 ± 25	24.65 ± 1.25

Emission Summary

H α Broad SNR	0.89
H β Broad SNR	0.00
H γ Broad SNR	0.00
AGN frac	0.23
Host frac	0.77
$\log L_{5100, \text{Host}}$	43.10
Fe II/H β	—
Fe II/[O III]	—

Quality Flags

spurious_hab/hbb	0/0
15100	2
balmer	2
balmer_snr	2
hb_width	2
balmer_width	2