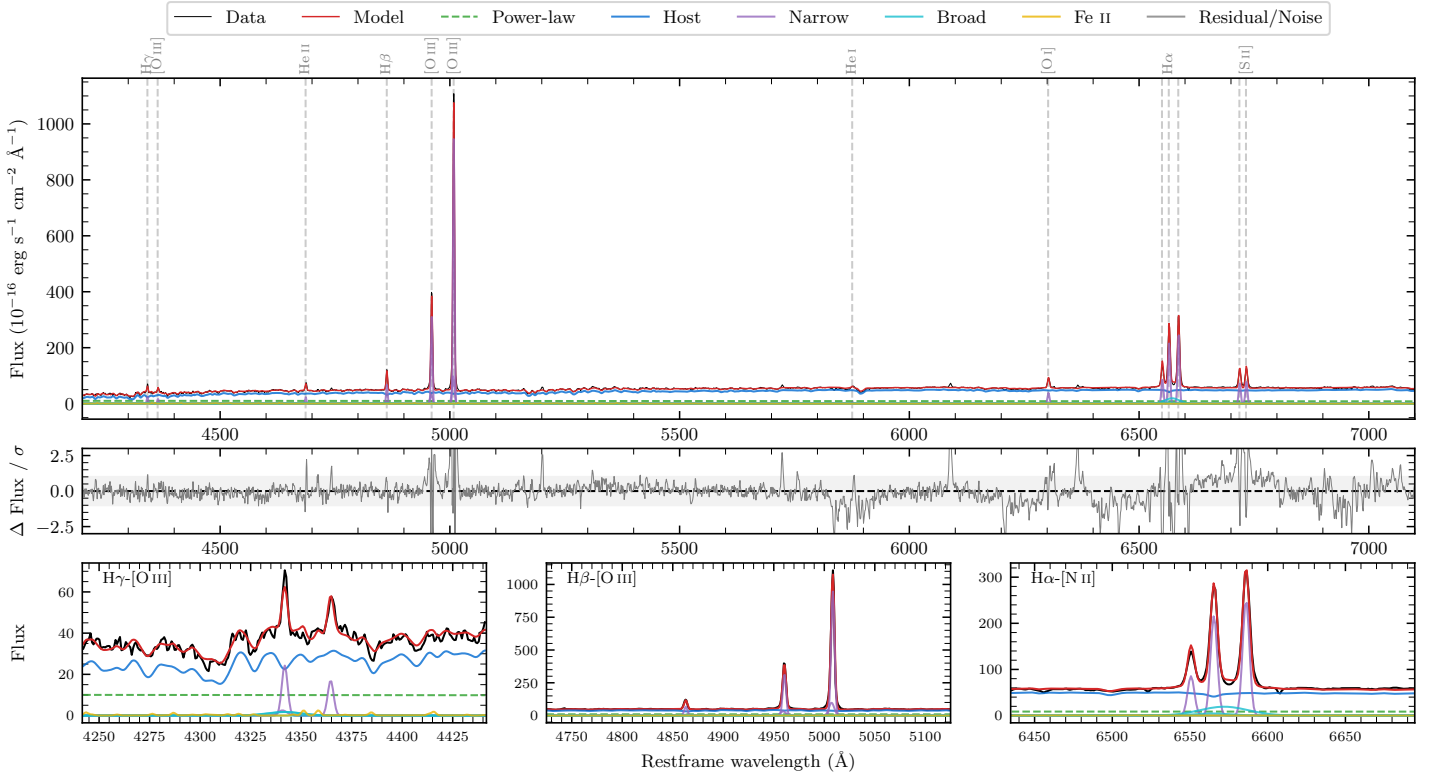
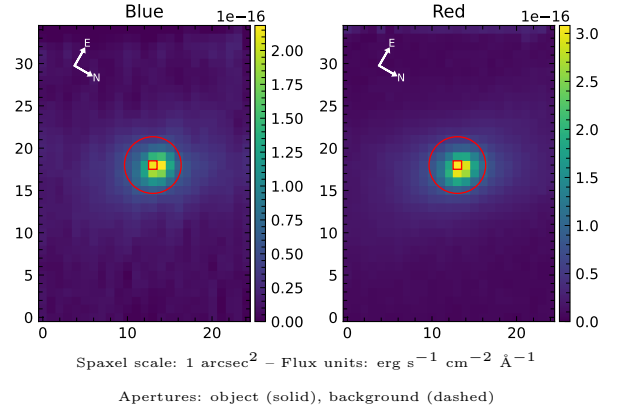


# IC 2560

Spectrum ID	85178673_sp1	Spectrum Type	SF
Alt name	IC2560	Quality Flag	good
$z$	0.0097	AGN reference	S7
RA, Dec	154.0779, -33.5639	MW $E(B - V)$	0.082
MJD	61124.69	Power law $\alpha_\nu$	$-1.64 \pm 0.33$
SNR/Å B/R	11.2/22.7	$\log L_{5100, \text{AGN}}$	$42.00 \pm 0.13$
Obs Airmass	1.78	$\log H\beta_{\text{Br}}/[\text{O III}]$	—
SMSS ID	85178673	$\log M_{L5100}/M_\odot$	—
Closest SMSS	None $< 15''$	$\log M_{\text{H}\alpha}/M_\odot$	—
SMSS Mean $r_{\text{psf}}$	$13.7 \pm 0.2$	$\log M_{\text{H}\beta}/M_\odot$	—
2MASS $K_{\text{ext}}$	$8.7 \pm 0.0$	$\log M_{[\text{O III}]} / M_\odot$	—



## Emission Line Measurements

Line	$\log L$ (erg s <sup>-1</sup> )	FWHM (km s <sup>-1</sup> )	$\sigma$ (km s <sup>-1</sup> )	EW (Å)
H $\gamma$ Narrow	$39.36 \pm 0.10$	$246 \pm 63$	$115 \pm 28$	$10.28 \pm 1.26$
<b>H<math>\gamma</math> Broad</b>	—	—	—	—
[O III] 4364	$39.12 \pm 0.13$	$238 \pm 62$	$99 \pm 25$	$6.28 \pm 1.05$
He II Narrow	$39.28 \pm 0.08$	$238 \pm 62$	$99 \pm 25$	$9.44 \pm 0.84$
He II Broad	$39.15 \pm 0.26$	$1276 \pm 115$	$542 \pm 48$	$6.45 \pm 1.80$
H $\beta$ Narrow	$39.84 \pm 0.03$	$246 \pm 63$	$115 \pm 28$	$33.49 \pm 1.00$
<b>H<math>\beta</math> Broad</b>	—	—	—	—
[O III] 5007	$40.99 \pm 0.01$	$246 \pm 63$	$115 \pm 28$	$487.74 \pm 1.71$
He I Narrow	$38.70 \pm 0.18$	$238 \pm 62$	$99 \pm 25$	$2.70 \pm 0.64$
He I Broad	—	—	—	—
[O I] 6300	$39.63 \pm 0.03$	$238 \pm 62$	$99 \pm 25$	$23.47 \pm 0.69$
H $\alpha$ Narrow	$40.51 \pm 0.01$	$238 \pm 62$	$99 \pm 25$	$138.39 \pm 0.88$
<b>H<math>\alpha</math> Broad</b>	—	—	—	—
[N II] 6585	$40.57 \pm 0.01$	$238 \pm 62$	$99 \pm 25$	$161.01 \pm 0.92$
[S II] 6718	$39.94 \pm 0.01$	$238 \pm 62$	$99 \pm 25$	$48.44 \pm 0.71$
[S II] 6732	$39.96 \pm 0.01$	$238 \pm 62$	$99 \pm 25$	$51.41 \pm 0.73$

## Emission Summary

H $\alpha$ Broad SNR	0.00
H $\beta$ Broad SNR	0.00
H $\gamma$ Broad SNR	0.00
AGN frac	0.20
Host frac	0.80
$\log L_{5100, \text{Host}}$	42.60
Fe II/H $\beta$	—
Fe II/[O III]	0.03

## Quality Flags

spurious_hab/hbb	1/0
15100	1
balmer	2
balmer_snr	2
hb_width	2
balmer_width	2