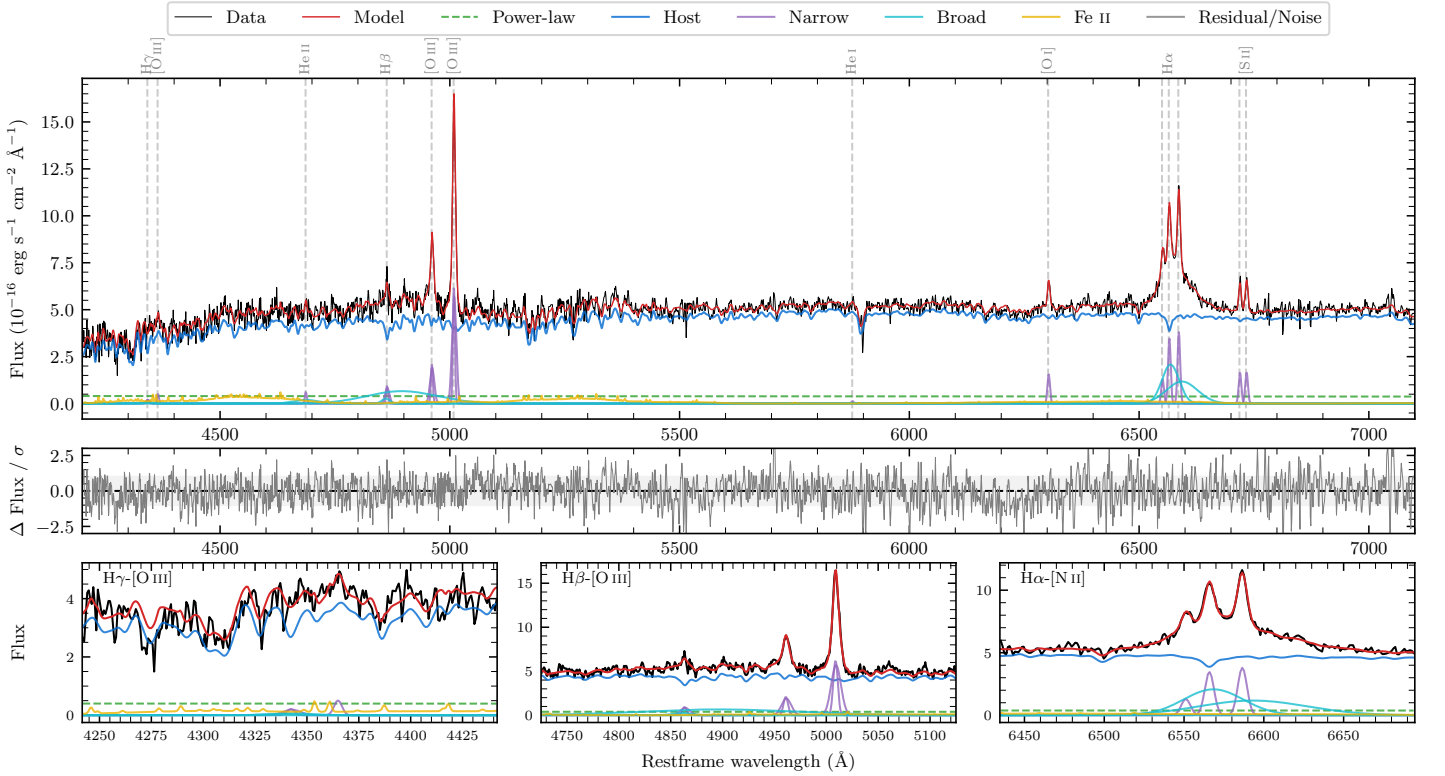
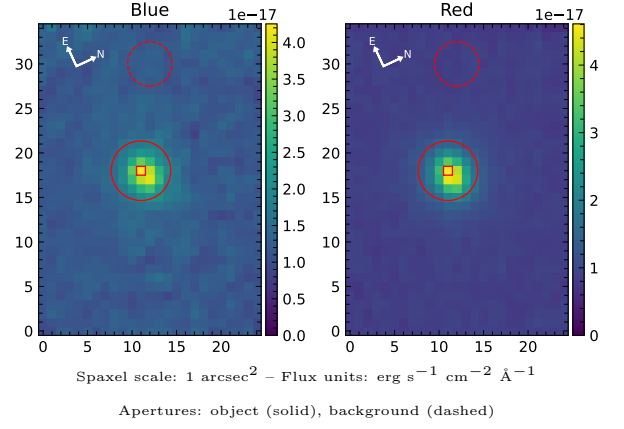


LEDA 126593

Spectrum ID	490068060_sp1	Spectrum Type	Sy 1.5
Alt name	g2249044-445233	Quality Flag	good
z	0.0687	AGN reference	6dFGS
RA, Dec	342.2682, -44.8756	MW $E(B - V)$	0.009
MJD	60176.57	Power law α_ν	-1.86 ± 0.18
SNR/Å B/R	12.8/24.9	$\log L_{5100, \text{AGN}}$	42.36 ± 0.12
Obs Airmass	1.07	$\log H\beta_{\text{Br}} / [\text{O III}]$	0.12 ± 0.03
SMSS ID	490068060	$\log M_{L5100} / M_\odot$	8.08 ± 0.18
Closest SMSS	None $< 15''$	$\log M_{\text{H}\alpha} / M_\odot$	6.95 ± 0.04
SMSS Mean r_{psf}	16.5 ± 0.1	$\log M_{\text{H}\beta} / M_\odot$	8.35 ± 0.17
2MASS K_{ext}	12.8 ± 0.1	$\log M_{[\text{O III}]} / M_\odot$	8.43 ± 0.17



Emission Line Measurements

Line	$\log L$ (erg s $^{-1}$)	FWHM (km s $^{-1}$)	σ (km s $^{-1}$)	EW (Å)
H γ Narrow	39.56 ± 0.30	432 ± 63	243 ± 26	8.01 ± 3.44
Hγ Broad	—	—	—	—
[O III] 4364	39.47 ± 0.25	309 ± 63	131 ± 25	6.50 ± 2.39
He II Narrow	39.58 ± 0.20	309 ± 63	131 ± 25	8.47 ± 2.18
He II Broad	40.21 ± 0.18	4008 ± 64	1702 ± 26	35.57 ± 8.03
H β Narrow	40.25 ± 0.08	432 ± 63	243 ± 26	39.74 ± 3.24
Hβ Broad	41.21 ± 0.03	8663 ± 1800	3890 ± 53	360.73 ± 14.23
[O III] 5007	41.09 ± 0.01	432 ± 63	243 ± 26	276.40 ± 3.65
He I Narrow	39.01 ± 0.38	309 ± 63	131 ± 25	2.34 ± 1.41
He I Broad	—	—	—	—
[O I] 6300	40.12 ± 0.03	309 ± 63	131 ± 25	30.33 ± 1.41
H α Narrow	40.48 ± 0.02	309 ± 63	131 ± 25	70.50 ± 1.62
Hα Broad	41.38 ± 0.01	2576 ± 85	1038 ± 25	557.79 ± 5.38
[N II] 6585	40.53 ± 0.02	309 ± 63	131 ± 25	77.60 ± 1.65
[S II] 6718	40.17 ± 0.03	309 ± 63	131 ± 25	34.43 ± 1.56
[S II] 6732	40.18 ± 0.03	309 ± 63	131 ± 25	34.80 ± 1.57

Emission Summary

H α Broad SNR	8.22
H β Broad SNR	2.39
H γ Broad SNR	0.38
AGN frac	0.09
Host frac	0.91
$\log L_{5100, \text{Host}}$	43.38
Fe II/H β	0.65
Fe II/[O III]	0.85

Quality Flags

spurious_hab/hbb	0/0
15100	2
balmer	1
balmer_snr	2
hb_width	0
balmer_width	1