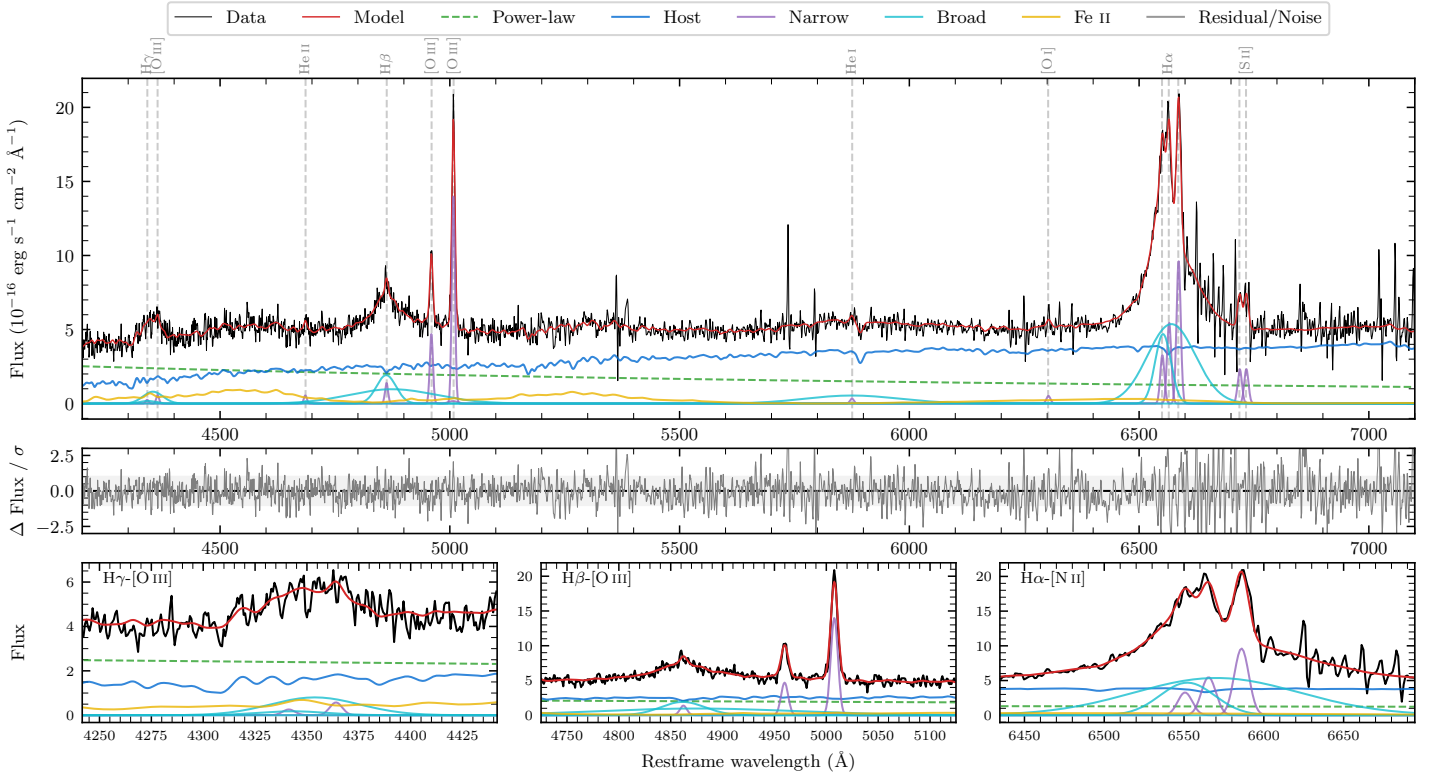
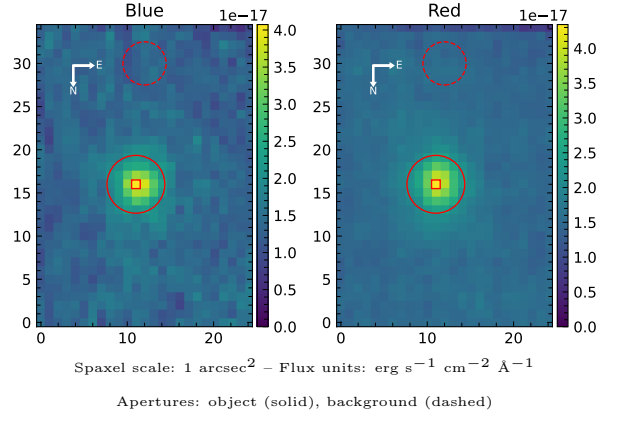


LEDA 596567

Spectrum ID	1705936_sp1	Spectrum Type	Sy 1.2
Alt name	g2245238-393441	Quality Flag	good
z	0.0984	AGN reference	6dFGS
RA, Dec	341.3493, -39.5779	MW $E(B - V)$	0.011
MJD	60114.79	Power law α_ν	-0.46 ± 0.41
SNR/ \AA B/R	8.9/12.1	$\log L_{5100, \text{AGN}}$	43.37 ± 0.06
Obs Airmass	1.01	$\log H\beta_{\text{Br}}/[\text{O III}]$	0.42 ± 0.03
SMSS ID	1705936	$\log M_{L5100}/M_\odot$	7.88 ± 0.06
Closest SMSS	None $< 15''$	$\log M_{\text{H}\alpha}/M_\odot$	7.79 ± 0.03
SMSS Mean r_{psf}	16.5 ± 0.0	$\log M_{\text{H}\beta}/M_\odot$	8.06 ± 0.06
2MASS K_{ext}	12.8 ± 0.1	$\log M_{[\text{O III}]} / M_\odot$	8.02 ± 0.06



Emission Line Measurements

Line	$\log L$ (erg s $^{-1}$)	FWHM (km s $^{-1}$)	σ (km s $^{-1}$)	EW (Angstrom)
H γ Narrow	—	—	—	—
Hγ Broad	41.15 ± 0.08	3425 ± 142	1233 ± 44	23.38 ± 2.12
[O III] 4364	40.07 ± 0.28	489 ± 63	207 ± 25	2.01 ± 0.77
He II Narrow	40.08 ± 0.28	489 ± 63	207 ± 25	2.30 ± 0.78
He II Broad	39.91 ± 0.46	1184 ± 63	503 ± 25	1.52 ± 1.19
H β Narrow	40.51 ± 0.12	492 ± 63	225 ± 30	6.62 ± 1.36
Hβ Broad	41.95 ± 0.03	4192 ± 261	3650 ± 104	182.29 ± 5.31
[O III] 5007	41.53 ± 0.01	492 ± 63	225 ± 30	71.71 ± 1.70
He I Narrow	39.97 ± 0.23	489 ± 63	207 ± 25	2.58 ± 0.94
He I Broad	41.58 ± 0.05	12309 ± 80	5227 ± 33	102.35 ± 5.00
[O I] 6300	40.18 ± 0.18	489 ± 63	207 ± 25	4.59 ± 1.20
H α Narrow	41.22 ± 0.03	489 ± 63	207 ± 25	54.14 ± 1.39
Hα Broad	42.39 ± 0.01	3326 ± 118	1760 ± 26	783.91 ± 5.20
[N II] 6585	41.47 ± 0.02	489 ± 63	207 ± 25	95.69 ± 1.98
[S II] 6718	40.86 ± 0.04	489 ± 63	207 ± 25	24.36 ± 1.72
[S II] 6732	40.86 ± 0.05	489 ± 63	207 ± 25	24.55 ± 1.60

Emission Summary

H α Broad SNR	15.85
H β Broad SNR	4.66
H γ Broad SNR	1.63
AGN frac	0.42
Host frac	0.58
$\log L_{5100, \text{Host}}$	43.50
Fe II/H β	0.71
Fe II/[O III]	1.87

Quality Flags

spurious_hab/hbb	0/0
15100	1
balmer	0
balmer_snr	1
hb_width	2
balmer_width	0