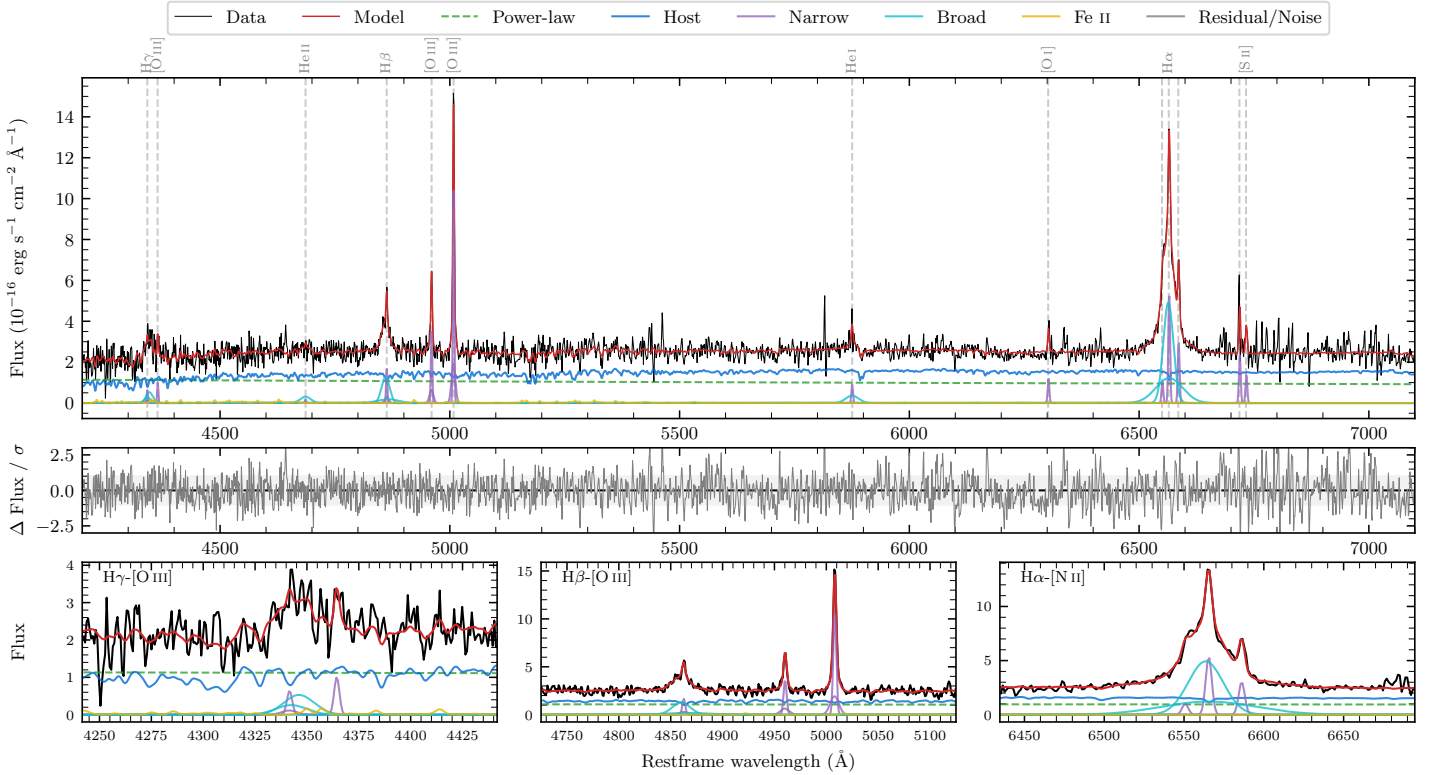
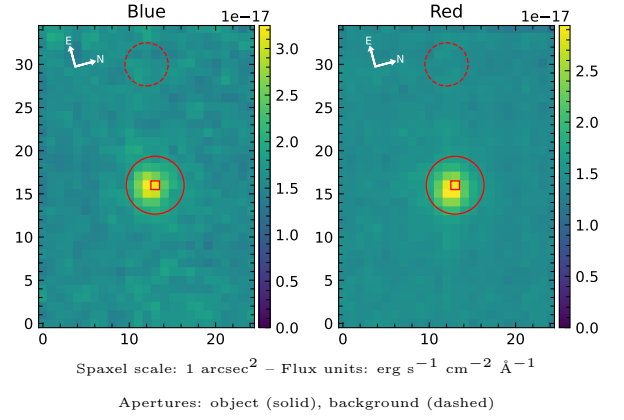


6dFGS gJ220955.8-101449

Spectrum ID	5158233_sp1	Spectrum Type	Sy 1.5
Alt name	g2209558-101449	Quality Flag	good
z	0.0833	AGN reference	6dFGS
RA, Dec	332.4824, -10.2469	MW $E(B - V)$	0.031
MJD	60093.77	Power law α_ν	-1.60 ± 0.30
SNR/ \AA B/R	6.8/9.6	$\log L_{5100, \text{AGN}}$	42.96 ± 0.05
Obs Airmass	1.14	$\log H\beta_{\text{Br}}/[\text{O III}]$	-0.18 ± 0.05
SMSS ID	5158233	$\log M_{L5100}/M_\odot$	6.74 ± 0.07
Closest SMSS	None $< 15''$	$\log M_{\text{H}\alpha}/M_\odot$	6.53 ± 0.04
SMSS Mean r_{psf}	17.8 ± 0.0	$\log M_{\text{H}\beta}/M_\odot$	6.60 ± 0.08
2MASS K_{ext}	nan \pm nan	$\log M_{[\text{O III}]} / M_\odot$	6.82 ± 0.07



Emission Line Measurements

Line	$\log L$ (erg s $^{-1}$)	FWHM (km s $^{-1}$)	σ (km s $^{-1}$)	EW (\AA)
H γ Narrow	39.76 ± 0.22	235 ± 63	160 ± 27	2.95 ± 1.07
Hγ Broad	40.46 ± 0.09	1216 ± 67	458 ± 25	13.96 ± 1.65
[O III] 4364	39.78 ± 0.14	213 ± 63	87 ± 25	3.12 ± 0.66
He II Narrow	39.09 ± 0.43	213 ± 63	87 ± 25	0.66 ± 0.59
He II Broad	40.23 ± 0.14	1715 ± 92	728 ± 38	8.88 ± 1.74
H β Narrow	40.23 ± 0.07	235 ± 63	160 ± 27	9.07 ± 1.04
Hβ Broad	40.86 ± 0.05	1385 ± 94	589 ± 96	38.46 ± 2.45
[O III] 5007	41.04 ± 0.01	235 ± 63	160 ± 27	60.93 ± 1.17
He I Narrow	39.86 ± 0.17	213 ± 63	87 ± 25	4.27 ± 0.79
He I Broad	40.37 ± 0.10	1672 ± 88	710 ± 36	13.80 ± 1.97
[O I] 6300	40.01 ± 0.08	213 ± 63	87 ± 25	6.10 ± 0.74
H α Narrow	40.68 ± 0.02	213 ± 63	87 ± 25	29.31 ± 0.66
Hα Broad	41.62 ± 0.01	1346 ± 65	639 ± 26	256.27 ± 2.74
[N II] 6585	40.43 ± 0.03	213 ± 63	87 ± 25	16.58 ± 0.60
[S II] 6718	40.33 ± 0.07	213 ± 63	87 ± 25	13.17 ± 1.19
[S II] 6732	40.10 ± 0.06	213 ± 63	87 ± 25	7.76 ± 0.82

Emission Summary

H α Broad SNR	16.13
H β Broad SNR	3.83
H γ Broad SNR	2.15
AGN frac	0.44
Host frac	0.56
$\log L_{5100, \text{Host}}$	43.07
Fe II/H β	0.35
Fe II/[O III]	0.22

Quality Flags

spurious_hab/hbb	0/0
15100	1
balmer	0
balmer_snr	1
hb_width	0
balmer_width	0