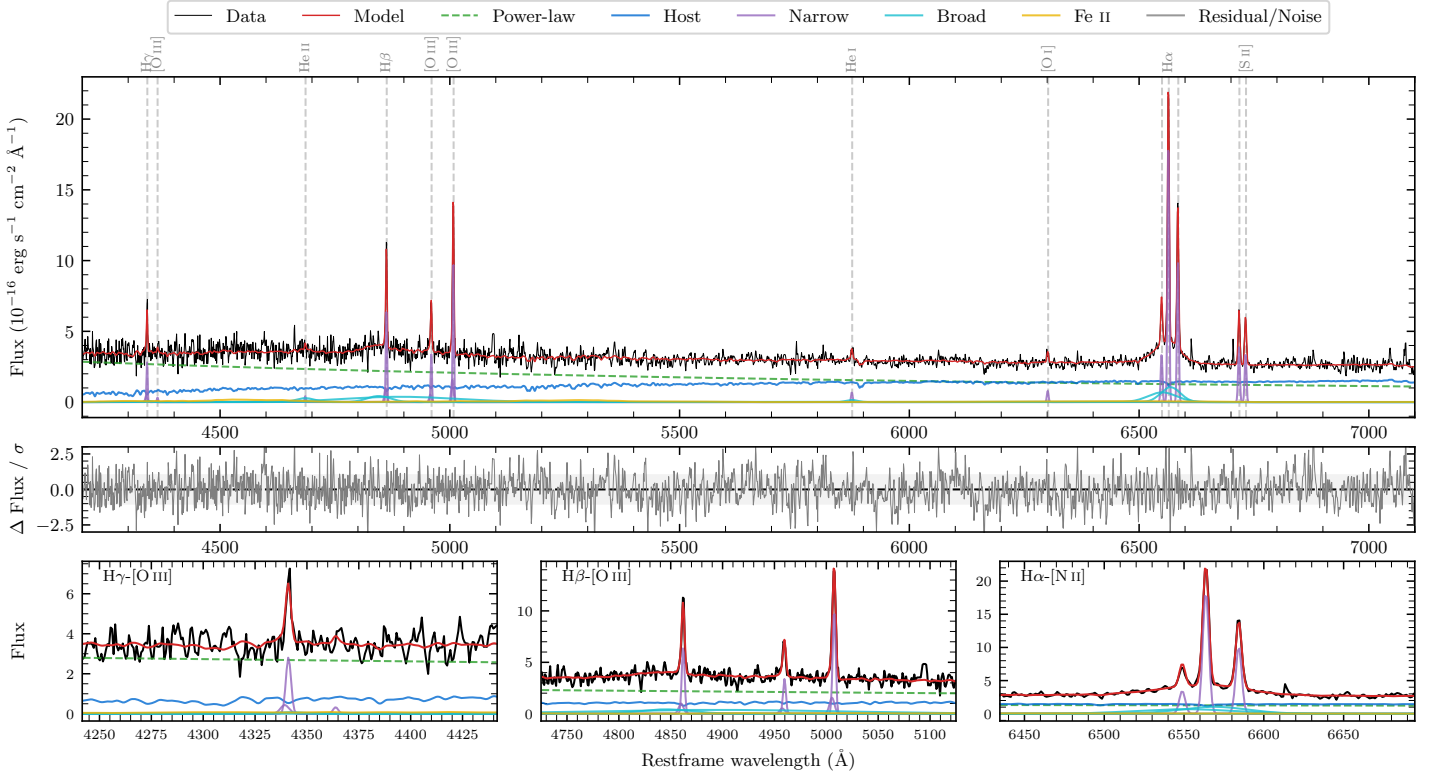
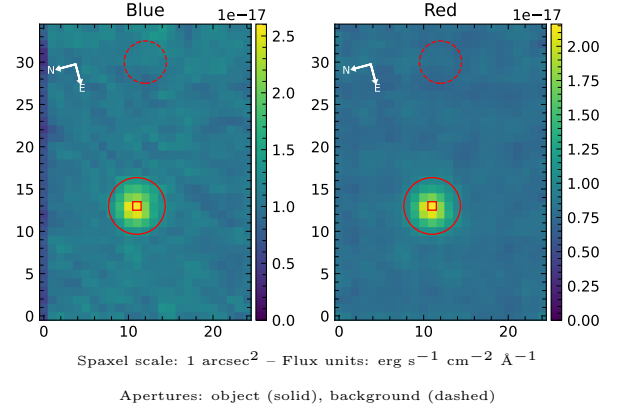


6dFGS gJ220156.8-782828

Spectrum ID	485497723.sp1	Spectrum Type	Sy 1.5
Alt name	g2201568-782828	Quality Flag	good
z	0.0951	AGN reference	6dFGS
RA, Dec	330.4868, -78.4743	MW $E(B - V)$	0.133
MJD	60168.61	Power law α_ν	-0.19 ± 0.22
SNR/ \AA B/R	8.2/11.0	$\log L_{5100, \text{AGN}}$	43.37 ± 0.03
Obs Airmass	1.47	$\log H\beta_{\text{Br}}/[\text{O III}]$	-0.23 ± 0.41
SMSS ID	485497723	$\log M_{L5100}/M_\odot$	7.76 ± 0.04
Closest SMSS	6.33", 1591224669	$\log M_{\text{H}\alpha}/M_\odot$	7.04 ± 0.05
SMSS Mean r_{psf}	16.8 ± 0.0	$\log M_{\text{H}\beta}/M_\odot$	7.43 ± 0.20
2MASS K_{ext}	12.9 ± 0.1	$\log M_{[\text{O III}]} / M_\odot$	7.67 ± 0.05



Emission Line Measurements

Line	$\log L$ (erg s $^{-1}$)	FWHM (km s $^{-1}$)	σ (km s $^{-1}$)	EW (Å)
H γ Narrow	40.44 ± 0.06	222 ± 63	111 ± 26	4.47 ± 0.42
Hγ Broad	—	—	—	—
[O III] 4364	39.41 ± 0.41	208 ± 62	85 ± 25	0.42 ± 0.32
He II Narrow	39.55 ± 0.32	208 ± 62	85 ± 25	0.66 ± 0.33
He II Broad	—	—	—	—
H β Narrow	40.85 ± 0.02	222 ± 63	111 ± 26	14.12 ± 0.49
Hβ Broad	$40.82^{+0.73}_{-0.10}$	3668 ± 158	1292 ± 59	13.48 ± 1.65
[O III] 5007	41.05 ± 0.02	222 ± 63	111 ± 26	23.90 ± 0.56
He I Narrow	39.86 ± 0.14	208 ± 62	85 ± 25	2.05 ± 0.32
He I Broad	40.07 ± 0.22	1497 ± 109	635 ± 45	3.34 ± 0.94
[O I] 6300	39.95 ± 0.10	208 ± 62	85 ± 25	2.85 ± 0.40
H α Narrow	41.34 ± 0.01	208 ± 62	85 ± 25	74.79 ± 0.57
Hα Broad	41.44 ± 0.02	2751 ± 121	1078 ± 35	94.24 ± 2.02
[N II] 6585	41.07 ± 0.01	208 ± 62	85 ± 25	41.21 ± 0.46
[S II] 6718	40.67 ± 0.02	208 ± 62	85 ± 25	16.66 ± 0.52
[S II] 6732	40.61 ± 0.03	208 ± 62	85 ± 25	14.78 ± 0.55

Emission Summary

H α Broad SNR	3.94
H β Broad SNR	1.03
H γ Broad SNR	0.40
AGN frac	0.66
Host frac	0.34
$\log L_{5100, \text{Host}}$	43.07
Fe II/H β	—
Fe II/[O III]	—

Quality Flags

spurious_hab/hbb	0/1
15100	0
balmer	1
balmer_snr	2
hb_width	0
balmer_width	0