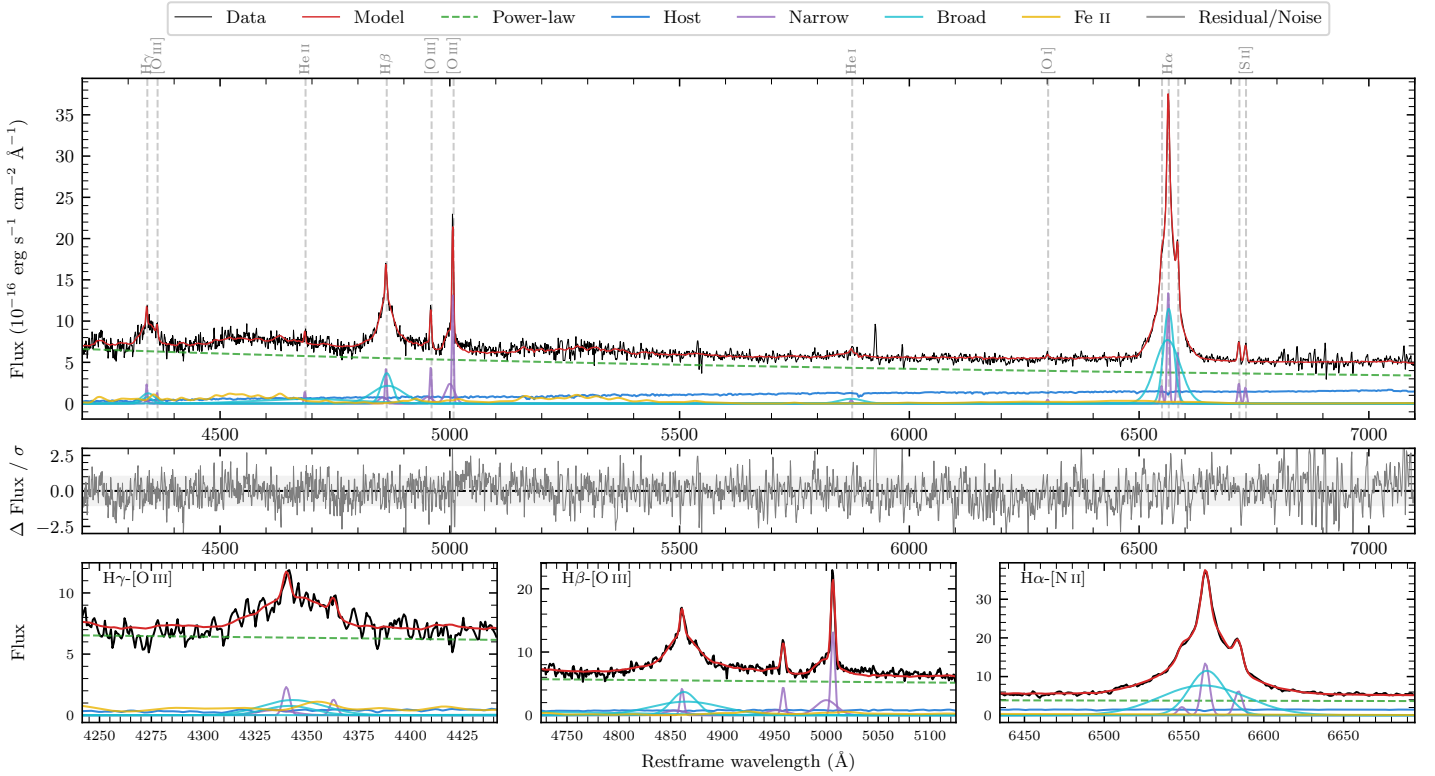
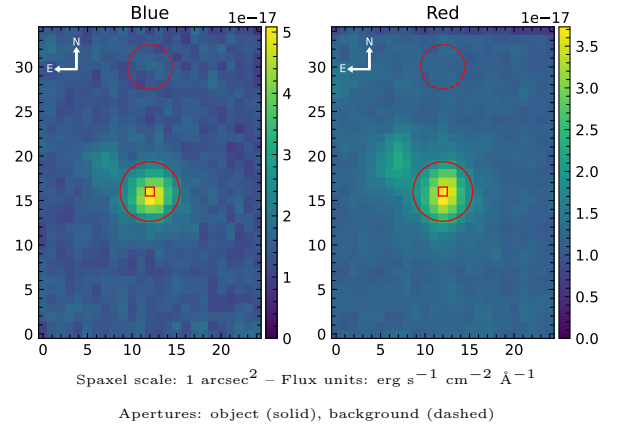


# 2MASS J21490739-1751595

Spectrum ID	3783718_sp1	Spectrum Type	Sy 1.2
Alt name	g2149074-175159	Quality Flag	good
$z$	0.0627	AGN reference	6dFGS
RA, Dec	327.2808, -17.8665	MW $E(B - V)$	0.037
MJD	60090.8	Power law $\alpha_\nu$	$-0.73 \pm 0.12$
SNR/ $\text{\AA}$ B/R	12.1/16.3	$\log L_{5100, \text{AGN}}$	$43.40 \pm 0.02$
Obs Airmass	1.03	$\log H\beta_{\text{Br}} / [\text{O III}]$	$0.38 \pm 0.02$
SMSS ID	3783718	$\log M_{L5100} / M_\odot$	$7.39 \pm 0.04$
Closest SMSS	6.36", 3783719	$\log M_{\text{H}\alpha} / M_\odot$	$6.87 \pm 0.04$
SMSS Mean $r_{\text{psf}}$	$16.6 \pm 0.1$	$\log M_{\text{H}\beta} / M_\odot$	$7.34 \pm 0.05$
2MASS $K_{\text{ext}}$	$13.4 \pm 0.1$	$\log M_{[\text{O III}]} / M_\odot$	$7.30 \pm 0.05$



## Emission Line Measurements

Line	$\log L$ (erg s $^{-1}$ )	FWHM (km s $^{-1}$ )	$\sigma$ (km s $^{-1}$ )	EW (Angstrom)
H $\gamma$ Narrow	$40.28 \pm 0.12$	$306 \pm 63$	$462 \pm 27$	$3.15 \pm 0.52$
<b>H<math>\gamma</math> Broad</b>	<b><math>40.87 \pm 0.05</math></b>	<b><math>2281 \pm 221</math></b>	<b><math>833 \pm 77</math></b>	<b><math>11.67 \pm 0.70</math></b>
[O III] 4364	$39.74 \pm 0.18$	$277 \pm 63$	$116 \pm 25$	$0.91 \pm 0.22$
He II Narrow	$39.82 \pm 0.12$	$277 \pm 63$	$116 \pm 25$	$1.19 \pm 0.23$
He II Broad	$41.20 \pm 0.05$	$16506 \pm 177$	$7009 \pm 75$	$28.66 \pm 1.79$
H $\beta$ Narrow	$40.59 \pm 0.05$	$306 \pm 63$	$462 \pm 27$	$7.38 \pm 0.51$
<b>H<math>\beta</math> Broad</b>	<b><math>41.48 \pm 0.01</math></b>	<b><math>2343 \pm 110</math></b>	<b><math>1304 \pm 48</math></b>	<b><math>57.80 \pm 0.99</math></b>
[O III] 5007	$41.10 \pm 0.01$	$306 \pm 63$	$462 \pm 27$	$24.79 \pm 0.54$
He I Narrow	$39.44 \pm 0.20$	$277 \pm 63$	$116 \pm 25$	$0.66 \pm 0.20$
He I Broad	$40.58 \pm 0.06$	$3118 \pm 181$	$1324 \pm 76$	$9.22 \pm 0.70$
[O I] 6300	$39.48 \pm 0.16$	$277 \pm 63$	$116 \pm 25$	$0.80 \pm 0.19$
H $\alpha$ Narrow	$40.94 \pm 0.01$	$277 \pm 63$	$116 \pm 25$	$24.21 \pm 0.32$
<b>H<math>\alpha</math> Broad</b>	<b><math>41.93 \pm 0.01</math></b>	<b><math>1592 \pm 65</math></b>	<b><math>787 \pm 25</math></b>	<b><math>237.91 \pm 0.84</math></b>
[N II] 6585	$40.61 \pm 0.02$	$277 \pm 63$	$116 \pm 25$	$11.26 \pm 0.27$
[S II] 6718	$40.21 \pm 0.03$	$277 \pm 63$	$116 \pm 25$	$4.59 \pm 0.23$
[S II] 6732	$40.11 \pm 0.04$	$277 \pm 63$	$116 \pm 25$	$3.70 \pm 0.23$

## Emission Summary

H $\alpha$ Broad SNR	33.36
H $\beta$ Broad SNR	10.15
H $\gamma$ Broad SNR	3.56
AGN frac	0.87
Host frac	0.13
$\log L_{5100, \text{Host}}$	42.57
Fe II/H $\beta$	0.89
Fe II/[O III]	2.14

## Quality Flags

spurious_hab/hbb	0/0
15100	0
balmer	0
balmer_snr	0
hb_width	1
balmer_width	0