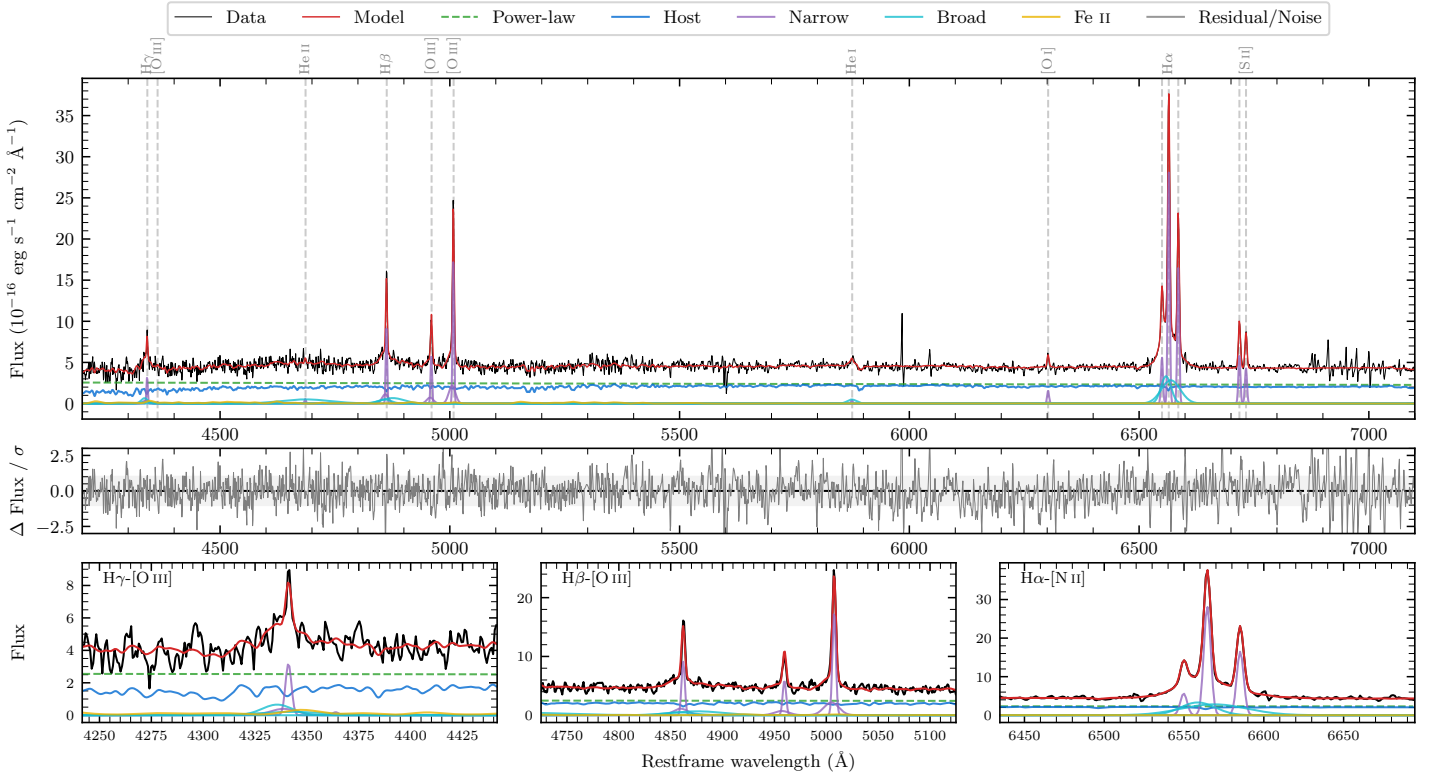
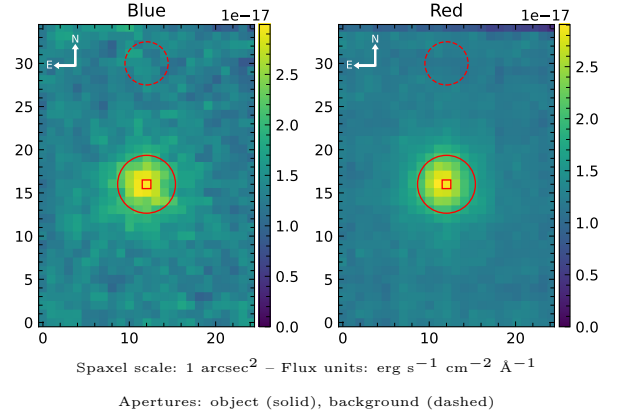


# SDSS J214903.96-014111.7

Spectrum ID	5439861.sp1	Spectrum Type	Sy 1.5
Alt name	g2149040-014112	Quality Flag	good
$z$	0.0527	AGN reference	6dFGS
RA, Dec	327.2665, -1.6866	MW $E(B - V)$	0.055
MJD	60091.75	Power law $\alpha_\nu$	$-1.77 \pm 0.10$
SNR/ $\text{\AA}$ B/R	8.5/14.1	$\log L_{5100, \text{AGN}}$	$42.92 \pm 0.03$
Obs Airmass	1.25	$\log H\beta_{\text{Br}}/[\text{O III}]$	$-0.28 \pm 0.06$
SMSS ID	5439861	$\log M_{L5100}/M_\odot$	$7.45 \pm 0.10$
Closest SMSS	None $< 15''$	$\log M_{\text{H}\alpha}/M_\odot$	$6.44 \pm 0.05$
SMSS Mean $r_{\text{psf}}$	$16.8 \pm 0.0$	$\log M_{\text{H}\beta}/M_\odot$	$7.22 \pm 0.11$
2MASS $K_{\text{ext}}$	$13.4 \pm 0.2$	$\log M_{[\text{O III}]} / M_\odot$	$7.47 \pm 0.10$



## Emission Line Measurements

Line	$\log L$ (erg s <sup>-1</sup> )	FWHM (km s <sup>-1</sup> )	$\sigma$ (km s <sup>-1</sup> )	EW (Å)
H $\gamma$ Narrow	$40.09 \pm 0.08$	$257 \pm 63$	$278 \pm 29$	$7.32 \pm 1.15$
<b>H<math>\gamma</math> Broad</b>	<b><math>40.18 \pm 0.14</math></b>	<b><math>1371 \pm 195</math></b>	<b><math>653 \pm 146</math></b>	<b><math>8.40 \pm 1.68</math></b>
[O III] 4364	—	—	—	—
He II Narrow	$39.18 \pm 0.30$	$236 \pm 62$	$99 \pm 25$	$0.92 \pm 0.46$
He II Broad	$40.68 \pm 0.07$	$8049 \pm 74$	$3418 \pm 30$	$28.82 \pm 2.63$
H $\beta$ Narrow	$40.60 \pm 0.03$	$257 \pm 63$	$278 \pm 29$	$24.07 \pm 0.97$
<b>H<math>\beta</math> Broad</b>	<b><math>40.62 \pm 0.06</math></b>	<b><math>3210 \pm 351</math></b>	<b><math>1208 \pm 51</math></b>	<b><math>25.20 \pm 1.74</math></b>
[O III] 5007	$40.89 \pm 0.01$	$257 \pm 63$	$278 \pm 29$	$48.13 \pm 0.88$
He I Narrow	$39.17 \pm 0.25$	$236 \pm 62$	$99 \pm 25$	$0.93 \pm 0.28$
He I Broad	$39.93 \pm 0.10$	$1180 \pm 62$	$501 \pm 25$	$5.45 \pm 0.66$
[O I] 6300	$39.76 \pm 0.05$	$236 \pm 62$	$99 \pm 25$	$3.70 \pm 0.29$
H $\alpha$ Narrow	$41.03 \pm 0.01$	$236 \pm 62$	$99 \pm 25$	$69.96 \pm 0.44$
<b>H<math>\alpha</math> Broad</b>	<b><math>41.22 \pm 0.01</math></b>	<b><math>1613 \pm 80</math></b>	<b><math>674 \pm 25</math></b>	<b><math>108.15 \pm 1.17</math></b>
[N II] 6585	$40.80 \pm 0.01$	$236 \pm 62$	$99 \pm 25$	$41.12 \pm 0.41$
[S II] 6718	$40.36 \pm 0.02$	$236 \pm 62$	$99 \pm 25$	$14.97 \pm 0.32$
[S II] 6732	$40.23 \pm 0.02$	$236 \pm 62$	$99 \pm 25$	$11.05 \pm 0.32$

## Emission Summary

H $\alpha$ Broad SNR	10.61
H $\beta$ Broad SNR	1.94
H $\gamma$ Broad SNR	1.61
AGN frac	0.57
Host frac	0.43
$\log L_{5100, \text{Host}}$	42.80
Fe II/H $\beta$	0.71
Fe II/[O III]	0.37

## Quality Flags

spurious_hab/hbb	0/0
15100	0
balmer	1
balmer_snr	2
hb_width	0
balmer_width	1