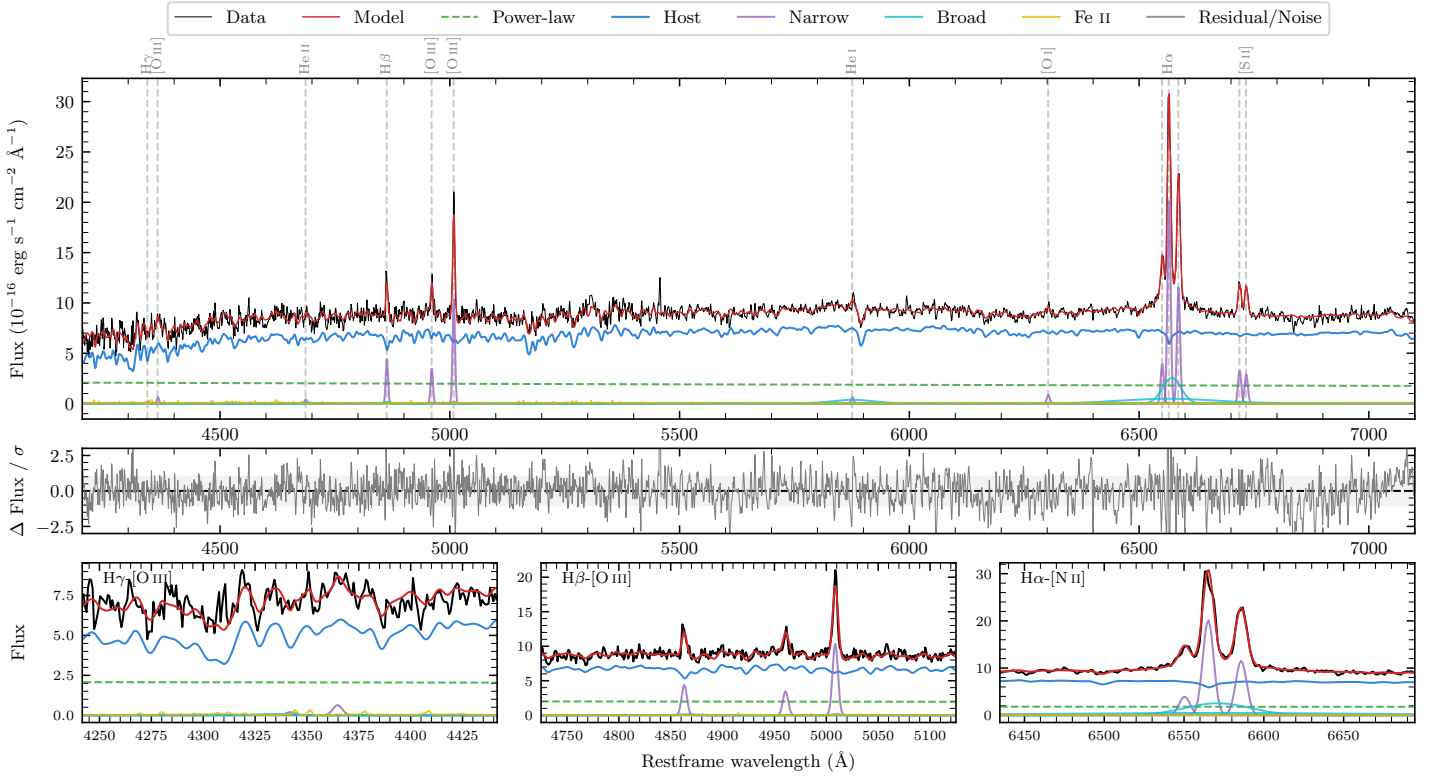
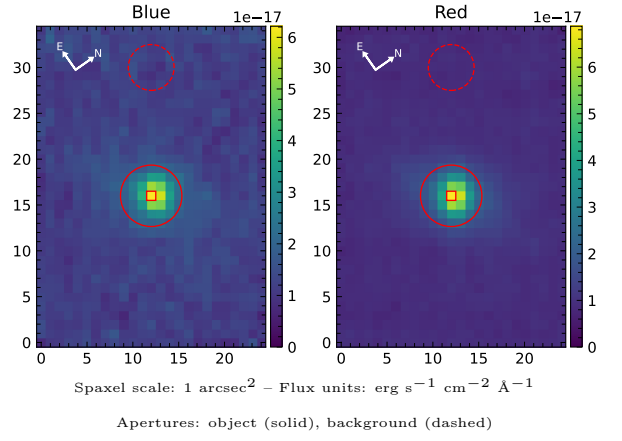


LEDA 3093962

Spectrum ID	3905070_sp1	Spectrum Type	Sy 1.5+
Alt name	g2142147-162948	Quality Flag	good
z	0.0516	AGN reference	6dFGS
RA, Dec	325.5612, -16.4967	MW $E(B - V)$	0.037
MJD	60168.56	Power law α_ν	-1.68 ± 0.15
SNR/ \AA B/R	15.1/28.2	$\log L_{5100, \text{AGN}}$	42.79 ± 0.10
Obs Airmass	1.07	$\log H\beta_{\text{Br}}/[\text{O III}]$	< -0.37
SMSS ID	3905070	$\log M_{L5100}/M_\odot$	—
Closest SMSS	None $< 15''$	$\log M_{\text{H}\alpha}/M_\odot$	6.82 ± 0.04
SMSS Mean r_{psf}	15.7 ± 0.1	$\log M_{\text{H}\beta}/M_\odot$	—
2MASS K_{ext}	12.2 ± 0.1	$\log M_{[\text{O III}]} / M_\odot$	—



Emission Line Measurements

Line	$\log L$ (erg s $^{-1}$)	FWHM (km s $^{-1}$)	σ (km s $^{-1}$)	EW (\AA)
H γ Narrow	—	—	—	—
Hγ Broad	—	—	—	—
[O III] 4364	39.37 ± 0.27	365 ± 62	154 ± 25	1.83 ± 0.74
He II Narrow	39.22 ± 0.37	365 ± 62	154 ± 25	1.33 ± 0.69
He II Broad	39.34 ± 0.45	1317 ± 62	559 ± 25	1.73 ± 1.29
H β Narrow	40.28 ± 0.05	367 ± 63	156 ± 25	14.96 ± 0.76
Hβ Broad	< 40.26	—	—	—
[O III] 5007	40.66 ± 0.01	367 ± 63	156 ± 25	36.58 ± 0.79
He I Narrow	39.49 ± 0.14	365 ± 62	154 ± 25	2.62 ± 0.47
He I Broad	40.45 ± 0.07	5515 ± 62	2342 ± 25	24.25 ± 1.96
[O I] 6300	39.66 ± 0.09	365 ± 62	154 ± 25	3.98 ± 0.47
H α Narrow	41.05 ± 0.01	365 ± 62	154 ± 25	99.58 ± 0.68
Hα Broad	41.23 ± 0.02	2465 ± 77	2066 ± 74	149.67 ± 3.01
[N II] 6585	40.81 ± 0.01	365 ± 62	154 ± 25	57.27 ± 0.64
[S II] 6718	40.28 ± 0.02	365 ± 62	154 ± 25	16.75 ± 0.52
[S II] 6732	40.22 ± 0.03	365 ± 62	154 ± 25	14.83 ± 0.54

Emission Summary

H α Broad SNR	5.39
H β Broad SNR	0.53
H γ Broad SNR	0.00
AGN frac	0.23
Host frac	0.77
$\log L_{5100, \text{Host}}$	43.32
Fe II/H β	—
Fe II/[O III]	0.35

Quality Flags

spurious_hab/hbb	0/0
15100	1
balmer	2
balmer_snr	2
hb_width	2
balmer_width	2