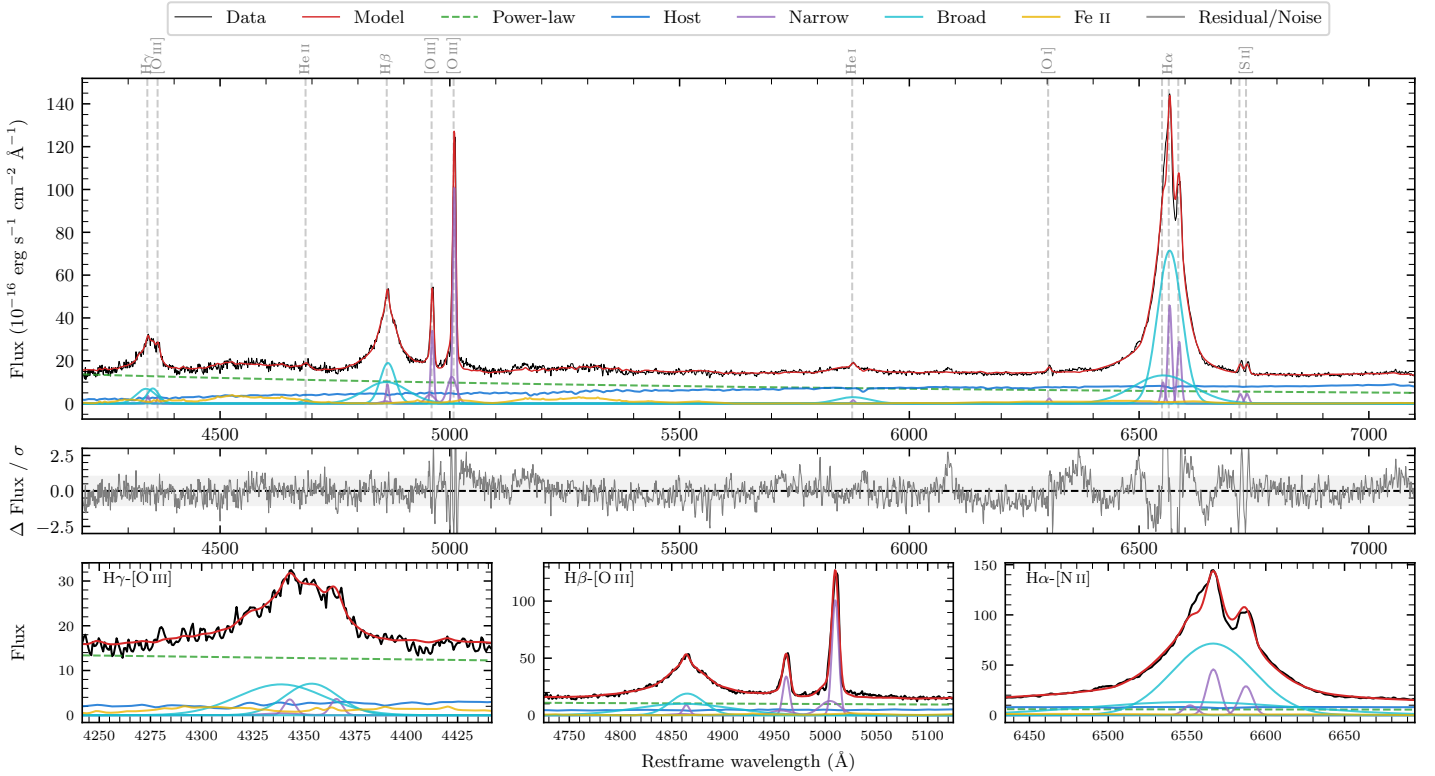
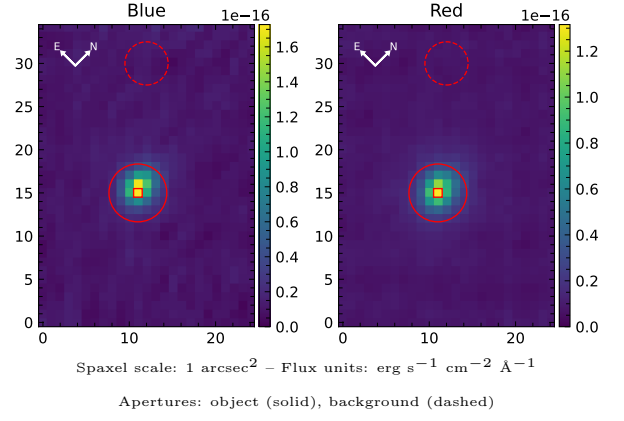


LEDA 89176

Spectrum ID	486390513_sp1	Spectrum Type	Sy 1.5
Alt name	g2136231-622401	Quality Flag	good
z	0.0589	AGN reference	6dFGS
RA, Dec	324.0963, -62.4001	MW $E(B - V)$	0.031
MJD	60167.6	Power law α_ν	-0.09 ± 0.24
SNR/Å B/R	10.2/17.8	$\log L_{5100, \text{AGN}}$	43.60 ± 0.03
Obs Airmass	1.17	$\log H\beta_{\text{Br}} / [\text{O III}]$	0.24 ± 0.01
SMSS ID	486390513	$\log M_{L5100} / M_\odot$	7.72 ± 0.03
Closest SMSS	8.71", 2694776100	$\log M_{\text{H}\alpha} / M_\odot$	7.96 ± 0.04
SMSS Mean r_{psf}	14.3 ± 0.0	$\log M_{\text{H}\beta} / M_\odot$	7.93 ± 0.03
2MASS K_{ext}	11.4 ± 0.0	$\log M_{[\text{O III}]} / M_\odot$	8.00 ± 0.03



Emission Line Measurements

Line	$\log L$ (erg s $^{-1}$)	FWHM (km s $^{-1}$)	σ (km s $^{-1}$)	EW (Å)
H γ Narrow	40.48 ± 0.17	498 ± 63	383 ± 26	2.88 ± 0.72
Hγ Broad	41.72 ± 0.02	2950 ± 189	1168 ± 44	49.39 ± 1.20
[O III] 4364	40.36 ± 0.16	465 ± 63	196 ± 25	2.19 ± 0.43
He II Narrow	39.76 ± 0.40	465 ± 63	196 ± 25	0.63 ± 0.41
He II Broad	40.65 ± 0.13	1487 ± 215	631 ± 91	4.62 ± 0.77
H β Narrow	40.94 ± 0.06	498 ± 63	383 ± 26	10.16 ± 0.84
Hβ Broad	42.24 ± 0.01	3138 ± 95	1733 ± 46	202.35 ± 1.86
[O III] 5007	42.00 ± 0.01	498 ± 63	383 ± 26	124.60 ± 0.93
He I Narrow	40.13 ± 0.12	465 ± 63	196 ± 25	2.28 ± 0.38
He I Broad	41.38 ± 0.02	4410 ± 168	1873 ± 71	40.52 ± 1.23
[O I] 6300	40.34 ± 0.06	465 ± 63	196 ± 25	4.21 ± 0.41
H α Narrow	41.63 ± 0.01	465 ± 63	196 ± 25	89.89 ± 1.04
Hα Broad	42.78 ± 0.01	3100 ± 65	1392 ± 25	1245.26 ± 2.35
[N II] 6585	41.44 ± 0.02	465 ± 63	196 ± 25	57.42 ± 0.94
[S II] 6718	40.63 ± 0.03	465 ± 63	196 ± 25	9.35 ± 0.55
[S II] 6732	40.64 ± 0.03	465 ± 63	196 ± 25	9.62 ± 0.51

Emission Summary

H α Broad SNR	51.46
H β Broad SNR	17.70
H γ Broad SNR	7.82
AGN frac	0.65
Host frac	0.35
$\log L_{5100, \text{Host}}$	43.33
Fe II/H β	0.38
Fe II/[O III]	0.66

Quality Flags

spurious_hab/hbb	0/0
15100	0
balmer	0
balmer_snr	0
hb_width	1
balmer_width	0