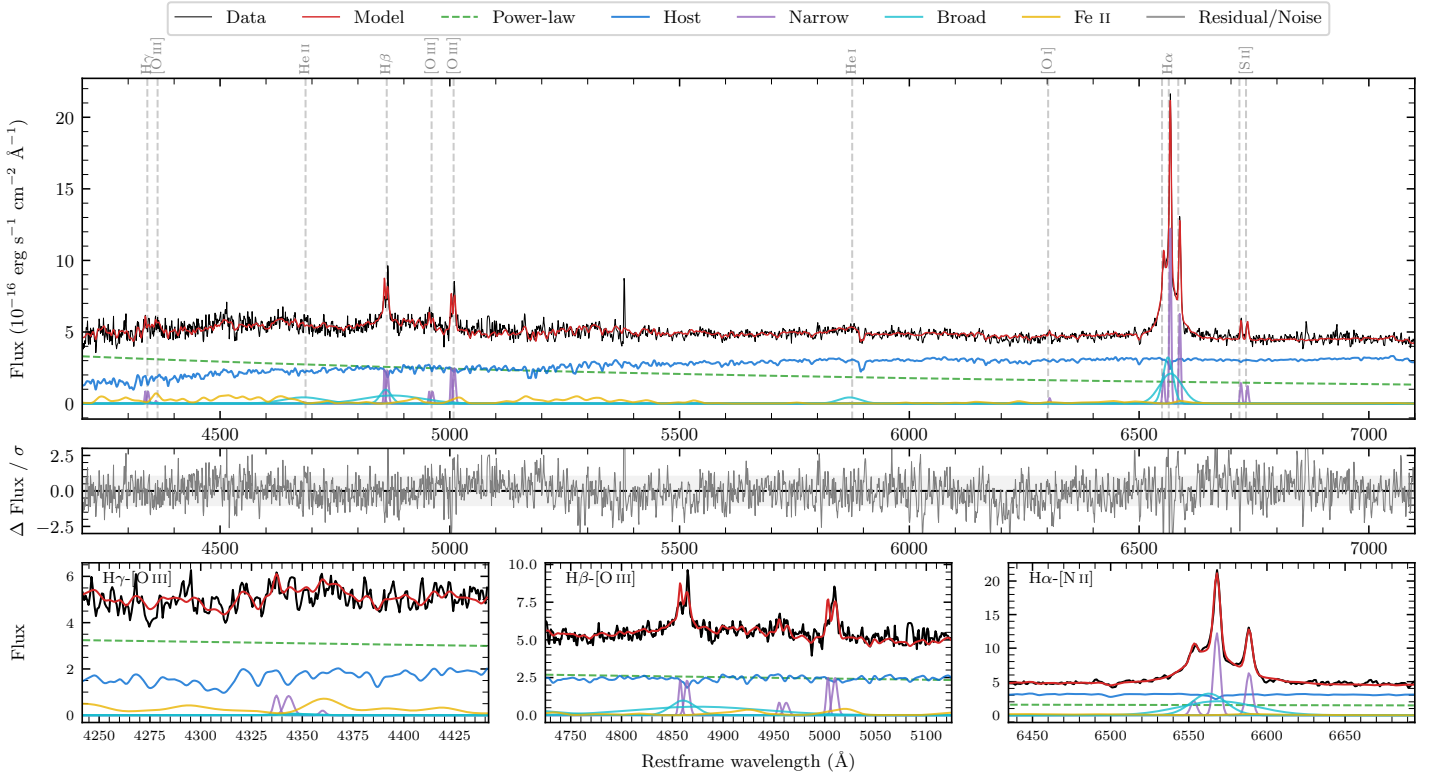
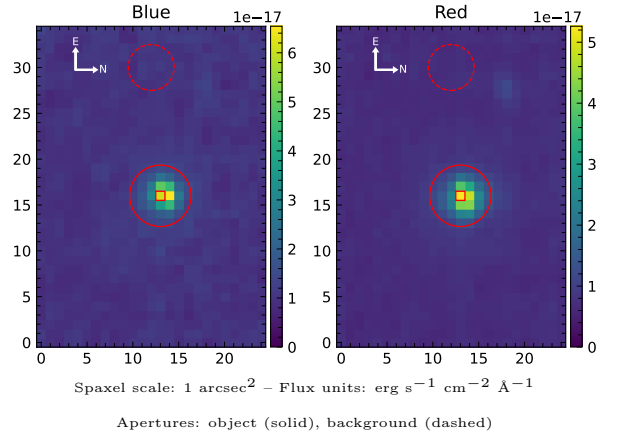


# LEDA 450709

Spectrum ID	488693815_sp1	Spectrum Type	Sy 1.2
Alt name	g2129474-515650	Quality Flag	good
$z$	0.0981	AGN reference	6dFGS
RA, Dec	322.4473, -51.9471	MW $E(B - V)$	0.019
MJD	60167.57	Power law $\alpha_\nu$	$-0.26 \pm 0.16$
SNR/ $\text{\AA}$ B/R	14.7/21.9	$\log L_{5100, \text{AGN}}$	$43.46 \pm 0.03$
Obs Airmass	1.08	$\log H\beta_{\text{Br}}/[\text{O III}]$	$0.67 \pm 0.04$
SMSS ID	488693815	$\log M_{L5100}/M_\odot$	$7.48 \pm 0.09$
Closest SMSS	12.51", 488693821	$\log M_{\text{H}\alpha}/M_\odot$	$6.73 \pm 0.04$
SMSS Mean $r_{\text{psf}}$	$16.7 \pm 0.1$	$\log M_{\text{H}\beta}/M_\odot$	$7.42 \pm 0.09$
2MASS $K_{\text{ext}}$	$13.1 \pm 0.1$	$\log M_{[\text{O III}]} / M_\odot$	$7.24 \pm 0.10$



## Emission Line Measurements

Line	$\log L$ (erg s $^{-1}$ )	FWHM (km s $^{-1}$ )	$\sigma$ (km s $^{-1}$ )	EW (Å)
H $\gamma$ Narrow	$40.30 \pm 0.14$	—	$241 \pm 25$	$2.64 \pm 0.34$
<b>H<math>\gamma</math> Broad</b>	—	—	—	—
[O III] 4364	$39.26 \pm 0.45$	$225 \pm 63$	$94 \pm 25$	$0.25 \pm 0.25$
He II Narrow	—	—	—	—
He II Broad	$41.11 \pm 0.06$	$6703 \pm 63$	$2846 \pm 25$	$19.50 \pm 1.50$
H $\beta$ Narrow	$40.79 \pm 0.06$	—	$241 \pm 25$	$9.93 \pm 0.45$
<b>H<math>\beta</math> Broad</b>	<b><math>41.50 \pm 0.03</math></b>	<b><math>2536 \pm 247</math></b>	<b><math>2656 \pm 85</math></b>	<b><math>51.88 \pm 2.14</math></b>
[O III] 5007	$40.83 \pm 0.03$	—	$241 \pm 25$	$11.61 \pm 0.47$
He I Narrow	—	—	—	—
He I Broad	$40.83 \pm 0.05$	$2869 \pm 63$	$1218 \pm 25$	$15.30 \pm 0.95$
[O I] 6300	$39.71 \pm 0.15$	$225 \pm 63$	$94 \pm 25$	$1.31 \pm 0.30$
H $\alpha$ Narrow	$41.22 \pm 0.01$	$225 \pm 63$	$94 \pm 25$	$45.83 \pm 0.41$
<b>H<math>\alpha</math> Broad</b>	<b><math>41.76 \pm 0.01</math></b>	<b><math>1542 \pm 69</math></b>	<b><math>718 \pm 25</math></b>	<b><math>156.79 \pm 1.29</math></b>
[N II] 6585	$40.94 \pm 0.01$	$225 \pm 63$	$94 \pm 25$	$23.90 \pm 0.38$
[S II] 6718	$40.30 \pm 0.05$	$225 \pm 63$	$94 \pm 25$	$5.75 \pm 0.39$
[S II] 6732	$40.24 \pm 0.06$	$225 \pm 63$	$94 \pm 25$	$5.00 \pm 0.36$

## Emission Summary

H $\alpha$ Broad SNR	15.05
H $\beta$ Broad SNR	4.37
H $\gamma$ Broad SNR	0.52
AGN frac	0.49
Host frac	0.51
$\log L_{5100, \text{Host}}$	43.47
Fe II/H $\beta$	0.97
Fe II/[O III]	4.52

## Quality Flags

spurious_hab/hbb	0/0
15100	1
balmer	0
balmer_snr	2
hb_width	2
balmer_width	0