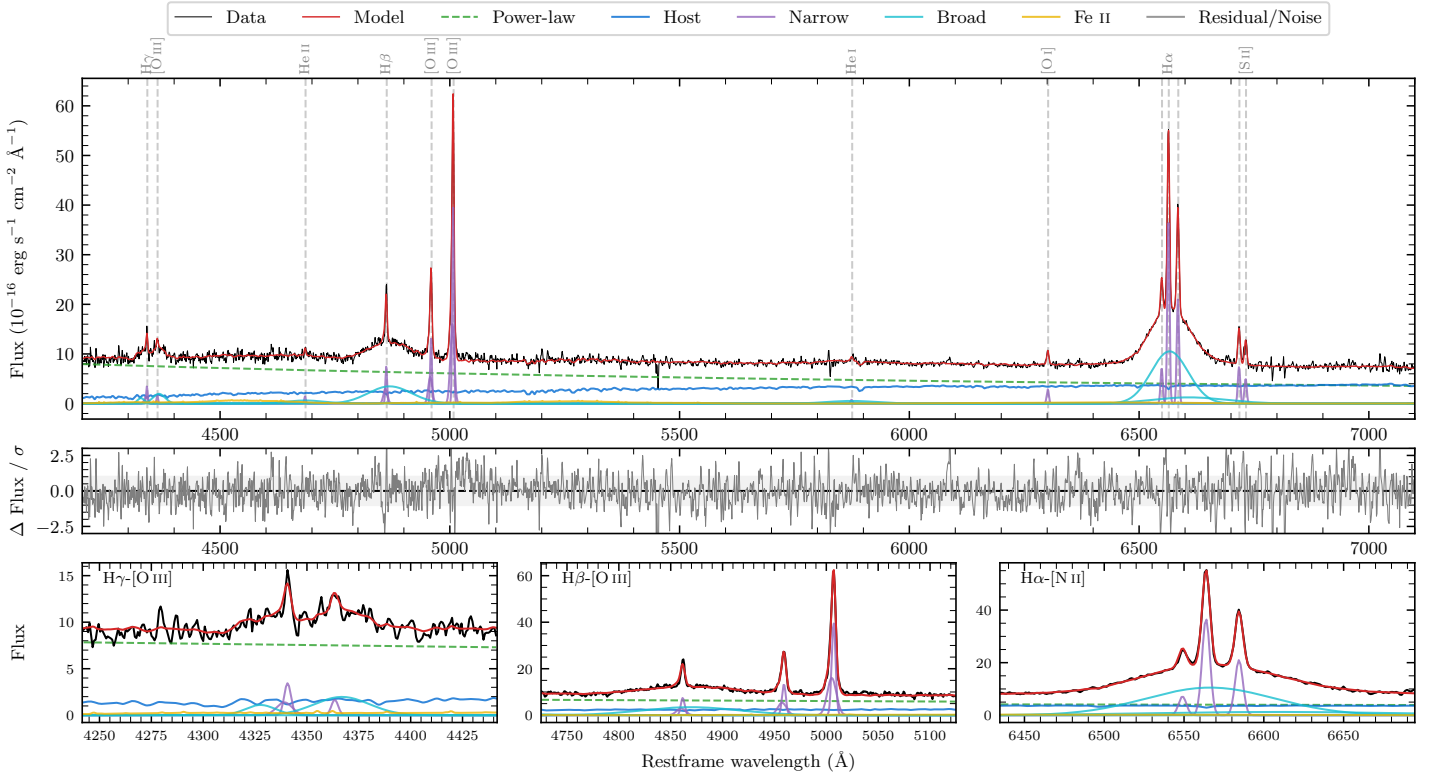
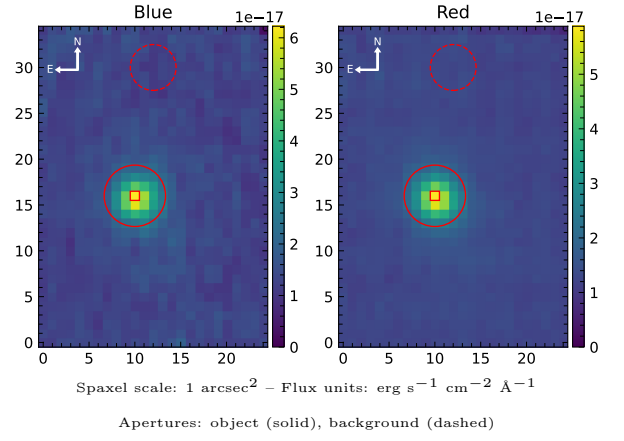


## 2MASS J21034786-3606149

Spectrum ID	488143207_sp1	Spectrum Type	Sy 1.5
Alt name	g2103479-360615	Quality Flag	good
$z$	0.0814	AGN reference	6dFGS
RA, Dec	315.9495, -36.1041	MW $E(B - V)$	0.074
MJD	60083.78	Power law $\alpha_\nu$	$-0.47 \pm 0.15$
SNR/ $\text{\AA}$ B/R	15.2/21.3	$\log L_{5100, \text{AGN}}$	$43.70 \pm 0.02$
Obs Airmass	1.01	$\log H\beta_{\text{Br}}/[\text{O III}]$	$0.07 \pm 0.02$
SMSS ID	488143207	$\log M_{L5100}/M_\odot$	$8.42 \pm 0.03$
Closest SMSS	None $< 15''$	$\log M_{\text{H}\alpha}/M_\odot$	$8.05 \pm 0.02$
SMSS Mean $r_{\text{psf}}$	$16.4 \pm 0.0$	$\log M_{\text{H}\beta}/M_\odot$	$8.42 \pm 0.03$
2MASS $K_{\text{ext}}$	$12.8 \pm 0.1$	$\log M_{[\text{O III}]} / M_\odot$	$8.55 \pm 0.03$



### Emission Line Measurements

Line	$\log L$ (erg s <sup>-1</sup> )	FWHM (km s <sup>-1</sup> )	$\sigma$ (km s <sup>-1</sup> )	EW (Å)
H $\gamma$ Narrow	$40.68 \pm 0.05$	$325 \pm 63$	$204 \pm 26$	$3.88 \pm 0.29$
<b>H<math>\gamma</math> Broad</b>	<b><math>41.18 \pm 0.04</math></b>	—	<b><math>1307 \pm 62</math></b>	<b><math>12.28 \pm 0.57</math></b>
[O III] 4364	$40.09 \pm 0.14$	$266 \pm 62$	$112 \pm 25$	$0.99 \pm 0.19$
He II Narrow	$40.05 \pm 0.13$	$266 \pm 62$	$112 \pm 25$	$1.02 \pm 0.19$
He II Broad	$41.04 \pm 0.08$	$6185 \pm 333$	$2626 \pm 141$	$10.34 \pm 0.93$
H $\beta$ Narrow	$41.07 \pm 0.02$	$325 \pm 63$	$204 \pm 26$	$11.18 \pm 0.32$
<b>H<math>\beta</math> Broad</b>	<b><math>41.88 \pm 0.02</math></b>	<b><math>6641 \pm 228</math></b>	<b><math>2505 \pm 93</math></b>	<b><math>70.65 \pm 1.11</math></b>
[O III] 5007	$41.81 \pm 0.01$	$325 \pm 63$	$204 \pm 26$	$64.30 \pm 0.39$
He I Narrow	$39.88 \pm 0.13$	$266 \pm 62$	$112 \pm 25$	$0.96 \pm 0.21$
He I Broad	$41.09 \pm 0.06$	$6238 \pm 315$	$2649 \pm 133$	$15.81 \pm 1.00$
[O I] 6300	$40.48 \pm 0.03$	$266 \pm 62$	$112 \pm 25$	$4.32 \pm 0.21$
H $\alpha$ Narrow	$41.60 \pm 0.01$	$266 \pm 62$	$112 \pm 25$	$60.86 \pm 0.32$
<b>H<math>\alpha</math> Broad</b>	<b><math>42.37 \pm 0.01</math></b>	<b><math>4582 \pm 70</math></b>	<b><math>1849 \pm 41</math></b>	<b><math>354.97 \pm 1.59</math></b>
[N II] 6585	$41.36 \pm 0.01$	$266 \pm 62$	$112 \pm 25$	$35.11 \pm 0.30$
[S II] 6718	$40.92 \pm 0.01$	$266 \pm 62$	$112 \pm 25$	$12.94 \pm 0.30$
[S II] 6732	$40.75 \pm 0.03$	$266 \pm 62$	$112 \pm 25$	$8.84 \pm 0.37$

### Emission Summary

H $\alpha$ Broad SNR	18.80
H $\beta$ Broad SNR	5.96
H $\gamma$ Broad SNR	3.19
AGN frac	0.71
Host frac	0.29
$\log L_{5100, \text{Host}}$	43.30
Fe II/H $\beta$	0.35
Fe II/[O III]	0.40

### Quality Flags

spurious_hab/hbb	0/0
15100	0
balmer	0
balmer_snr	0
hb_width	0
balmer_width	0