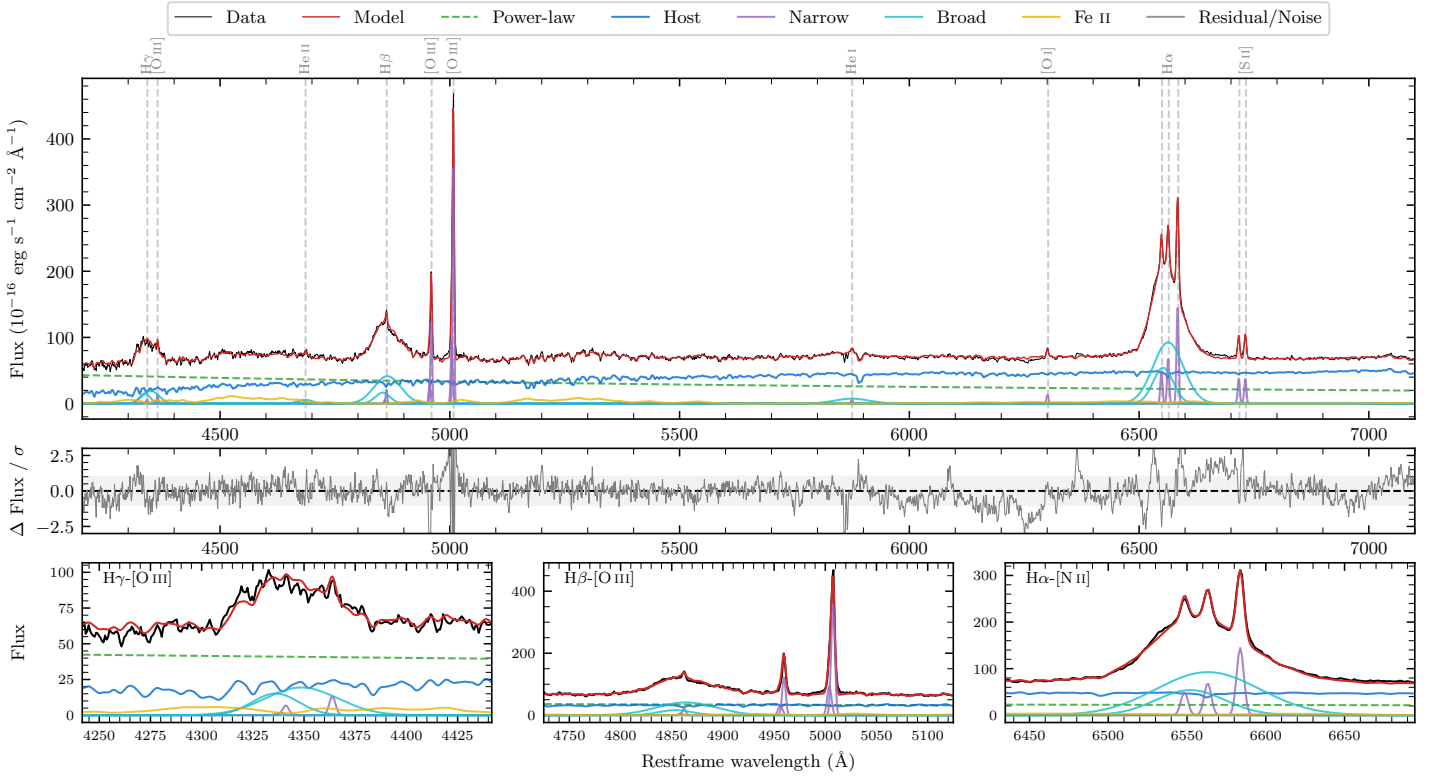
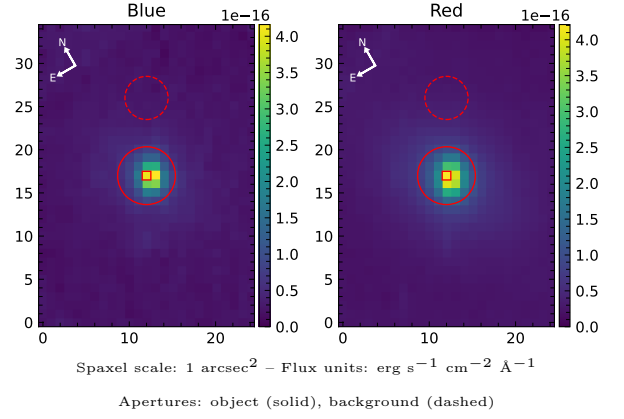


# NGC 6814

Spectrum ID	286051911_sp1	Spectrum Type	Sy 1.5
Alt name	g1942406-101925	Quality Flag	good
$z$	0.0054	AGN reference	6dFGS
RA, Dec	295.6691, -10.3236	MW $E(B - V)$	0.159
MJD	60163.53	Power law $\alpha_\nu$	$-0.51 \pm 0.16$
SNR/Å B/R	18.2/28.8	$\log L_{5100, \text{AGN}}$	$42.05 \pm 0.02$
Obs Airmass	1.07	$\log H\beta_{\text{Br}} / [\text{O III}]$	$0.23 \pm 0.02$
SMSS ID	286051911	$\log M_{L5100} / M_\odot$	$7.19 \pm 0.05$
Closest SMSS	5.52", 2399565663	$\log M_{\text{H}\alpha} / M_\odot$	$6.82 \pm 0.05$
SMSS Mean $r_{\text{psf}}$	$13.3 \pm 0.1$	$\log M_{\text{H}\beta} / M_\odot$	$7.23 \pm 0.07$
2MASS $K_{\text{ext}}$	$7.7 \pm 0.0$	$\log M_{[\text{O III}]} / M_\odot$	$7.22 \pm 0.07$



## Emission Line Measurements

Line	$\log L$ (erg s $^{-1}$ )	FWHM (km s $^{-1}$ )	$\sigma$ (km s $^{-1}$ )	EW (Å)
H $\gamma$ Narrow	$38.39 \pm 0.25$	$289 \pm 63$	$142 \pm 25$	$0.84 \pm 0.26$
<b>H<math>\gamma</math> Broad</b>	<b><math>39.93 \pm 0.10</math></b>	<b><math>2597 \pm 694</math></b>	<b><math>998 \pm 240</math></b>	<b><math>31.88 \pm 0.79</math></b>
[O III] 4364	$38.54 \pm 0.19$	$249 \pm 63$	$105 \pm 25$	$1.26 \pm 0.23$
He II Narrow	$38.15 \pm 0.27$	$249 \pm 63$	$105 \pm 25$	$0.58 \pm 0.19$
He II Broad	$39.18 \pm 0.24$	$2368 \pm 1012$	$1005 \pm 430$	$6.27 \pm 0.63$
H $\beta$ Narrow	$38.92 \pm 0.07$	$289 \pm 63$	$142 \pm 25$	$3.40 \pm 0.28$
<b>H<math>\beta</math> Broad</b>	<b><math>40.38 \pm 0.02</math></b>	<b><math>3667 \pm 141</math></b>	<b><math>1444 \pm 102</math></b>	<b><math>106.70 \pm 0.94</math></b>
[O III] 5007	$40.15 \pm 0.01$	$289 \pm 63$	$142 \pm 25$	$63.32 \pm 0.25$
He I Narrow	$38.32 \pm 0.21$	$249 \pm 63$	$105 \pm 25$	$1.18 \pm 0.30$
He I Broad	$39.67 \pm 0.10$	$4433 \pm 1415$	$1882 \pm 601$	$26.76 \pm 1.39$
[O I] 6300	$38.70 \pm 0.05$	$249 \pm 63$	$105 \pm 25$	$3.20 \pm 0.22$
H $\alpha$ Narrow	$39.42 \pm 0.03$	$249 \pm 63$	$105 \pm 25$	$17.93 \pm 0.38$
<b>H<math>\alpha</math> Broad</b>	<b><math>40.86 \pm 0.01</math></b>	<b><math>3199 \pm 80</math></b>	<b><math>1195 \pm 34</math></b>	<b><math>481.67 \pm 1.14</math></b>
[N II] 6585	$39.75 \pm 0.02$	$249 \pm 63$	$105 \pm 25$	$38.08 \pm 0.38$
[S II] 6718	$39.18 \pm 0.02$	$249 \pm 63$	$105 \pm 25$	$10.46 \pm 0.27$
[S II] 6732	$39.18 \pm 0.02$	$249 \pm 63$	$105 \pm 25$	$10.51 \pm 0.27$

## Emission Summary

H $\alpha$ Broad SNR	35.03
H $\beta$ Broad SNR	13.39
H $\gamma$ Broad SNR	7.36
AGN frac	0.50
Host frac	0.50
$\log L_{5100, \text{Host}}$	42.04
Fe II/H $\beta$	0.57
Fe II/[O III]	1.00

## Quality Flags

spurious_hab/hbb	0/0
15100	0
balmer	0
balmer_snr	0
hb_width	0
balmer_width	0