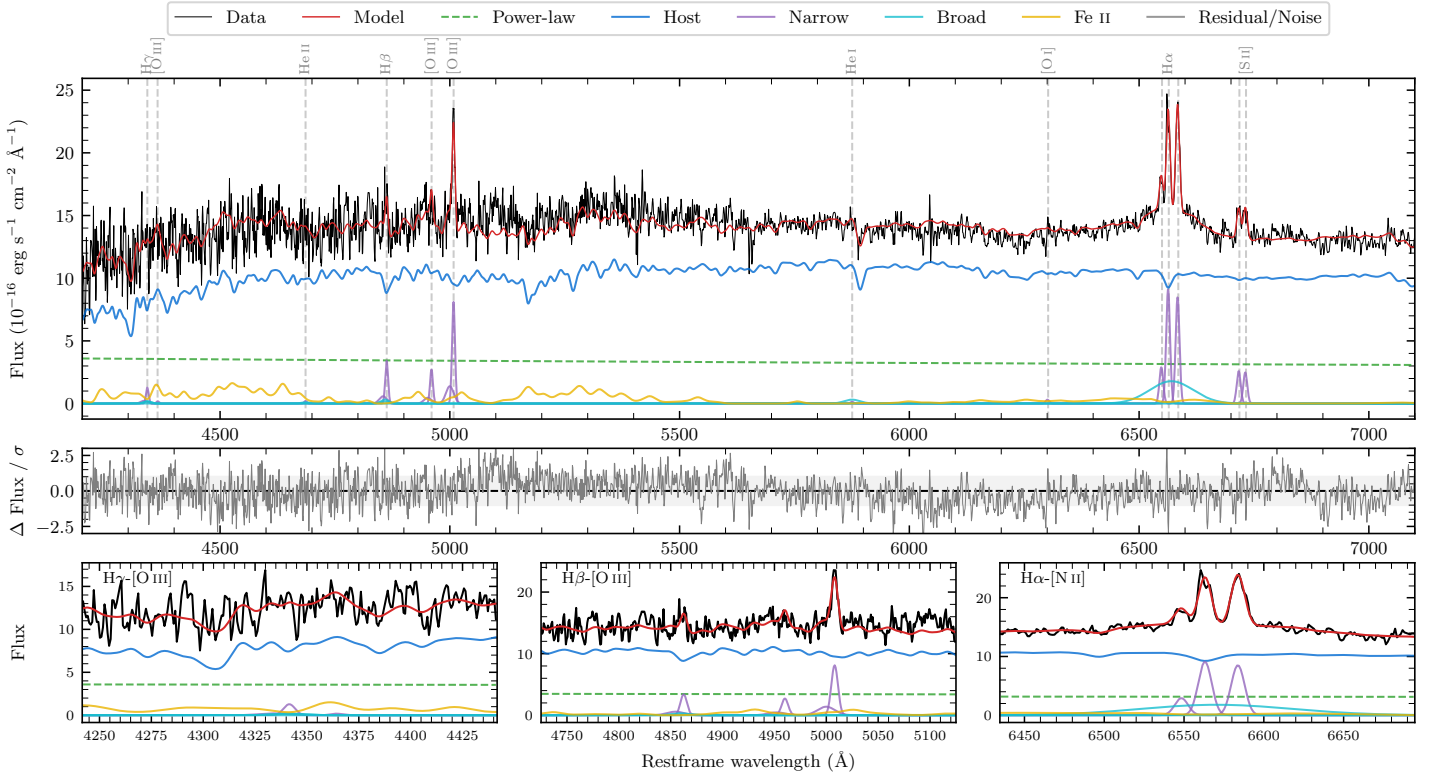
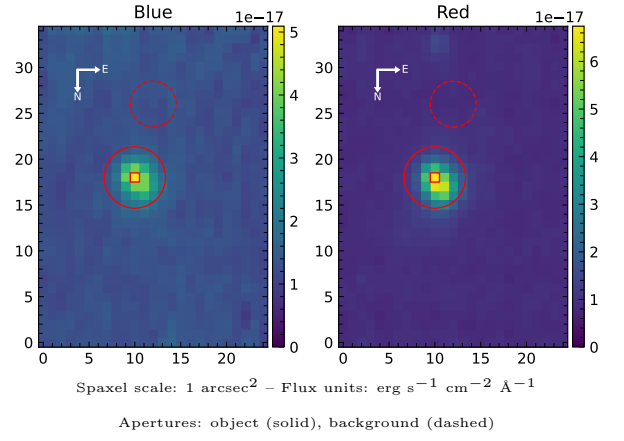


# 2MASX J17082222-0239476

Spectrum ID	200234826_sp1	Spectrum Type	Sy 1.5+
Alt name	g1708222-023948	Quality Flag	good
$z$	0.0424	AGN reference	6dFGS
RA, Dec	257.0925, -2.6633	MW $E(B - V)$	0.329
MJD	60162.45	Power law $\alpha_\nu$	$-1.70 \pm 0.05$
SNR/ $\text{\AA}$ B/R	11.5/21.4	$\log L_{5100, \text{AGN}}$	$42.86 \pm 0.02$
Obs Airmass	1.16	$\log H\beta_{\text{Br}}/[\text{O III}]$	$< 0.00$
SMSS ID	200234826	$\log M_{L5100}/M_\odot$	—
Closest SMSS	None $< 15''$	$\log M_{\text{H}\alpha}/M_\odot$	$7.26 \pm 0.06$
SMSS Mean $r_{\text{psf}}$	$16.2 \pm 0.1$	$\log M_{\text{H}\beta}/M_\odot$	—
2MASS $K_{\text{ext}}$	$12.3 \pm 0.1$	$\log M_{[\text{O III}]} / M_\odot$	—



## Emission Line Measurements

Line	$\log L$ (erg s $^{-1}$ )	FWHM (km s $^{-1}$ )	$\sigma$ (km s $^{-1}$ )	EW ( $\text{\AA}$ )
H $\gamma$ Narrow	$39.75 \pm 0.29$	$489 \pm 64$	$392 \pm 41$	$3.78 \pm 1.75$
<b>H<math>\gamma</math> Broad</b>	—	—	—	—
[O III] 4364	—	—	—	—
He II Narrow	—	—	—	—
He II Broad	—	—	—	—
H $\beta$ Narrow	$40.22 \pm 0.11$	$489 \pm 64$	$392 \pm 41$	$11.60 \pm 1.51$
<b>H<math>\beta</math> Broad</b>	$< 40.60$	—	—	—
[O III] 5007	$40.62 \pm 0.04$	$489 \pm 64$	$392 \pm 41$	$28.69 \pm 1.59$
He I Narrow	—	—	—	—
He I Broad	$39.78 \pm 0.25$	$2058 \pm 62$	$874 \pm 25$	$4.33 \pm 1.26$
[O I] 6300	$39.14 \pm 0.39$	$453 \pm 62$	$191 \pm 25$	$1.03 \pm 0.70$
H $\alpha$ Narrow	$40.63 \pm 0.02$	$453 \pm 62$	$191 \pm 25$	$31.68 \pm 0.74$
<b>H<math>\alpha</math> Broad</b>	<b><math>40.98 \pm 0.03</math></b>	<b><math>4896 \pm 190</math></b>	<b><math>1862 \pm 25</math></b>	<b><math>71.24 \pm 2.31</math></b>
[N II] 6585	$40.60 \pm 0.02$	$453 \pm 62$	$191 \pm 25$	$29.70 \pm 0.80$
[S II] 6718	$40.09 \pm 0.05$	$453 \pm 62$	$191 \pm 25$	$9.29 \pm 0.67$
[S II] 6732	$40.07 \pm 0.05$	$453 \pm 62$	$191 \pm 25$	$8.92 \pm 0.66$

## Emission Summary

H $\alpha$ Broad SNR	1.63
H $\beta$ Broad SNR	0.60
H $\gamma$ Broad SNR	0.00
AGN frac	0.25
Host frac	0.75
$\log L_{5100, \text{Host}}$	43.33
Fe II/H $\beta$	—
Fe II/[O III]	3.44

## Quality Flags

spurious_hab/hbb	0/0
15100	1
balmer	2
balmer_snr	2
hb_width	2
balmer_width	2