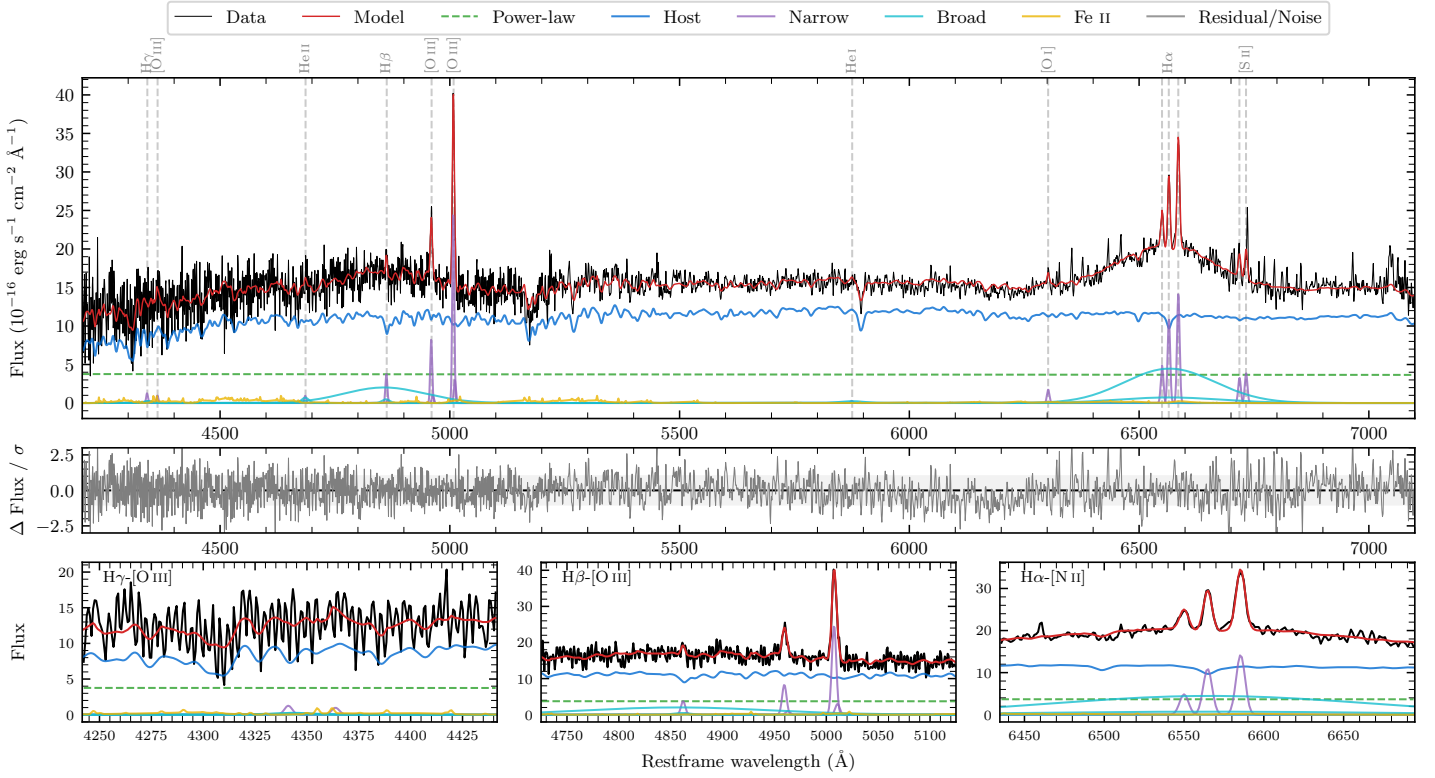
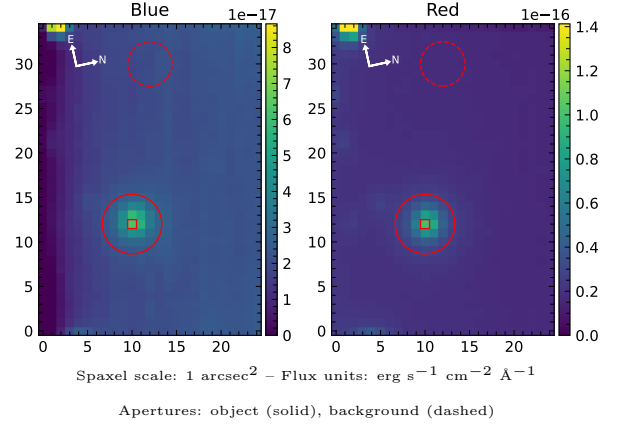


6dFGS gJ170056.7-030646

| | | | |
|----------------------------|-------------------|--|------------------|
| Spectrum ID | 195000846_sp1 | Spectrum Type | Sy 1.2 |
| Alt name | g1700567-030646 | Quality Flag | good |
| z | 0.0800 | AGN reference | 6dFGS |
| RA, Dec | 255.2363, -3.1129 | MW $E(B - V)$ | 0.284 |
| MJD | 59725.65 | Power law α_ν | -1.94 ± 0.06 |
| SNR/ \AA B/R | 9.0/18.0 | $\log L_{5100, \text{AGN}}$ | 43.48 ± 0.05 |
| Obs Airmass | 1.15 | $\log H\beta_{\text{Br}}/[\text{O III}]$ | 0.49 ± 0.05 |
| SMSS ID | 195000846 | $\log M_{L5100}/M_\odot$ | 8.73 ± 0.15 |
| Closest SMSS | None $< 15''$ | $\log M_{\text{H}\alpha}/M_\odot$ | 8.79 ± 0.02 |
| SMSS Mean r_{psf} | 17.0 ± 0.1 | $\log M_{\text{H}\beta}/M_\odot$ | 8.84 ± 0.15 |
| 2MASS K_{ext} | 12.5 ± 0.1 | $\log M_{[\text{O III}]} / M_\odot$ | 8.76 ± 0.15 |



Emission Line Measurements

| Line | $\log L$ (erg s $^{-1}$) | FWHM (km s $^{-1}$) | σ (km s $^{-1}$) | EW (A) |
|-----------------------------------|------------------------------------|------------------------------------|---------------------------------|-------------------------------------|
| H γ Narrow | 40.05 ± 0.41 | 325 ± 63 | 142 ± 26 | 1.89 ± 1.25 |
| Hγ Broad | — | — | — | — |
| [O III] 4364 | 39.89 ± 0.44 | 305 ± 62 | 128 ± 25 | 1.32 ± 1.19 |
| He II Narrow | 39.91 ± 0.44 | 305 ± 62 | 128 ± 25 | 1.37 ± 1.02 |
| He II Broad | 40.37 ± 0.36 | 1178 ± 62 | 500 ± 25 | 3.94 ± 2.06 |
| H β Narrow | 40.57 ± 0.15 | 325 ± 63 | 142 ± 26 | 6.34 ± 1.10 |
| Hβ Broad | 41.90 ± 0.05 | 10619 ± 1810 | 4673 ± 48 | 132.08 ± 7.68 |
| [O III] 5007 | 41.41 ± 0.02 | 325 ± 63 | 142 ± 26 | 43.18 ± 1.29 |
| He I Narrow | — | — | — | — |
| He I Broad | 40.45 ± 0.31 | 3239 ± 63 | 1376 ± 25 | 4.86 ± 1.99 |
| [O I] 6300 | 40.31 ± 0.12 | 305 ± 62 | 128 ± 25 | 3.47 ± 0.57 |
| H α Narrow | 41.12 ± 0.02 | 305 ± 62 | 128 ± 25 | 22.57 ± 0.68 |
| Hα Broad | 42.35 ± 0.01 | 10814 ± 164 | 4038 ± 74 | 386.19 ± 5.12 |
| [N II] 6585 | 41.23 ± 0.02 | 305 ± 62 | 128 ± 25 | 29.51 ± 0.66 |
| [S II] 6718 | 40.61 ± 0.08 | 305 ± 62 | 128 ± 25 | 6.98 ± 0.85 |
| [S II] 6732 | 40.68 ± 0.07 | 305 ± 62 | 128 ± 25 | 8.26 ± 0.91 |

Emission Summary

| | |
|------------------------------|-------|
| H α Broad SNR | 3.22 |
| H β Broad SNR | 1.58 |
| H γ Broad SNR | 0.42 |
| AGN frac | 0.26 |
| Host frac | 0.74 |
| $\log L_{5100, \text{Host}}$ | 43.93 |
| Fe II/H β | 0.24 |
| Fe II/[O III] | 0.73 |

Quality Flags

| | |
|------------------|-----|
| spurious_hab/hbb | 0/0 |
| 15100 | 1 |
| balmer | 1 |
| balmer_snr | 2 |
| hb_width | 0 |
| balmer_width | 1 |