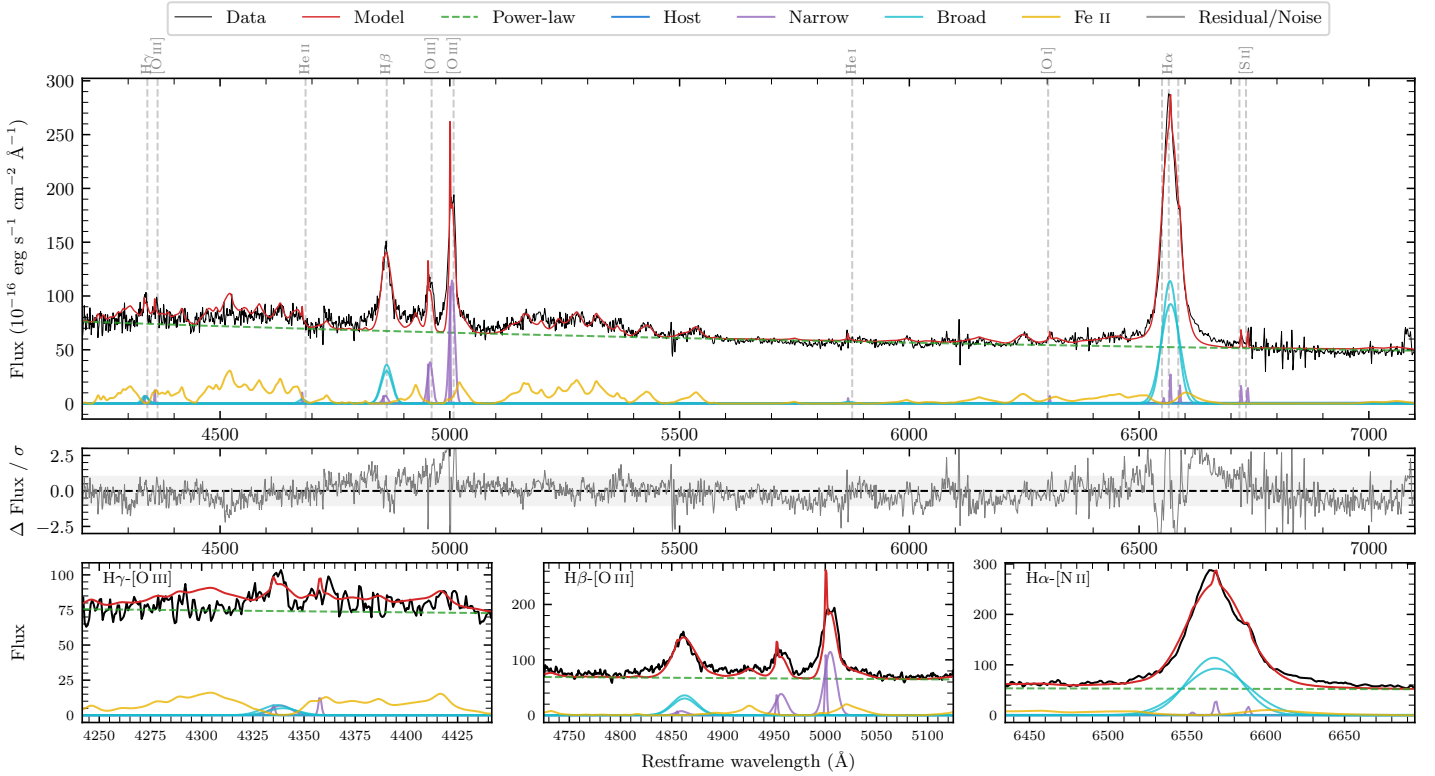
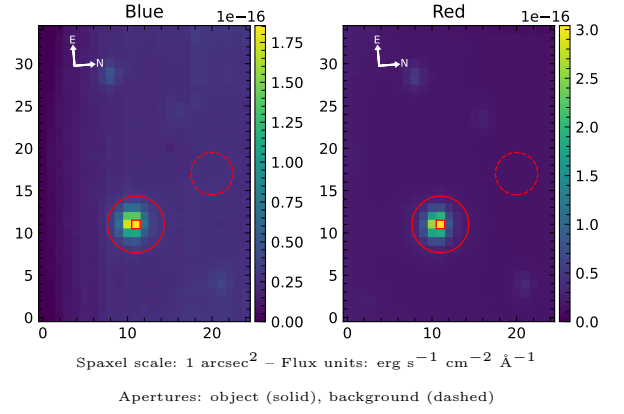


IRAS 16433-1118

Spectrum ID	192952618_sp1	Spectrum Type	Sy 1.5
Alt name	g1646104-112404	Quality Flag	good
z	0.0734	AGN reference	6dFGS
RA, Dec	251.5433, -11.4012	MW $E(B-V)$	0.500
MJD	59725.63	Power law α_ν	-1.17 ± 0.04
SNR/Å B/R	8.5/13.0	$\log L_{5100, \text{AGN}}$	44.65 ± 0.01
Obs Airmass	1.07	$\log H\beta_{\text{Br}} / [\text{O III}]$	0.02 ± 0.03
SMSS ID	192952618	$\log M_{L5100} / M_\odot$	7.65 ± 0.02
Closest SMSS	12.30", 192952617	$\log M_{\text{H}\alpha} / M_\odot$	7.78 ± 0.05
SMSS Mean r_{psf}	16.0 ± 0.0	$\log M_{\text{H}\beta} / M_\odot$	7.51 ± 0.02
2MASS K_{ext}	nan \pm nan	$\log M_{[\text{O III}]} / M_\odot$	7.69 ± 0.03



Emission Line Measurements

Line	$\log L$ (erg s $^{-1}$)	FWHM (km s $^{-1}$)	σ (km s $^{-1}$)	EW (Å)
H γ Narrow	41.16 ± 0.37	540 ± 68	331 ± 29	1.44 ± 0.52
Hγ Broad	41.59 ± 0.19	1203 ± 64	432 ± 25	3.24 ± 0.65
[O III] 4364	40.57 ± 0.34	124 ± 62	51 ± 25	0.37 ± 0.20
He II Narrow	40.49 ± 0.38	124 ± 62	51 ± 25	0.33 ± 0.18
He II Broad	41.06 ± 0.33	1182 ± 63	502 ± 25	1.24 ± 0.58
H β Narrow	41.24 ± 0.29	540 ± 68	331 ± 29	1.88 ± 0.51
Hβ Broad	42.45 ± 0.03	1716 ± 28	616 ± 25	31.21 ± 0.76
[O III] 5007	42.44 ± 0.02	540 ± 68	331 ± 29	30.72 ± 0.56
He I Narrow	40.27 ± 0.39	124 ± 62	51 ± 25	0.24 ± 0.13
He I Broad	40.80 ± 0.31	1187 ± 63	504 ± 25	0.81 ± 0.37
[O I] 6300	40.44 ± 0.24	124 ± 62	51 ± 25	0.38 ± 0.12
H α Narrow	41.09 ± 0.09	124 ± 62	51 ± 25	1.71 ± 0.20
Hα Broad	43.14 ± 0.01	1957 ± 69	736 ± 25	195.16 ± 0.70
[N II] 6585	40.84 ± 0.14	124 ± 62	51 ± 25	0.98 ± 0.16
[S II] 6718	40.85 ± 0.12	124 ± 62	51 ± 25	1.00 ± 0.13
[S II] 6732	40.81 ± 0.13	124 ± 62	51 ± 25	0.91 ± 0.17

Emission Summary

H α Broad SNR	24.59
H β Broad SNR	7.93
H γ Broad SNR	1.73
AGN frac	1.00
Host frac	0.00
$\log L_{5100, \text{Host}}$	42.29
Fe II/H β	2.24
Fe II/[O III]	2.33

Quality Flags

spurious_hab/hbb	0/0
15100	0
balmer	0
balmer_snr	1
hb_width	0
balmer_width	2