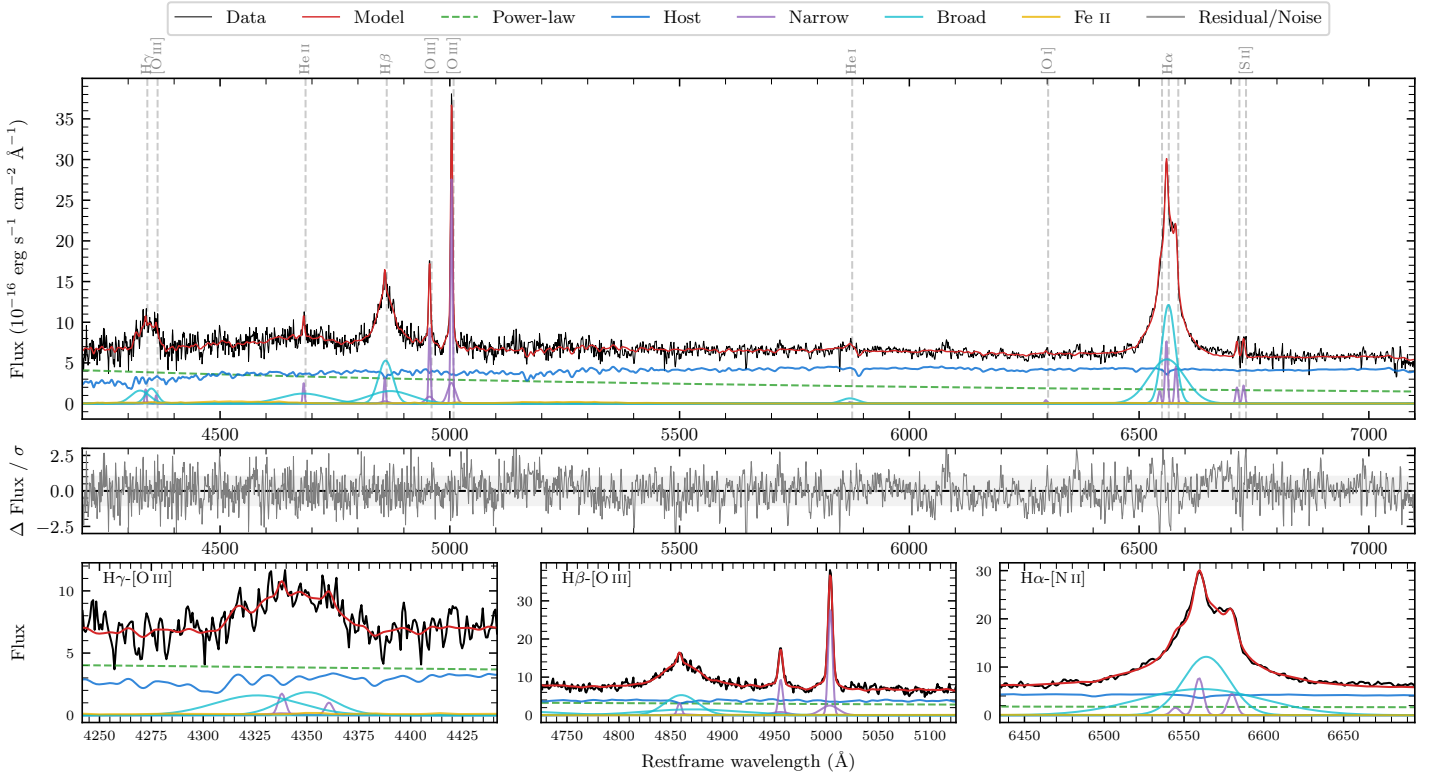
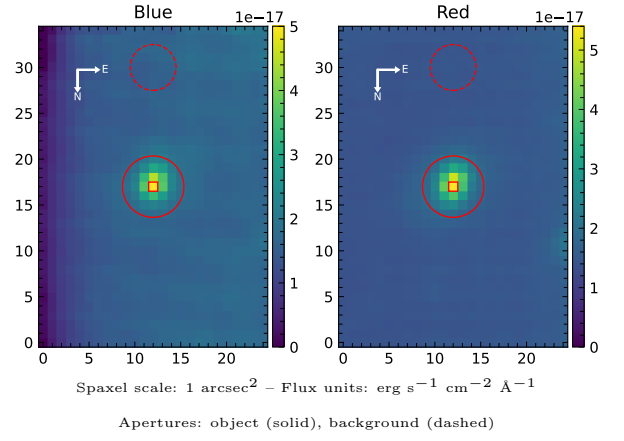


## 2MASS J16161077-1014059

Spectrum ID	192188594_sp3	Spectrum Type	Sy 1.5
Alt name	g1616108-101406	Quality Flag	good
$z$	0.0766	AGN reference	6dFGS
RA, Dec	244.0449, -10.2350	MW $E(B - V)$	0.234
MJD	60414.57	Power law $\alpha_\nu$	$-0.07 \pm 0.31$
SNR/ $\text{\AA}$ B/R	10.8/13.6	$\log L_{5100, \text{AGN}}$	$43.33 \pm 0.05$
Obs Airmass	1.49	$\log H\beta_{\text{Br}}/[\text{O III}]$	$0.29 \pm 0.02$
SMSS ID	192188594	$\log M_{L5100}/M_\odot$	$7.48 \pm 0.04$
Closest SMSS	13.95", 192188595	$\log M_{\text{H}\alpha}/M_\odot$	$7.20 \pm 0.03$
SMSS Mean $r_{\text{psf}}$	$17.3 \pm 0.1$	$\log M_{\text{H}\beta}/M_\odot$	$7.61 \pm 0.04$
2MASS $K_{\text{ext}}$	$12.6 \pm 0.1$	$\log M_{[\text{O III}]} / M_\odot$	$7.63 \pm 0.03$



### Emission Line Measurements

Line	$\log L$ (erg s $^{-1}$ )	FWHM (km s $^{-1}$ )	$\sigma$ (km s $^{-1}$ )	EW ( $\text{\AA}$ )
H $\gamma$ Narrow	$40.24 \pm 0.13$	$320 \pm 63$	$281 \pm 34$	$3.05 \pm 0.97$
<b>H<math>\gamma</math> Broad</b>	<b><math>41.35 \pm 0.03</math></b>	<b><math>3481 \pm 299</math></b>	<b><math>1273 \pm 49</math></b>	<b><math>39.25 \pm 1.56</math></b>
[O III] 4364	$39.87 \pm 0.23$	$299 \pm 63$	$126 \pm 25$	$1.33 \pm 0.46$
He II Narrow	$40.30 \pm 0.08$	$299 \pm 63$	$126 \pm 25$	$4.06 \pm 0.49$
He II Broad	$41.39 \pm 0.04$	$7592 \pm 336$	$3224 \pm 143$	$50.30 \pm 2.70$
H $\beta$ Narrow	$40.55 \pm 0.07$	$320 \pm 63$	$281 \pm 34$	$7.77 \pm 0.98$
<b>H<math>\beta</math> Broad</b>	<b><math>41.79 \pm 0.01</math></b>	<b><math>2715 \pm 100</math></b>	<b><math>1444 \pm 67</math></b>	<b><math>136.28 \pm 2.67</math></b>
[O III] 5007	$41.51 \pm 0.01$	$320 \pm 63$	$281 \pm 34$	$74.23 \pm 1.09$
He I Narrow	$39.27 \pm 0.41$	$299 \pm 63$	$126 \pm 25$	$0.59 \pm 0.57$
He I Broad	$40.68 \pm 0.08$	$2200 \pm 203$	$934 \pm 86$	$14.83 \pm 1.63$
[O I] 6300	$39.65 \pm 0.22$	$299 \pm 63$	$126 \pm 25$	$1.62 \pm 0.55$
H $\alpha$ Narrow	$40.93 \pm 0.02$	$299 \pm 63$	$126 \pm 25$	$33.33 \pm 0.80$
<b>H<math>\alpha</math> Broad</b>	<b><math>42.19 \pm 0.01</math></b>	<b><math>1949 \pm 69</math></b>	<b><math>1010 \pm 25</math></b>	<b><math>602.33 \pm 2.99</math></b>
[N II] 6585	$40.70 \pm 0.03$	$299 \pm 63$	$126 \pm 25$	$19.81 \pm 0.80$
[S II] 6718	$40.35 \pm 0.06$	$299 \pm 63$	$126 \pm 25$	$9.18 \pm 1.06$
[S II] 6732	$40.40 \pm 0.06$	$299 \pm 63$	$126 \pm 25$	$10.39 \pm 1.16$

### Emission Summary

H $\alpha$ Broad SNR	24.95
H $\beta$ Broad SNR	9.64
H $\gamma$ Broad SNR	3.87
AGN frac	0.43
Host frac	0.57
$\log L_{5100, \text{Host}}$	43.45
Fe II/H $\beta$	0.15
Fe II/[O III]	0.29

### Quality Flags

spurious_hab/hbb	0/0
15100	1
balmer	0
balmer_snr	0
hb_width	1
balmer_width	0