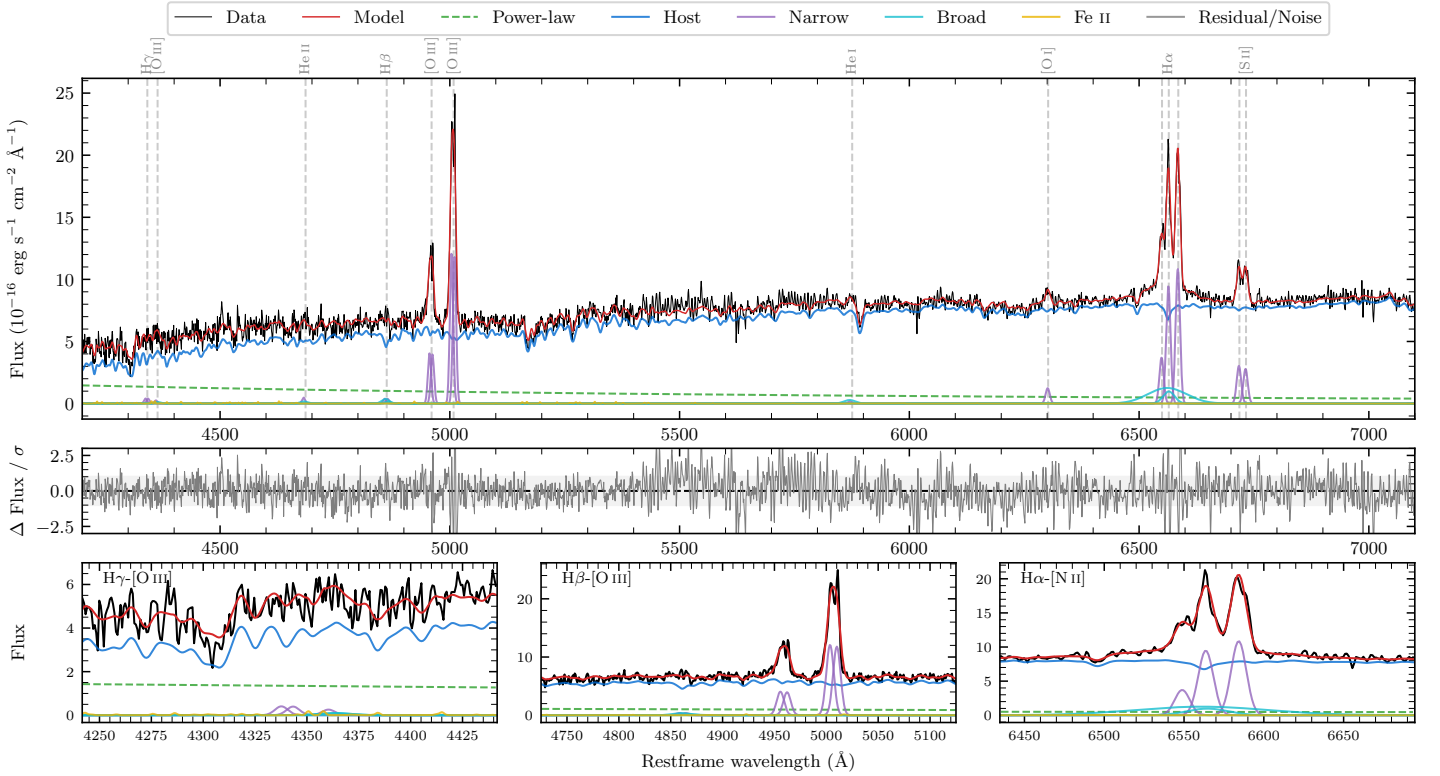
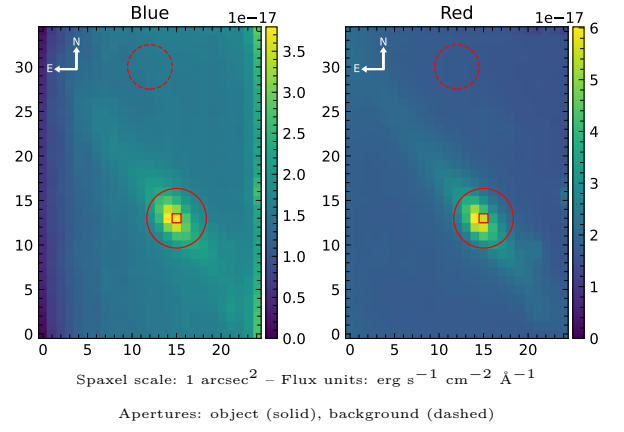


LEDA 92482

Spectrum ID	121072463_sp2	Spectrum Type	Sy 1.8
Alt name	g1608033-283448	Quality Flag	good
z	0.0479	AGN reference	6dFGS
RA, Dec	242.0136, -28.5799	MW $E(B - V)$	0.163
MJD	59671.68	Power law α_ν	0.48 ± 0.02
SNR/ \AA B/R	10.1/22.8	$\log L_{5100, \text{AGN}}$	42.39 ± 0.16
Obs Airmass	1.03	$\log H\beta_{\text{Br}}/[\text{O III}]$	-1.19 ± 0.24
SMSS ID	121072463	$\log M_{L5100}/M_\odot$	6.38 ± 0.08
Closest SMSS	10.74", 121072462	$\log M_{\text{H}\alpha}/M_\odot$	6.66 ± 0.15
SMSS Mean r_{psf}	16.5 ± 0.1	$\log M_{\text{H}\beta}/M_\odot$	6.05 ± 0.13
2MASS K_{ext}	11.8 ± 0.1	$\log M_{[\text{O III}]} / M_\odot$	6.72 ± 0.03



Emission Line Measurements

Line	$\log L$ (erg s $^{-1}$)	FWHM (km s $^{-1}$)	σ (km s $^{-1}$)	EW (\AA)
H γ Narrow	39.55 ± 0.29	798 ± 62	291 ± 25	4.92 ± 1.69
Hγ Broad	—	—	—	—
[O III] 4364	39.06 ± 0.47	512 ± 62	216 ± 25	1.61 ± 1.51
He II Narrow	39.35 ± 0.33	512 ± 62	216 ± 25	3.81 ± 1.62
He II Broad	39.29 ± 0.46	1197 ± 62	508 ± 25	3.27 ± 2.46
H β Narrow	39.57 ± 0.36	798 ± 62	291 ± 25	6.92 ± 1.83
Hβ Broad	39.89 ± 0.24	1211 ± 32	456 ± 25	10.97 ± 2.61
[O III] 5007	41.08 ± 0.01	798 ± 62	291 ± 25	239.48 ± 2.16
He I Narrow	39.00 ± 0.45	512 ± 62	216 ± 25	2.94 ± 1.76
He I Broad	39.70 ± 0.20	1499 ± 62	636 ± 25	14.67 ± 3.09
[O I] 6300	39.90 ± 0.06	512 ± 62	216 ± 25	27.66 ± 2.29
H α Narrow	40.80 ± 0.02	512 ± 62	216 ± 25	243.48 ± 3.21
Hα Broad	40.96 ± 0.03	2495 ± 391	1392 ± 48	350.70 ± 8.07
[N II] 6585	40.86 ± 0.01	512 ± 62	216 ± 25	282.19 ± 3.14
[S II] 6718	40.31 ± 0.03	512 ± 62	216 ± 25	84.80 ± 2.90
[S II] 6732	40.28 ± 0.03	512 ± 62	216 ± 25	78.32 ± 2.95

Emission Summary

H α Broad SNR	3.59
H β Broad SNR	1.07
H γ Broad SNR	0.43
AGN frac	0.14
Host frac	0.86
$\log L_{5100, \text{Host}}$	43.18
Fe II/H β	—
Fe II/[O III]	—

Quality Flags

spurious_hab/hbb	0/0
15100	2
balmer	1
balmer_snr	2
hb_width	0
balmer_width	2