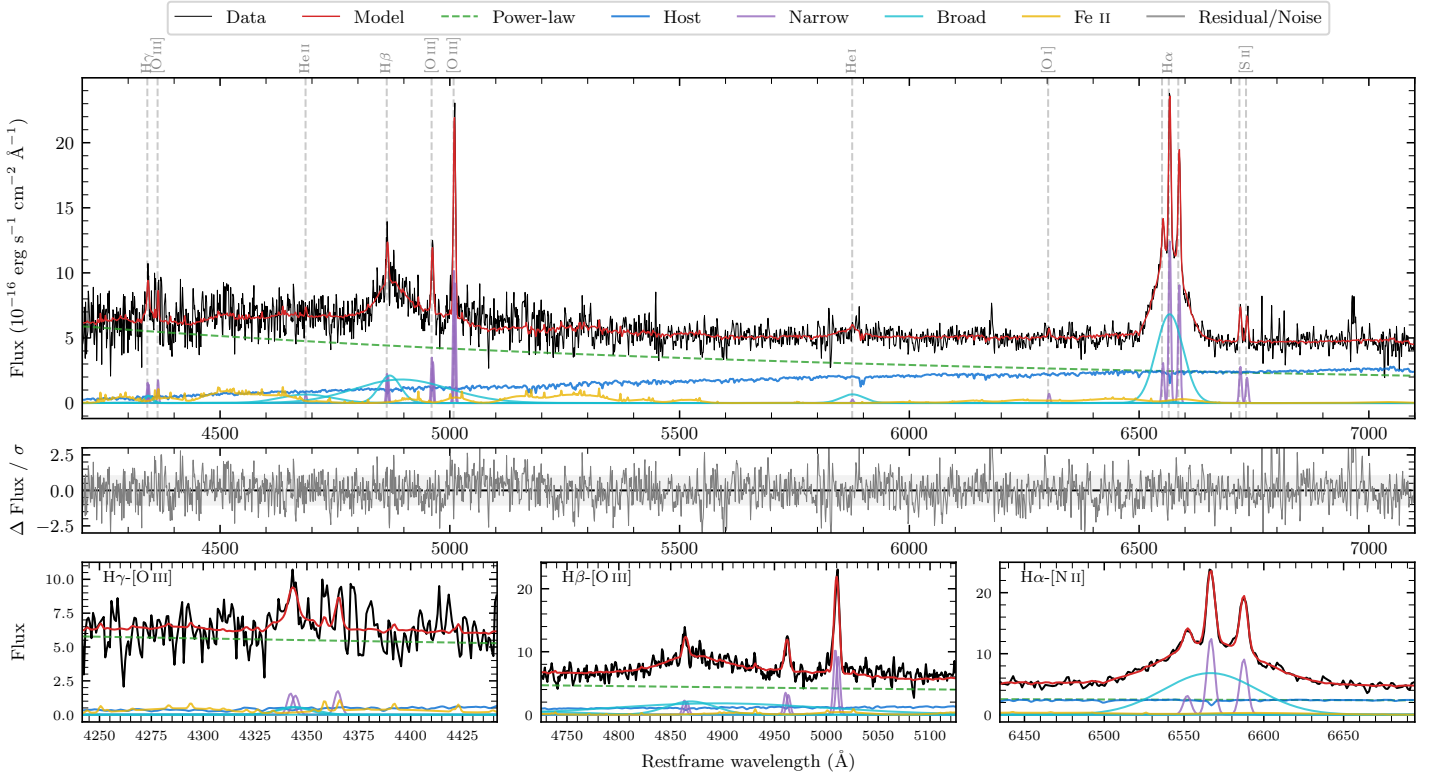
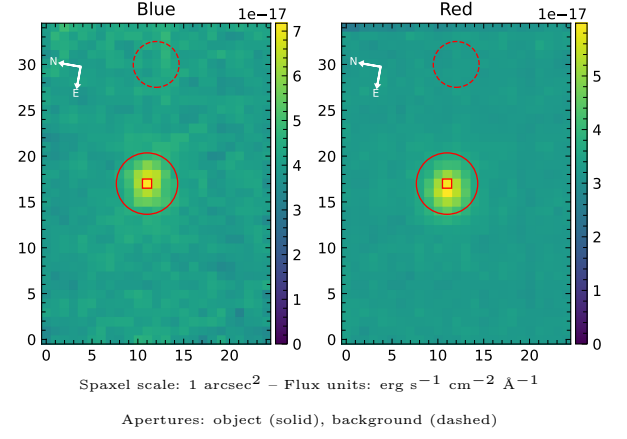


# 6dFGS gJ155703.2-074134

Spectrum ID	169906444_sp1	Spectrum Type	Sy 1.0
Alt name	g1557032-074134	Quality Flag	good
$z$	0.0816	AGN reference	6dFGS
RA, Dec	239.2633, -7.6927	MW $E(B - V)$	0.151
MJD	60077.68	Power law $\alpha_\nu$	$-0.03 \pm 0.20$
SNR/Å B/R	6.8/9.3	$\log L_{5100, \text{AGN}}$	$43.53 \pm 0.03$
Obs Airmass	1.19	$\log H\beta_{\text{Br}}/[\text{O III}]$	$0.80 \pm 0.03$
SMSS ID	169906444	$\log M_{L5100}/M_\odot$	$8.21 \pm 0.10$
Closest SMSS	None < 15"	$\log M_{\text{H}\alpha}/M_\odot$	$7.46 \pm 0.02$
SMSS Mean $r_{\text{psf}}$	$16.3 \pm 0.0$	$\log M_{\text{H}\beta}/M_\odot$	$8.35 \pm 0.10$
2MASS $K_{\text{ext}}$	$12.8 \pm 0.1$	$\log M_{[\text{O III}]} / M_\odot$	$8.12 \pm 0.10$



## Emission Line Measurements

Line	$\log L$ (erg s $^{-1}$ )	FWHM (km s $^{-1}$ )	$\sigma$ (km s $^{-1}$ )	EW (Å)
H $\gamma$ Narrow	$40.33 \pm 0.18$	$349 \pm 64$	$137 \pm 25$	$2.38 \pm 0.44$
<b>H<math>\gamma</math> Broad</b>	<b><math>40.69 \pm 0.16</math></b>	<b><math>1343 \pm 113</math></b>	<b><math>514 \pm 39</math></b>	<b><math>4.49 \pm 0.97</math></b>
[O III] 4364	$40.10 \pm 0.21$	$265 \pm 63$	$112 \pm 25$	$1.41 \pm 0.42$
He II Narrow	$39.75 \pm 0.35$	$265 \pm 63$	$112 \pm 25$	$0.73 \pm 0.43$
He II Broad	$41.22 \pm 0.09$	$8591 \pm 66$	$3648 \pm 27$	$21.41 \pm 2.62$
H $\beta$ Narrow	$40.54 \pm 0.09$	$349 \pm 64$	$137 \pm 25$	$4.82 \pm 0.49$
<b>H<math>\beta</math> Broad</b>	<b><math>42.02 \pm 0.02</math></b>	<b><math>5662 \pm 600</math></b>	<b><math>4458 \pm 85</math></b>	<b><math>145.83 \pm 3.95</math></b>
[O III] 5007	$41.22 \pm 0.02$	$349 \pm 64$	$137 \pm 25$	$24.08 \pm 0.58$
He I Narrow	$39.44 \pm 0.42$	$265 \pm 63$	$112 \pm 25$	$0.56 \pm 0.44$
He I Broad	$40.88 \pm 0.08$	$3057 \pm 71$	$1298 \pm 29$	$15.11 \pm 1.62$
[O I] 6300	$39.87 \pm 0.19$	$265 \pm 63$	$112 \pm 25$	$1.72 \pm 0.48$
H $\alpha$ Narrow	$41.13 \pm 0.02$	$265 \pm 63$	$112 \pm 25$	$34.00 \pm 0.60$
<b>H<math>\alpha</math> Broad</b>	<b><math>41.95 \pm 0.01</math></b>	<b><math>3101 \pm 81</math></b>	<b><math>1147 \pm 25</math></b>	<b><math>223.98 \pm 2.13</math></b>
[N II] 6585	$41.00 \pm 0.02$	$265 \pm 63$	$112 \pm 25$	$24.88 \pm 0.60$
[S II] 6718	$40.49 \pm 0.05$	$265 \pm 63$	$112 \pm 25$	$8.09 \pm 0.73$
[S II] 6732	$40.34 \pm 0.08$	$265 \pm 63$	$112 \pm 25$	$5.73 \pm 0.77$

## Emission Summary

H $\alpha$ Broad SNR	7.51
H $\beta$ Broad SNR	4.15
H $\gamma$ Broad SNR	1.40
AGN frac	0.77
Host frac	0.23
$\log L_{5100, \text{Host}}$	43.00
Fe II/H $\beta$	0.33
Fe II/[O III]	2.08

## Quality Flags

spurious_hab/hbb	0/0
15100	0
balmer	2
balmer_snr	1
hb_width	2
balmer_width	1