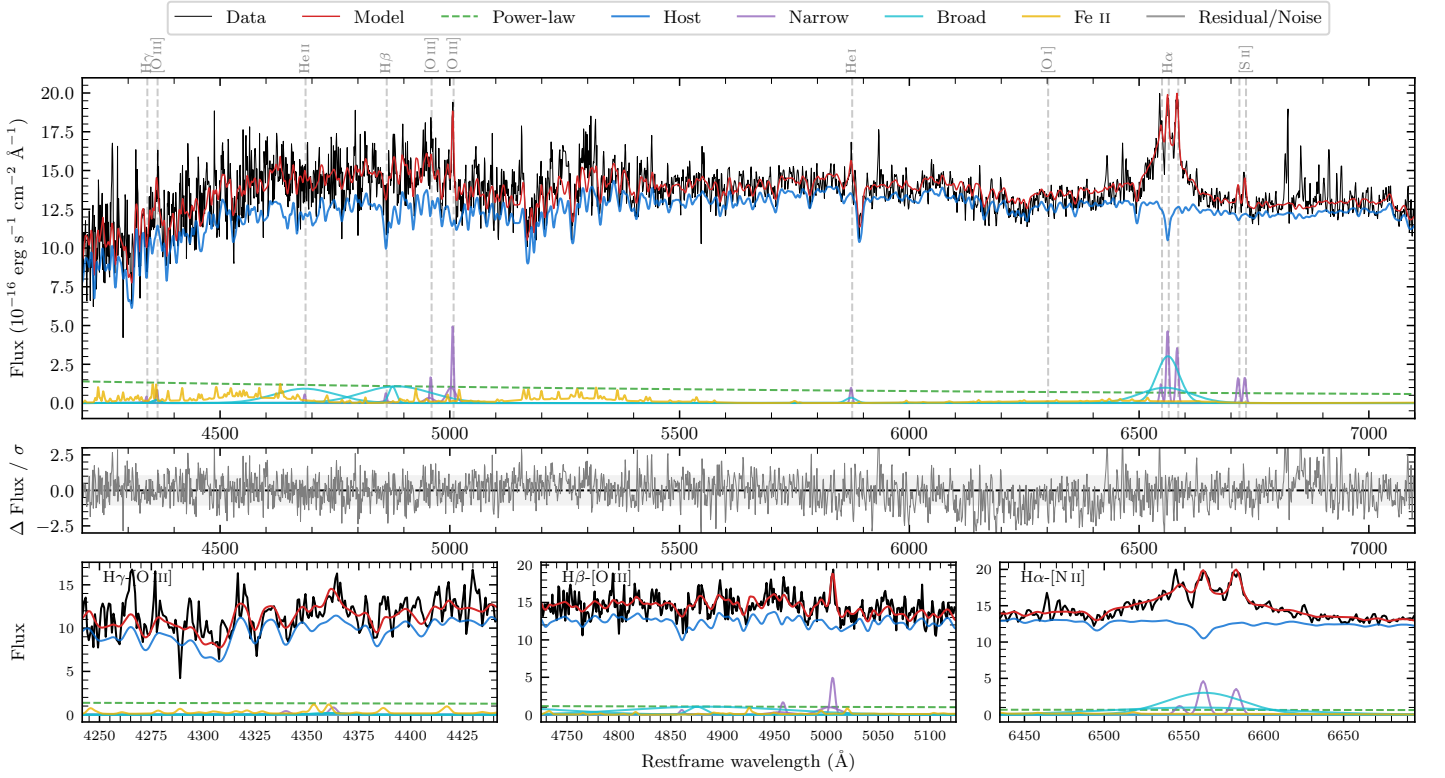
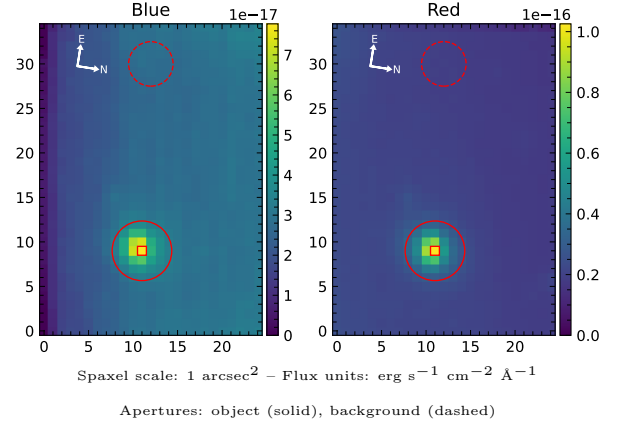


6dFGS gJ155625.3-202829

Spectrum ID	167632502_sp2	Spectrum Type	Sy 1.2
Alt name	g1556253-202829	Quality Flag	good
z	0.0613	AGN reference	6dFGS
RA, Dec	239.1054, -20.4746	MW $E(B - V)$	0.214
MJD	59725.59	Power law α_ν	-0.33 ± 0.40
SNR/ \AA B/R	10.6/22.1	$\log L_{5100, \text{AGN}}$	42.67 ± 0.08
Obs Airmass	1.02	$\log H\beta_{\text{Br}}/[\text{O III}]$	0.64 ± 0.10
SMSS ID	167632502	$\log M_{L5100}/M_\odot$	7.21 ± 0.54
Closest SMSS	None $< 15''$	$\log M_{\text{H}\alpha}/M_\odot$	7.17 ± 0.04
SMSS Mean r_{psf}	16.5 ± 0.1	$\log M_{\text{H}\beta}/M_\odot$	7.41 ± 0.54
2MASS K_{ext}	12.7 ± 0.1	$\log M_{[\text{O III}]} / M_\odot$	7.24 ± 0.54



Emission Line Measurements

Line	$\log L$ (erg s ⁻¹)	FWHM (km s ⁻¹)	σ (km s ⁻¹)	EW (Å)
H γ Narrow	—	—	—	—
Hγ Broad	—	—	—	—
[O III] 4364	39.58 ± 0.44	301 ± 63	128 ± 25	3.22 ± 2.66
He II Narrow	39.43 ± 0.45	301 ± 63	128 ± 25	2.55 ± 2.54
He II Broad	41.18 ± 0.08	10038 ± 64	4263 ± 26	141.16 ± 15.55
H β Narrow	39.80 ± 0.38	342 ± 68	438 ± 64	6.25 ± 5.56
Hβ Broad	41.34 ± 0.06	2739 ± 1768	3626 ± 98	220.17 ± 17.21
[O III] 5007	40.70 ± 0.08	342 ± 68	439 ± 64	52.86 ± 6.07
He I Narrow	39.78 ± 0.22	301 ± 63	128 ± 25	8.25 ± 1.97
He I Broad	39.98 ± 0.27	1369 ± 63	581 ± 25	13.10 ± 4.14
[O I] 6300	—	—	—	—
H α Narrow	40.50 ± 0.05	301 ± 63	128 ± 25	51.90 ± 2.81
Hα Broad	41.50 ± 0.02	3066 ± 129	1382 ± 71	517.26 ± 11.25
[N II] 6585	40.38 ± 0.05	301 ± 63	128 ± 25	40.14 ± 2.56
[S II] 6718	40.05 ± 0.09	301 ± 63	128 ± 25	19.31 ± 2.47
[S II] 6732	40.06 ± 0.09	301 ± 63	128 ± 25	19.77 ± 2.59

Emission Summary

H α Broad SNR	3.30
H β Broad SNR	1.75
H γ Broad SNR	0.44
AGN frac	0.08
Host frac	0.92
$\log L_{5100, \text{Host}}$	43.75
Fe II/H β	0.61
Fe II/[O III]	2.64

Quality Flags

spurious_hab/hbb	0/0
15100	2
balmer	1
balmer_snr	2
hb_width	2
balmer_width	1