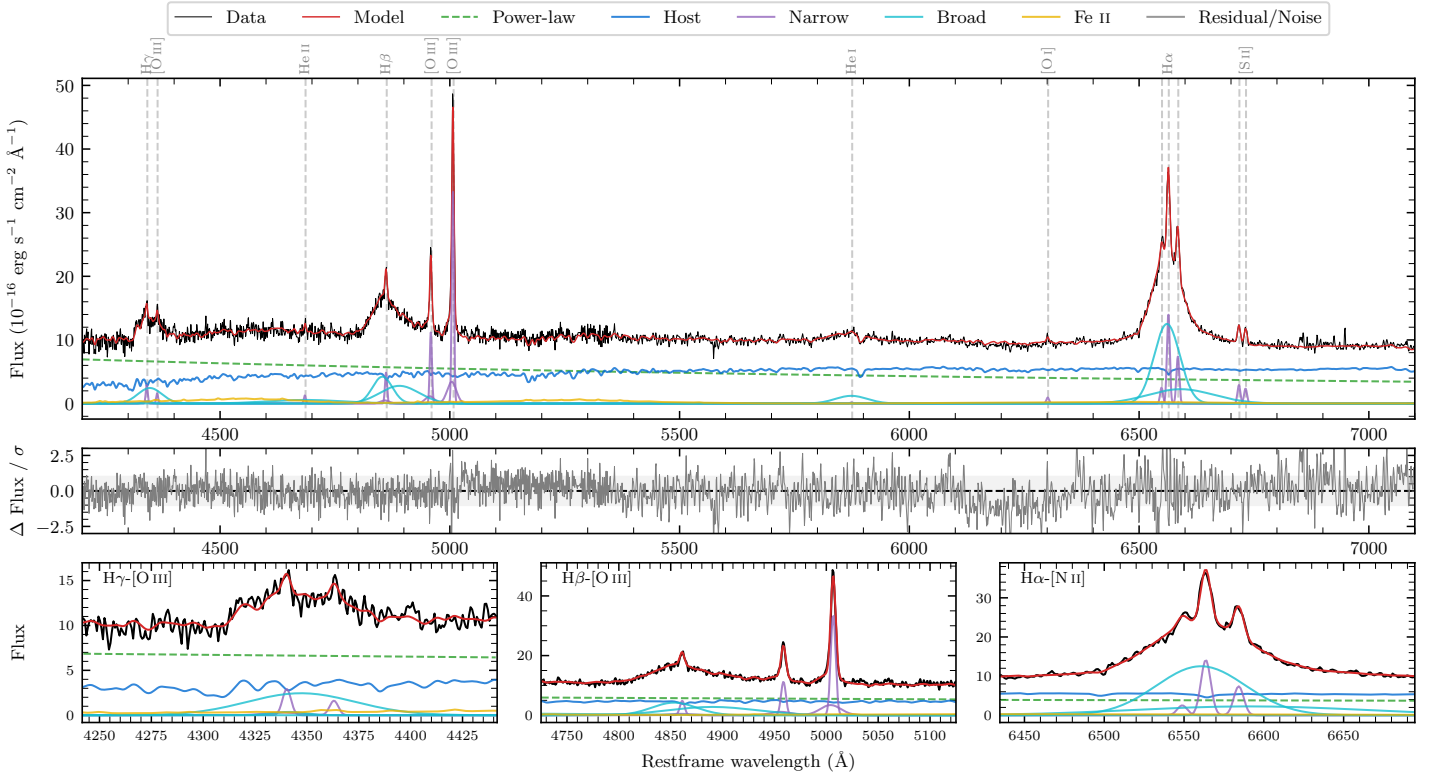
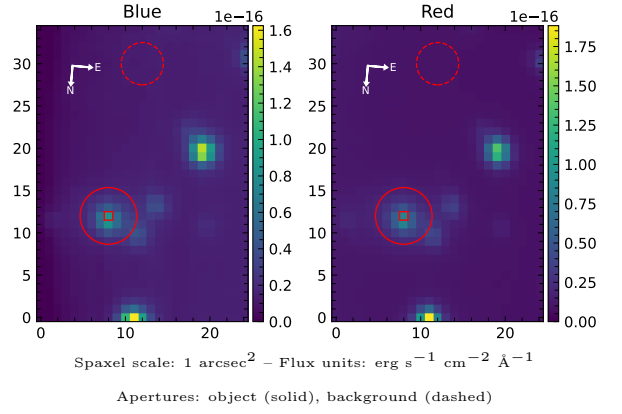


2MASS J15080462-4244448

Spectrum ID	310181797_sp3	Spectrum Type	Sy 1.5
Alt name	g1508046-424445	Quality Flag	good
z	0.0563	AGN reference	6dFGS
RA, Dec	227.0190, -42.7458	MW $E(B - V)$	0.106
MJD	59726.6	Power law α_ν	-0.66 ± 0.17
SNR/ \AA B/R	13.9/27.7	$\log L_{5100, \text{AGN}}$	43.32 ± 0.03
Obs Airmass	1.07	$\log H\beta_{\text{Br}} / [\text{O III}]$	0.27 ± 0.01
SMSS ID	310181797	$\log M_{L5100} / M_\odot$	7.91 ± 0.05
Closest SMSS	5.01", 2460485054	$\log M_{\text{H}\alpha} / M_\odot$	7.55 ± 0.02
SMSS Mean r_{psf}	15.9 ± 0.1	$\log M_{\text{H}\beta} / M_\odot$	7.96 ± 0.05
2MASS K_{ext}	12.5 ± 0.1	$\log M_{[\text{O III}]} / M_\odot$	7.99 ± 0.05



Emission Line Measurements

Line	$\log L$ (erg s $^{-1}$)	FWHM (km s $^{-1}$)	σ (km s $^{-1}$)	EW (\AA)
H γ Narrow	40.24 ± 0.11	357 ± 63	357 ± 27	3.41 ± 0.67
Hγ Broad	41.14 ± 0.04	3822 ± 385	1520 ± 59	26.74 ± 1.25
[O III] 4364	39.83 ± 0.18	334 ± 63	141 ± 25	1.33 ± 0.33
He II Narrow	39.76 ± 0.17	334 ± 63	141 ± 25	1.25 ± 0.32
He II Broad	40.99 ± 0.07	12538 ± 133	5324 ± 56	21.19 ± 1.97
H β Narrow	40.51 ± 0.05	357 ± 63	357 ± 27	7.38 ± 0.67
Hβ Broad	41.63 ± 0.01	4464 ± 230	1958 ± 40	97.46 ± 1.43
[O III] 5007	41.36 ± 0.01	357 ± 63	357 ± 27	54.70 ± 0.70
He I Narrow	38.99 ± 0.39	334 ± 63	141 ± 25	0.29 ± 0.20
He I Broad	40.93 ± 0.02	4148 ± 85	1761 ± 35	25.17 ± 0.78
[O I] 6300	39.76 ± 0.08	334 ± 63	141 ± 25	1.86 ± 0.22
H α Narrow	40.95 ± 0.01	334 ± 63	141 ± 25	30.32 ± 0.34
Hα Broad	42.02 ± 0.01	3304 ± 67	1525 ± 26	355.67 ± 1.36
[N II] 6585	40.67 ± 0.02	334 ± 63	141 ± 25	15.98 ± 0.31
[S II] 6718	40.27 ± 0.03	334 ± 63	141 ± 25	6.61 ± 0.26
[S II] 6732	40.18 ± 0.03	334 ± 63	141 ± 25	5.40 ± 0.26

Emission Summary

H α Broad SNR	19.66
H β Broad SNR	8.35
H γ Broad SNR	3.87
AGN frac	0.54
Host frac	0.46
$\log L_{5100, \text{Host}}$	43.24
Fe II/H β	0.39
Fe II/[O III]	0.71

Quality Flags

spurious_hab/hbb	0/0
15100	0
balmer	0
balmer_snr	0
hb_width	0
balmer_width	0