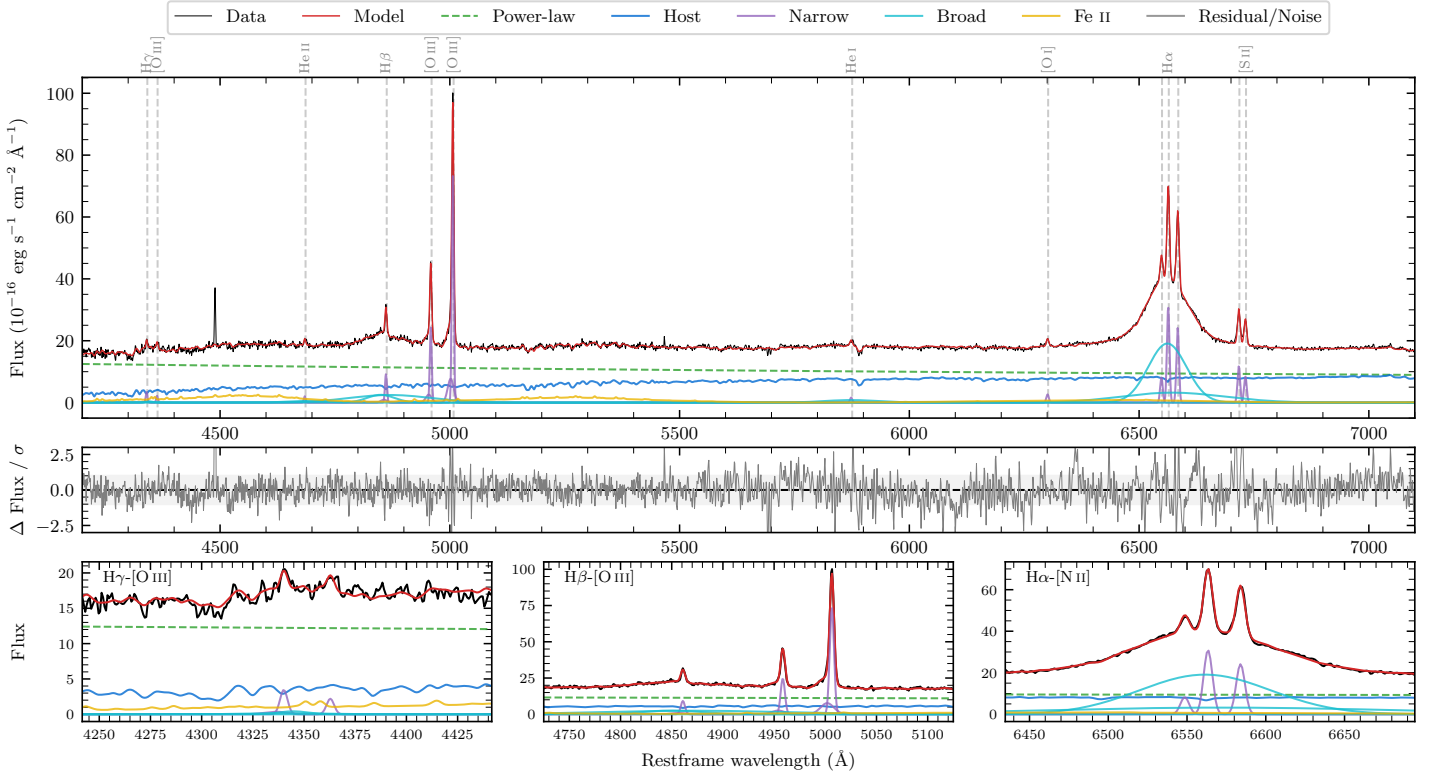
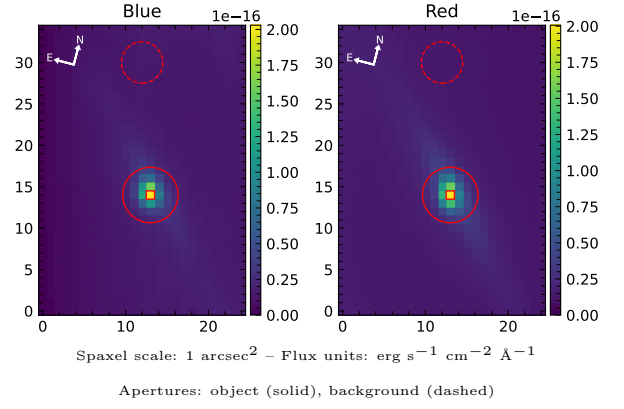


ESO 578-9

| Spectrum ID | 108255051_sp1 | Spectrum Type | Sy 1.5 |
|----------------------------|--------------------|--|------------------|
| Alt name | g1356367-193145 | Quality Flag | good |
| z | 0.0346 | AGN reference | 6dFGS |
| RA, Dec | 209.1529, -19.5291 | MW $E(B - V)$ | 0.081 |
| MJD | 59671.58 | Power law α_ν | -1.37 ± 0.09 |
| SNR/ \AA B/R | 22.1/43.1 | $\log L_{5100, \text{AGN}}$ | 43.20 ± 0.02 |
| Obs Airmass | 1.08 | $\log H\beta_{\text{Br}}/[\text{O III}]$ | -0.43 ± 0.32 |
| SMSS ID | 108255051 | $\log M_{L5100}/M_\odot$ | 7.83 ± 0.04 |
| Closest SMSS | 8.68", 2175458979 | $\log M_{H\alpha}/M_\odot$ | 7.84 ± 0.01 |
| SMSS Mean r_{psf} | 15.4 ± 0.0 | $\log M_{H\beta}/M_\odot$ | 7.53 ± 0.17 |
| 2MASS K_{ext} | 11.3 ± 0.1 | $\log M_{[\text{O III}]} / M_\odot$ | 7.87 ± 0.04 |



Emission Line Measurements

| Line | $\log L$ (erg s $^{-1}$) | FWHM (km s $^{-1}$) | σ (km s $^{-1}$) | EW (\AA) |
|-----------------------------------|------------------------------------|----------------------------------|---------------------------------|-------------------------------------|
| H γ Narrow | 39.79 ± 0.10 | 318 ± 62 | 252 ± 26 | 1.78 ± 0.31 |
| Hγ Broad | — | — | — | — |
| [O III] 4364 | 39.47 ± 0.14 | 298 ± 62 | 127 ± 25 | 0.86 ± 0.17 |
| He II Narrow | 39.47 ± 0.13 | 298 ± 62 | 127 ± 25 | 0.90 ± 0.16 |
| He II Broad | — | — | — | — |
| H β Narrow | 40.26 ± 0.03 | 318 ± 62 | 252 ± 26 | 5.69 ± 0.27 |
| Hβ Broad | $40.74^{+0.59}_{-0.05}$ | 4304 ± 174 | 1566 ± 66 | 17.01 ± 0.60 |
| [O III] 5007 | 41.18 ± 0.01 | 318 ± 62 | 252 ± 26 | 47.79 ± 0.29 |
| He I Narrow | 39.47 ± 0.07 | 298 ± 62 | 127 ± 25 | 1.04 ± 0.10 |
| He I Broad | 40.55 ± 0.04 | 7066 ± 141 | 3001 ± 59 | 12.51 ± 0.53 |
| [O I] 6300 | 39.72 ± 0.04 | 298 ± 62 | 127 ± 25 | 1.91 ± 0.11 |
| H α Narrow | 40.80 ± 0.01 | 298 ± 62 | 127 ± 25 | 23.58 ± 0.15 |
| Hα Broad | 41.93 ± 0.01 | 4900 ± 66 | 2233 ± 33 | 317.89 ± 0.81 |
| [N II] 6585 | 40.69 ± 0.01 | 298 ± 62 | 127 ± 25 | 18.52 ± 0.15 |
| [S II] 6718 | 40.39 ± 0.01 | 298 ± 62 | 127 ± 25 | 9.31 ± 0.14 |
| [S II] 6732 | 40.25 ± 0.01 | 298 ± 62 | 127 ± 25 | 6.71 ± 0.13 |

Emission Summary

| | |
|------------------------------|-------|
| H α Broad SNR | 27.10 |
| H β Broad SNR | 3.07 |
| H γ Broad SNR | 0.80 |
| AGN frac | 0.67 |
| Host frac | 0.33 |
| $\log L_{5100, \text{Host}}$ | 42.89 |
| Fe II/H β | — |
| Fe II/[O III] | — |

Quality Flags

| | |
|------------------|-----|
| spurious_hab/hbb | 0/1 |
| 15100 | 0 |
| balmer | 0 |
| balmer_snr | 2 |
| hb_width | 0 |
| balmer_width | 2 |