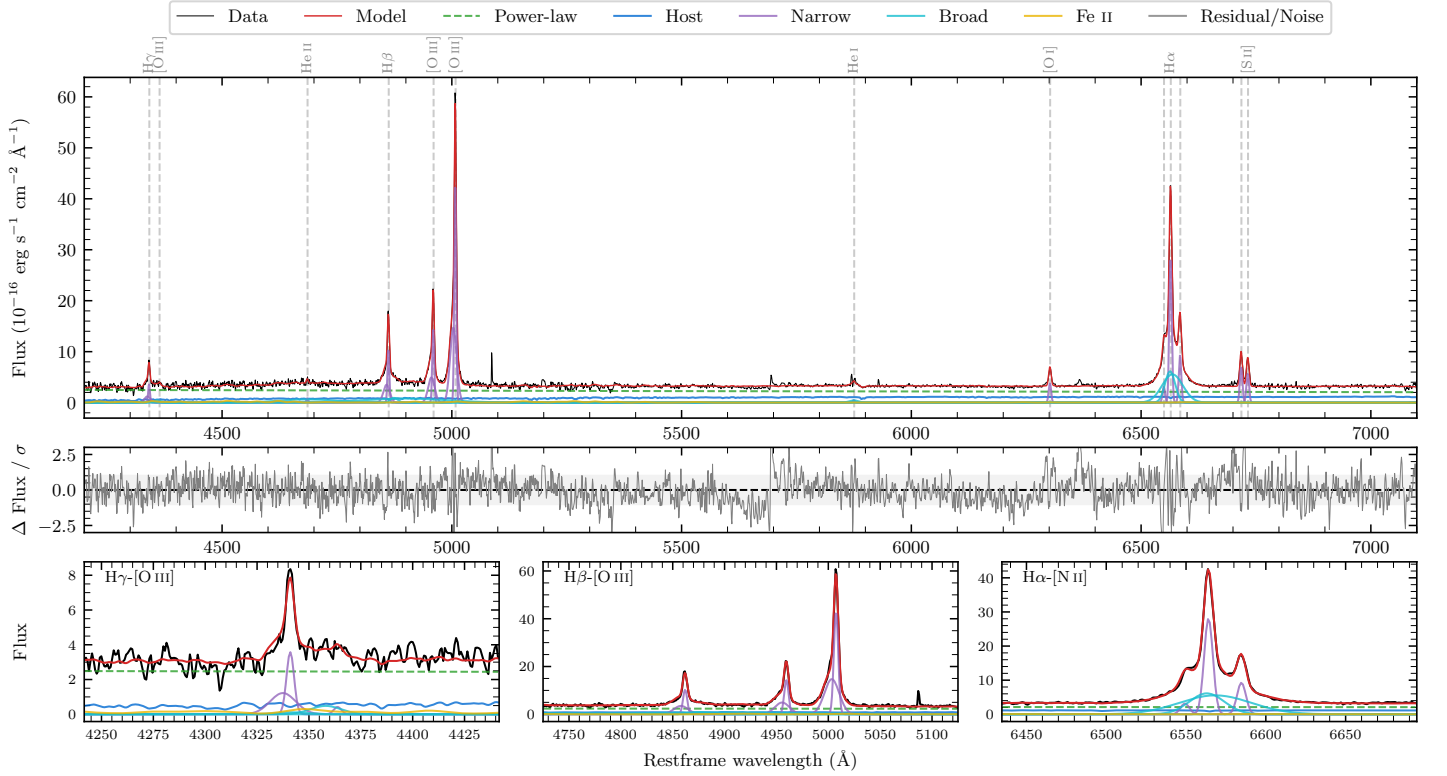
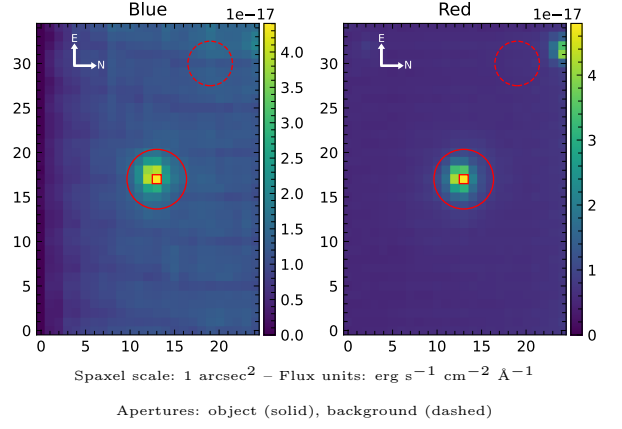


# LEDA 628465

Spectrum ID	95390047_sp1	Spectrum Type	Sy 1.8
Alt name	g1243078-370552	Quality Flag	good
$z$	0.0732	AGN reference	6dFGS
RA, Dec	190.7827, -37.0976	MW $E(B - V)$	0.060
MJD	60351.72	Power law $\alpha_\nu$	$-1.62 \pm 0.26$
SNR/Å B/R	8.1/12.9	$\log L_{5100, \text{AGN}}$	$43.19 \pm 0.02$
Obs Airmass	1.01	$\log H\beta_{\text{Br}} / [\text{O III}]$	$-1.41 \pm 0.55$
SMSS ID	95390047	$\log M_{L5100} / M_\odot$	$6.70 \pm 0.03$
Closest SMSS	None $< 15''$	$\log M_{\text{H}\alpha} / M_\odot$	$6.82 \pm 0.04$
SMSS Mean $r_{\text{psf}}$	$17.2 \pm 0.1$	$\log M_{\text{H}\beta} / M_\odot$	$6.27 \pm 0.27$
2MASS $K_{\text{ext}}$	nan $\pm$ nan	$\log M_{[\text{O III}]} / M_\odot$	$7.07 \pm 0.02$



## Emission Line Measurements

Line	$\log L$ (erg s $^{-1}$ )	FWHM (km s $^{-1}$ )	$\sigma$ (km s $^{-1}$ )	EW (Å)
H $\gamma$ Narrow	$40.70 \pm 0.04$	$363 \pm 63$	$347 \pm 25$	$15.36 \pm 0.86$
<b>H<math>\gamma</math> Broad</b>	<b><math>40.23 \pm 0.17</math></b>	<b><math>1325 \pm 214</math></b>	<b><math>564 \pm 68</math></b>	<b><math>4.79 \pm 1.00</math></b>
[O III] 4364	$39.44 \pm 0.36$	$298 \pm 62$	$126 \pm 25$	$0.85 \pm 0.44$
He II Narrow	$39.76 \pm 0.16$	$298 \pm 62$	$126 \pm 25$	$1.83 \pm 0.41$
He II Broad	—	—	—	—
H $\beta$ Narrow	$41.21 \pm 0.01$	$363 \pm 63$	$347 \pm 25$	$51.63 \pm 0.85$
<b>H<math>\beta</math> Broad</b>	<b><math>40.43^{+1.02}_{-0.07}</math></b>	<b><math>1180 \pm 25</math></b>	<b><math>332 \pm 25</math></b>	<b><math>8.64 \pm 0.89</math></b>
[O III] 5007	$41.84 \pm 0.01$	$363 \pm 63$	$347 \pm 25$	$225.06 \pm 0.99$
He I Narrow	$39.64 \pm 0.19$	$298 \pm 62$	$126 \pm 25$	$1.52 \pm 0.47$
He I Broad	$40.20 \pm 0.11$	$1181 \pm 63$	$501 \pm 25$	$5.46 \pm 0.69$
[O I] 6300	$40.55 \pm 0.02$	$298 \pm 62$	$126 \pm 25$	$12.66 \pm 0.29$
H $\alpha$ Narrow	$41.44 \pm 0.01$	$298 \pm 62$	$126 \pm 25$	$98.79 \pm 0.46$
<b>H<math>\alpha</math> Broad</b>	<b><math>41.83 \pm 0.01</math></b>	<b><math>1618 \pm 66</math></b>	<b><math>700 \pm 25</math></b>	<b><math>245.63 \pm 1.01</math></b>
[N II] 6585	$40.96 \pm 0.01$	$298 \pm 62$	$126 \pm 25$	$32.69 \pm 0.38$
[S II] 6718	$40.84 \pm 0.01$	$298 \pm 62$	$126 \pm 25$	$25.13 \pm 0.44$
[S II] 6732	$40.76 \pm 0.01$	$298 \pm 62$	$126 \pm 25$	$20.79 \pm 0.38$

## Emission Summary

H $\alpha$ Broad SNR	26.56
H $\beta$ Broad SNR	2.14
H $\gamma$ Broad SNR	1.21
AGN frac	0.75
Host frac	0.25
$\log L_{5100, \text{Host}}$	42.71
Fe II/H $\beta$	—
Fe II/[O III]	—

## Quality Flags

spurious_hab/hbb	0/2
15100	0
balmer	1
balmer_snr	1
hb_width	1
balmer_width	2