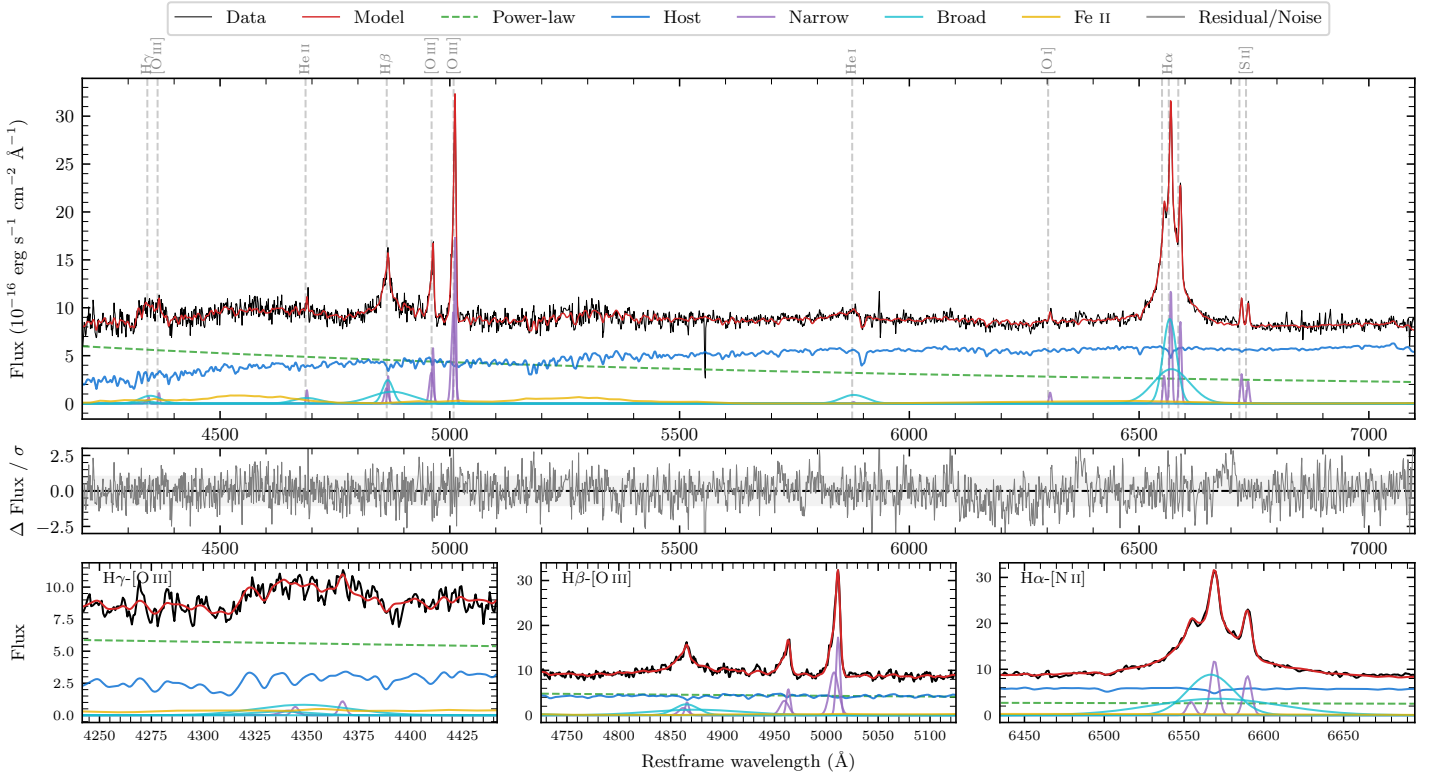
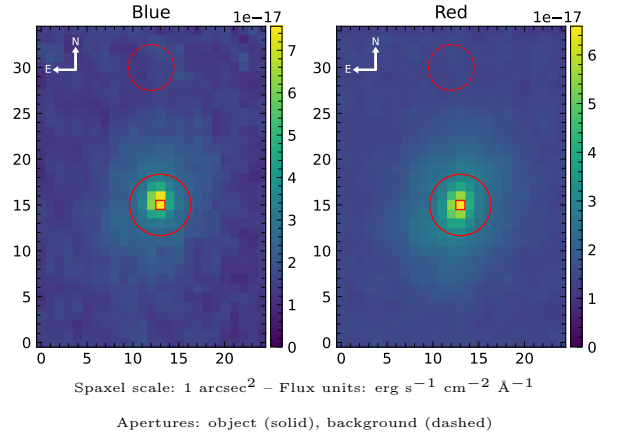


LEDA 3082029

Spectrum ID	104137171_sp1	Spectrum Type	Sy 1.5
Alt name	g1235403-210248	Quality Flag	good
z	0.0617	AGN reference	6dFGS
RA, Dec	188.9182, -21.0467	MW $E(B - V)$	0.056
MJD	60081.5	Power law α_ν	-0.14 ± 0.15
SNR/Å B/R	15.9/24.7	$\log L_{5100, \text{AGN}}$	43.29 ± 0.02
Obs Airmass	1.04	$\log H\beta_{\text{Br}}/[\text{O III}]$	0.06 ± 0.02
SMSS ID	104137171	$\log M_{L5100}/M_\odot$	7.32 ± 0.08
Closest SMSS	None $< 15''$	$\log M_{\text{H}\alpha}/M_\odot$	6.97 ± 0.03
SMSS Mean r_{psf}	16.1 ± 0.2	$\log M_{\text{H}\beta}/M_\odot$	7.25 ± 0.09
2MASS K_{ext}	12.2 ± 0.1	$\log M_{[\text{O III}]} / M_\odot$	7.36 ± 0.08



Emission Line Measurements

Line	$\log L$ (erg s $^{-1}$)	FWHM (km s $^{-1}$)	σ (km s $^{-1}$)	EW (Å)
H γ Narrow	39.78 ± 0.22	369 ± 63	237 ± 26	1.17 ± 0.35
Hγ Broad	40.76 ± 0.07	3502 ± 327	1311 ± 91	10.88 ± 0.92
[O III] 4364	39.65 ± 0.18	271 ± 63	114 ± 25	0.88 ± 0.23
He II Narrow	39.79 ± 0.12	271 ± 63	114 ± 25	1.37 ± 0.25
He II Broad	40.62 ± 0.08	4354 ± 371	1849 ± 157	9.27 ± 0.99
H β Narrow	40.47 ± 0.06	369 ± 63	237 ± 26	7.13 ± 0.40
Hβ Broad	41.32 ± 0.02	2301 ± 212	1704 ± 88	49.77 ± 1.34
[O III] 5007	41.26 ± 0.01	369 ± 63	237 ± 26	46.00 ± 0.45
He I Narrow	38.95 ± 0.40	271 ± 63	114 ± 25	0.31 ± 0.28
He I Broad	40.79 ± 0.04	3317 ± 164	1409 ± 69	20.79 ± 1.04
[O I] 6300	39.83 ± 0.07	271 ± 63	114 ± 25	2.64 ± 0.29
H α Narrow	40.86 ± 0.01	271 ± 63	114 ± 25	30.44 ± 0.43
Hα Broad	41.82 ± 0.01	1933 ± 71	995 ± 26	278.00 ± 1.48
[N II] 6585	40.72 ± 0.01	271 ± 63	114 ± 25	22.08 ± 0.37
[S II] 6718	40.29 ± 0.03	271 ± 63	114 ± 25	8.43 ± 0.35
[S II] 6732	40.16 ± 0.03	271 ± 63	114 ± 25	6.38 ± 0.34

Emission Summary

H α Broad SNR	21.57
H β Broad SNR	6.34
H γ Broad SNR	1.89
AGN frac	0.49
Host frac	0.51
$\log L_{5100, \text{Host}}$	43.31
Fe II/H β	0.93
Fe II/[O III]	1.06

Quality Flags

spurious_hab/hbb	0/0
15100	1
balmer	0
balmer_snr	1
hb_width	2
balmer_width	0