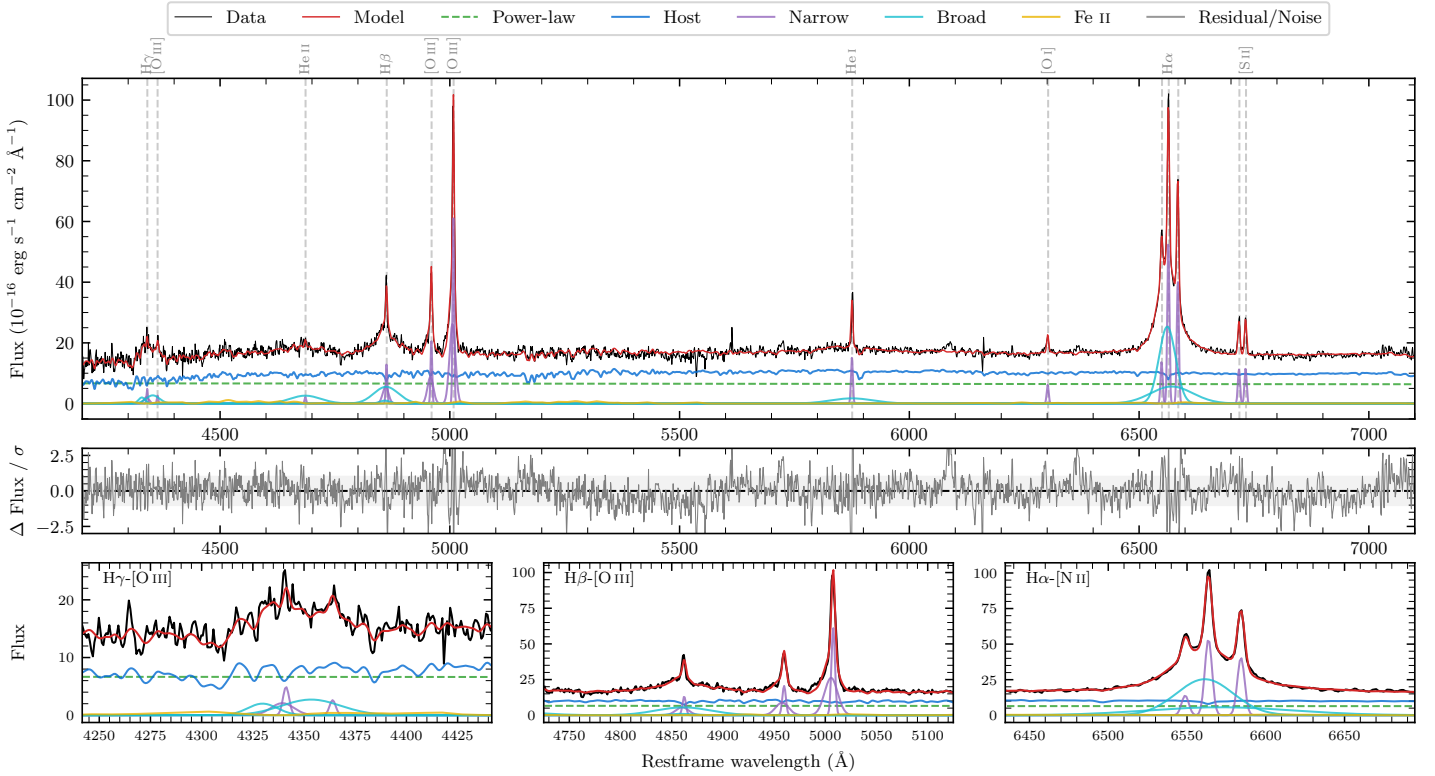
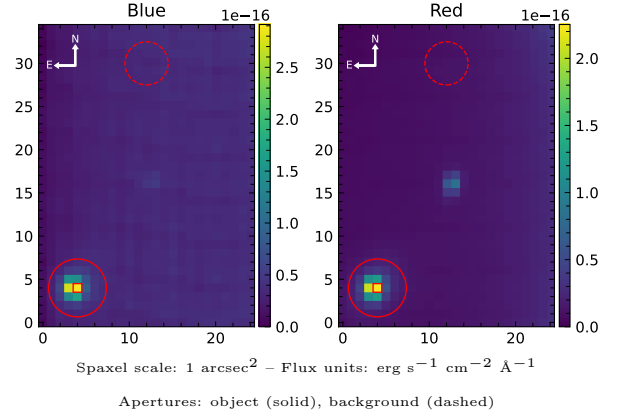


# LEDA 3096158

Spectrum ID	104125016_sp1	Spectrum Type	Sy 1.5
Alt name	g1233514-210345	Quality Flag	good
$z$	0.0224	AGN reference	6dFGS
RA, Dec	188.4643, -21.0625	MW $E(B - V)$	0.052
MJD	60018.63	Power law $\alpha_\nu$	$-1.92 \pm 0.07$
SNR/Å B/R	12.4/19.6	$\log L_{5100, \text{AGN}}$	$42.59 \pm 0.02$
Obs Airmass	1.02	$\log H\beta_{\text{Br}}/[\text{O III}]$	$-0.23 \pm 0.02$
SMSS ID	<a href="#">104125016</a>	$\log M_{L5100}/M_\odot$	$7.41 \pm 0.06$
Closest SMSS	12.28", <a href="#">104125012</a>	$\log M_{\text{H}\alpha}/M_\odot$	$6.77 \pm 0.04$
SMSS Mean $r_{\text{psf}}$	$15.7 \pm 0.1$	$\log M_{\text{H}\beta}/M_\odot$	$7.35 \pm 0.08$
2MASS $K_{\text{ext}}$	$12.4 \pm 0.1$	$\log M_{[\text{O III}]} / M_\odot$	$7.58 \pm 0.06$



## Emission Line Measurements

Line	$\log L$ (erg s <sup>-1</sup> )	FWHM (km s <sup>-1</sup> )	$\sigma$ (km s <sup>-1</sup> )	EW (Å)
H $\gamma$ Narrow	$39.75 \pm 0.09$	$320 \pm 63$	$313 \pm 27$	$7.39 \pm 0.98$
<b>H<math>\gamma</math> Broad</b>	<b><math>40.23 \pm 0.07</math></b>	<b><math>3175 \pm 283</math></b>	<b><math>1051 \pm 81</math></b>	<b><math>20.76 \pm 1.58</math></b>
[O III] 4364	$39.07 \pm 0.21$	$249 \pm 63$	$104 \pm 25$	$1.54 \pm 0.49$
He II Narrow	$39.02 \pm 0.20$	$249 \pm 63$	$104 \pm 25$	$1.36 \pm 0.40$
He II Broad	$40.41 \pm 0.04$	$4987 \pm 160$	$2118 \pm 67$	$33.58 \pm 1.85$
H $\beta$ Narrow	$40.23 \pm 0.03$	$320 \pm 63$	$313 \pm 27$	$22.29 \pm 0.79$
<b>H<math>\beta</math> Broad</b>	<b><math>40.68 \pm 0.02</math></b>	<b><math>3613 \pm 234</math></b>	<b><math>1365 \pm 62</math></b>	<b><math>61.66 \pm 1.62</math></b>
[O III] 5007	$40.91 \pm 0.01$	$320 \pm 63$	$313 \pm 27$	$107.56 \pm 0.79$
He I Narrow	$39.96 \pm 0.02$	$249 \pm 63$	$104 \pm 25$	$12.27 \pm 0.33$
He I Broad	$40.38 \pm 0.04$	$5557 \pm 252$	$2360 \pm 107$	$31.54 \pm 1.64$
[O I] 6300	$39.60 \pm 0.04$	$249 \pm 63$	$104 \pm 25$	$5.40 \pm 0.32$
H $\alpha$ Narrow	$40.56 \pm 0.01$	$249 \pm 63$	$104 \pm 25$	$48.90 \pm 0.39$
<b>H<math>\alpha</math> Broad</b>	<b><math>41.33 \pm 0.01</math></b>	<b><math>2183 \pm 68</math></b>	<b><math>1005 \pm 32</math></b>	<b><math>285.29 \pm 1.48</math></b>
[N II] 6585	$40.44 \pm 0.01$	$249 \pm 63$	$104 \pm 25$	$37.11 \pm 0.37$
[S II] 6718	$39.89 \pm 0.03$	$249 \pm 63$	$104 \pm 25$	$10.48 \pm 0.37$
[S II] 6732	$39.91 \pm 0.02$	$249 \pm 63$	$104 \pm 25$	$10.89 \pm 0.37$

## Emission Summary

H $\alpha$ Broad SNR	21.69
H $\beta$ Broad SNR	4.52
H $\gamma$ Broad SNR	2.26
AGN frac	0.42
Host frac	0.58
$\log L_{5100, \text{Host}}$	42.73
Fe II/H $\beta$	0.41
Fe II/[O III]	0.24

## Quality Flags

spurious_hab/hbb	0/0
15100	1
balmer	0
balmer_snr	1
hb_width	0
balmer_width	0