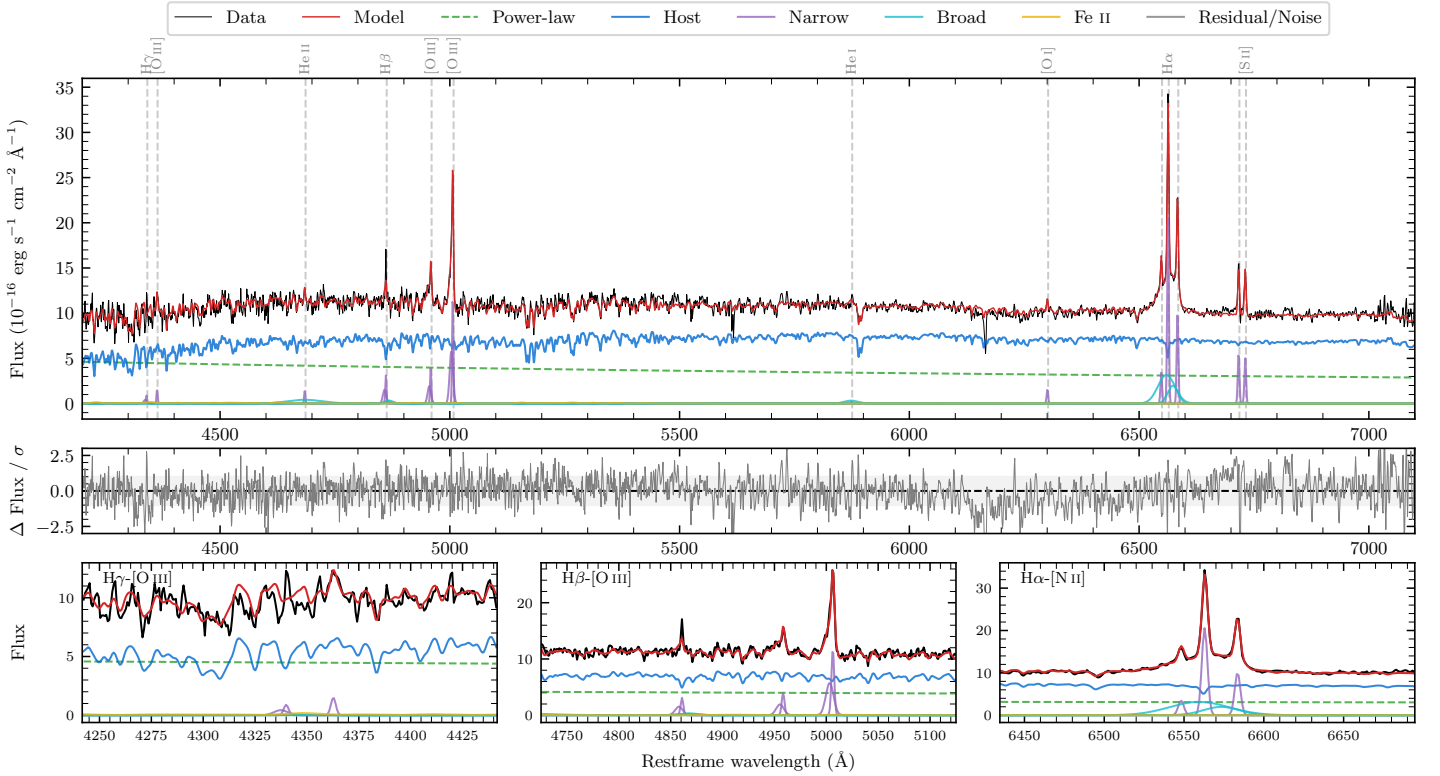
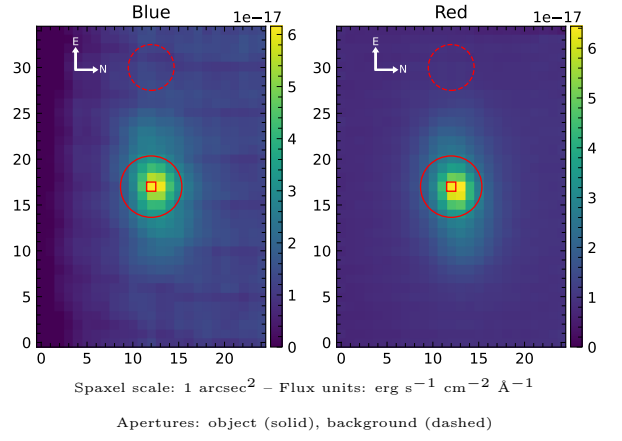


LEDA 156907

Spectrum ID	91968305_sp1	Spectrum Type	Sy 1.8
Alt name	g1140422-174010	Quality Flag	good
z	0.0215	AGN reference	6dFGS
RA, Dec	175.1759, -17.6694	MW $E(B - V)$	0.036
MJD	60350.68	Power law α_ν	-1.10 ± 0.09
SNR/ \AA B/R	18.7/28.2	$\log L_{5100, \text{AGN}}$	42.33 ± 0.02
Obs Airmass	1.03	$\log H\beta_{\text{Br}}/[\text{O III}]$	-0.82 ± 0.14
SMSS ID	91968305	$\log M_{L5100}/M_\odot$	6.36 ± 0.04
Closest SMSS	None $< 15''$	$\log M_{\text{H}\alpha}/M_\odot$	6.05 ± 0.07
SMSS Mean r_{psf}	15.2 ± 0.2	$\log M_{\text{H}\beta}/M_\odot$	5.74 ± 0.12
2MASS K_{ext}	11.9 ± 0.1	$\log M_{[\text{O III}]} / M_\odot$	6.20 ± 0.07



Emission Line Measurements

Line	$\log L$ (erg s $^{-1}$)	FWHM (km s $^{-1}$)	σ (km s $^{-1}$)	EW (Angstroms)
H γ Narrow	38.84 ± 0.20	259 ± 63	199 ± 25	1.40 ± 0.44
Hγ Broad	—	—	—	—
[O III] 4364	38.69 ± 0.19	199 ± 62	81 ± 25	1.02 ± 0.40
He II Narrow	38.70 ± 0.15	199 ± 62	81 ± 25	1.10 ± 0.22
He II Broad	39.65 ± 0.10	5739 ± 63	2437 ± 25	9.86 ± 1.34
H β Narrow	39.43 ± 0.06	259 ± 63	199 ± 25	6.09 ± 0.43
Hβ Broad	39.19 ± 0.14	1214 ± 31	426 ± 25	3.11 ± 0.61
[O III] 5007	40.02 ± 0.01	259 ± 63	199 ± 25	24.27 ± 0.43
He I Narrow	38.02 ± 0.41	199 ± 62	81 ± 25	0.28 ± 0.19
He I Broad	39.15 ± 0.13	1854 ± 63	787 ± 25	3.77 ± 0.65
[O I] 6300	38.86 ± 0.08	199 ± 62	81 ± 25	2.09 ± 0.23
H α Narrow	40.01 ± 0.01	199 ± 62	81 ± 25	30.38 ± 0.27
Hα Broad	40.35 ± 0.01	1883 ± 72	706 ± 25	66.80 ± 0.77
[N II] 6585	39.70 ± 0.01	199 ± 62	81 ± 25	14.94 ± 0.25
[S II] 6718	39.44 ± 0.03	199 ± 62	81 ± 25	8.44 ± 0.30
[S II] 6732	39.41 ± 0.02	199 ± 62	81 ± 25	7.78 ± 0.28

Emission Summary

H α Broad SNR	7.70
H β Broad SNR	1.12
H γ Broad SNR	0.00
AGN frac	0.37
Host frac	0.63
$\log L_{5100, \text{Host}}$	42.56
Fe II/H β	1.79
Fe II/[O III]	0.24

Quality Flags

spurious_hab/hbb	0/0
15100	1
balmer	1
balmer_snr	2
hb_width	0
balmer_width	2