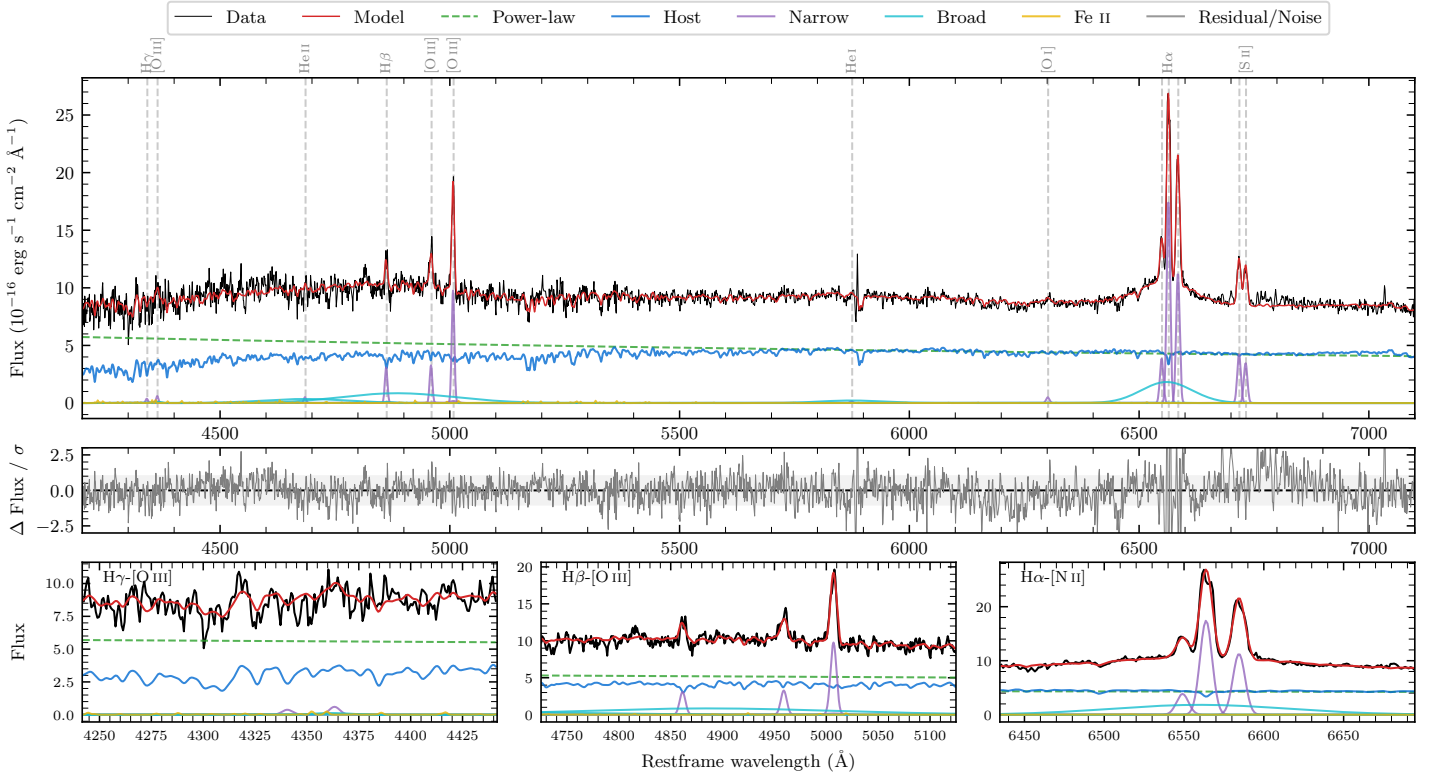
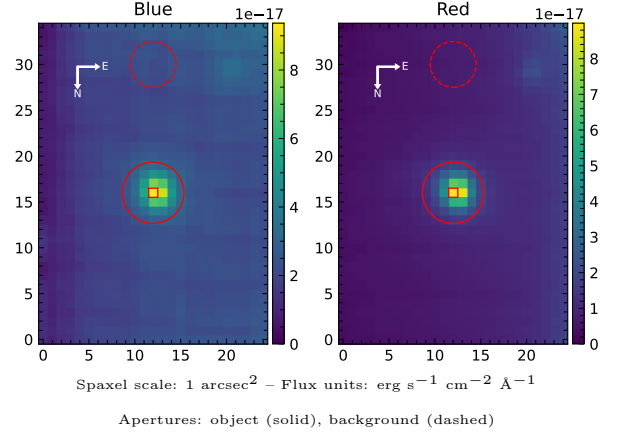


# 6dFGS gJ110726.4-302906

Spectrum ID	87034752_sp1	Spectrum Type	Sy 1.5+
Alt name	g1107264-302906	Quality Flag	good
$z$	0.0706	AGN reference	6dFGS
RA, Dec	166.8598, -30.4849	MW $E(B - V)$	0.060
MJD	60020.51	Power law $\alpha_\nu$	$-1.35 \pm 0.15$
SNR/ $\text{\AA}$ B/R	11.8/28.0	$\log L_{5100, \text{AGN}}$	$43.50 \pm 0.02$
Obs Airmass	1.04	$\log H\beta_{\text{Br}}/[\text{O III}]$	$< -0.14$
SMSS ID	87034752	$\log M_{L5100}/M_\odot$	—
Closest SMSS	None $< 15''$	$\log M_{\text{H}\alpha}/M_\odot$	$7.75 \pm 0.03$
SMSS Mean $r_{\text{psf}}$	$16.2 \pm 0.1$	$\log M_{\text{H}\beta}/M_\odot$	—
2MASS $K_{\text{ext}}$	$12.5 \pm 0.1$	$\log M_{[\text{O III}]} / M_\odot$	—



## Emission Line Measurements

Line	$\log L$ (erg s <sup>-1</sup> )	FWHM (km s <sup>-1</sup> )	$\sigma$ (km s <sup>-1</sup> )	EW (Å)
H $\gamma$ Narrow	—	—	—	—
<b>H<math>\gamma</math> Broad</b>	—	—	—	—
[O III] 4364	$39.69 \pm 0.39$	$411 \pm 62$	$173 \pm 25$	$0.73 \pm 0.45$
He II Narrow	$39.65 \pm 0.36$	$411 \pm 62$	$173 \pm 25$	$0.69 \pm 0.41$
He II Broad	—	—	—	—
H $\beta$ Narrow	$40.48 \pm 0.08$	$412 \pm 63$	$216 \pm 41$	$4.71 \pm 0.70$
<b>H<math>\beta</math> Broad</b>	$< 40.82$	—	—	—
[O III] 5007	$40.99 \pm 0.03$	$412 \pm 63$	$216 \pm 41$	$15.67 \pm 0.74$
He I Narrow	$39.21 \pm 0.41$	$411 \pm 62$	$173 \pm 25$	$0.29 \pm 0.26$
He I Broad	$40.69 \pm 0.10$	$8150 \pm 63$	$3461 \pm 25$	$8.74 \pm 0.93$
[O I] 6300	$39.77 \pm 0.14$	$411 \pm 62$	$173 \pm 25$	$1.10 \pm 0.21$
H $\alpha$ Narrow	$41.33 \pm 0.01$	$411 \pm 62$	$173 \pm 25$	$41.32 \pm 0.26$
<b>H<math>\alpha</math> Broad</b>	<b><math>41.52 \pm 0.01</math></b>	<b><math>5862 \pm 97</math></b>	<b><math>2200 \pm 25</math></b>	<b><math>63.55 \pm 0.95</math></b>
[N II] 6585	$41.15 \pm 0.01$	$411 \pm 62$	$173 \pm 25$	$26.90 \pm 0.25$
[S II] 6718	$40.73 \pm 0.02$	$411 \pm 62$	$173 \pm 25$	$10.45 \pm 0.28$
[S II] 6732	$40.64 \pm 0.02$	$411 \pm 62$	$173 \pm 25$	$8.58 \pm 0.27$

## Emission Summary

H $\alpha$ Broad SNR	2.59
H $\beta$ Broad SNR	0.00
H $\gamma$ Broad SNR	0.00
AGN frac	0.57
Host frac	0.43
$\log L_{5100, \text{Host}}$	43.37
Fe II/H $\beta$	—
Fe II/[O III]	—

## Quality Flags

spurious_hab/hbb	0/2
15100	0
balmer	2
balmer_snr	2
hb_width	2
balmer_width	2