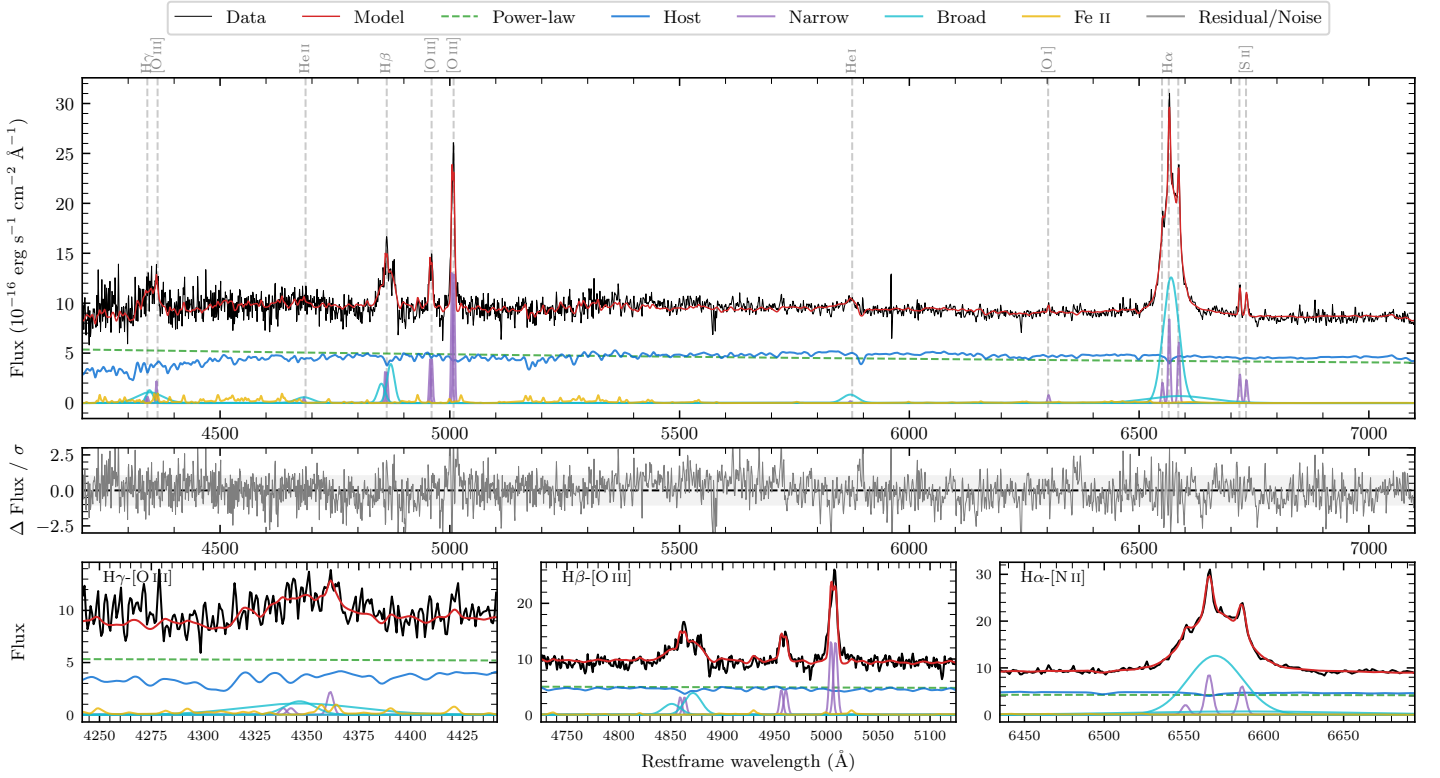
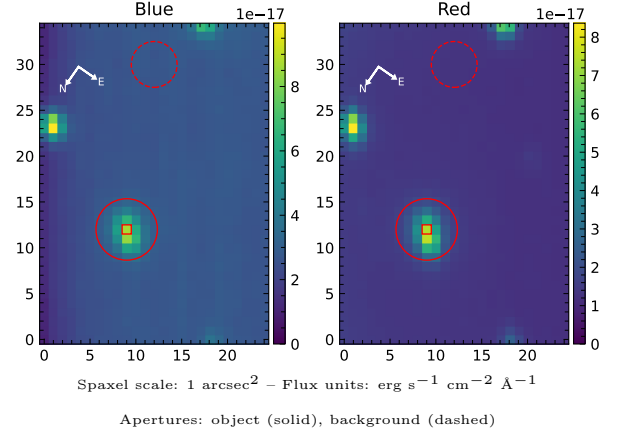


6dFGS gJ101134.8-452830

Spectrum ID	413499695_sp1	Spectrum Type	Sy 1.5
Alt name	g1011348-452830	Quality Flag	good
z	0.0575	AGN reference	6dFGS
RA, Dec	152.8950, -45.4749	MW $E(B - V)$	0.153
MJD	59352.39	Power law α_ν	-1.46 ± 0.04
SNR/ \AA B/R	11.5/22.5	$\log L_{5100, \text{AGN}}$	43.29 ± 0.02
Obs Airmass	1.05	$\log H\beta_{\text{Br}}/[\text{O III}]$	-0.01 ± 0.03
SMSS ID	413499695	$\log M_{L5100}/M_\odot$	7.17 ± 0.12
Closest SMSS	13.90", 413499694	$\log M_{H\alpha}/M_\odot$	6.90 ± 0.03
SMSS Mean r_{psf}	16.7 ± 0.0	$\log M_{H\beta}/M_\odot$	6.95 ± 0.12
2MASS K_{ext}	nan \pm nan	$\log M_{[\text{O III}]} / M_\odot$	7.09 ± 0.12



Emission Line Measurements

Line	$\log L$ (erg s ⁻¹)	FWHM (km s ⁻¹)	σ (km s ⁻¹)	EW (Å)
H γ Narrow	39.63 ± 0.34	501 ± 63	171 ± 25	1.02 ± 0.44
Hγ Broad	40.92 ± 0.07	1884 ± 452	1330 ± 106	19.93 ± 1.69
[O III] 4364	39.84 ± 0.16	248 ± 63	104 ± 25	1.69 ± 0.38
He II Narrow	39.30 ± 0.38	248 ± 63	104 ± 25	0.50 ± 0.33
He II Broad	40.35 ± 0.15	2748 ± 87	1167 ± 36	5.53 ± 1.15
H β Narrow	40.37 ± 0.06	501 ± 63	171 ± 25	6.04 ± 0.39
Hβ Broad	41.00 ± 0.03	1932 ± 262	737 ± 31	25.47 ± 0.85
[O III] 5007	41.01 ± 0.01	501 ± 63	171 ± 25	26.46 ± 0.40
He I Narrow	38.92 ± 0.41	248 ± 63	104 ± 25	0.23 ± 0.20
He I Broad	40.47 ± 0.05	1981 ± 95	841 ± 39	8.25 ± 0.61
[O I] 6300	39.57 ± 0.12	248 ± 63	104 ± 25	1.08 ± 0.20
H α Narrow	40.61 ± 0.02	248 ± 63	104 ± 25	12.36 ± 0.28
Hα Broad	41.74 ± 0.01	1902 ± 65	850 ± 37	165.32 ± 1.29
[N II] 6585	40.46 ± 0.02	248 ± 63	104 ± 25	8.80 ± 0.25
[S II] 6718	40.15 ± 0.04	248 ± 63	104 ± 25	4.30 ± 0.22
[S II] 6732	40.05 ± 0.04	248 ± 63	104 ± 25	3.41 ± 0.23

Emission Summary

H α Broad SNR	16.85
H β Broad SNR	5.09
H γ Broad SNR	3.01
AGN frac	0.52
Host frac	0.48
$\log L_{5100, \text{Host}}$	43.25
Fe II/H β	0.77
Fe II/[O III]	0.75

Quality Flags

spurious_hab/hbb	0/0
15100	0
balmer	0
balmer_snr	0
hb_width	0
balmer_width	0