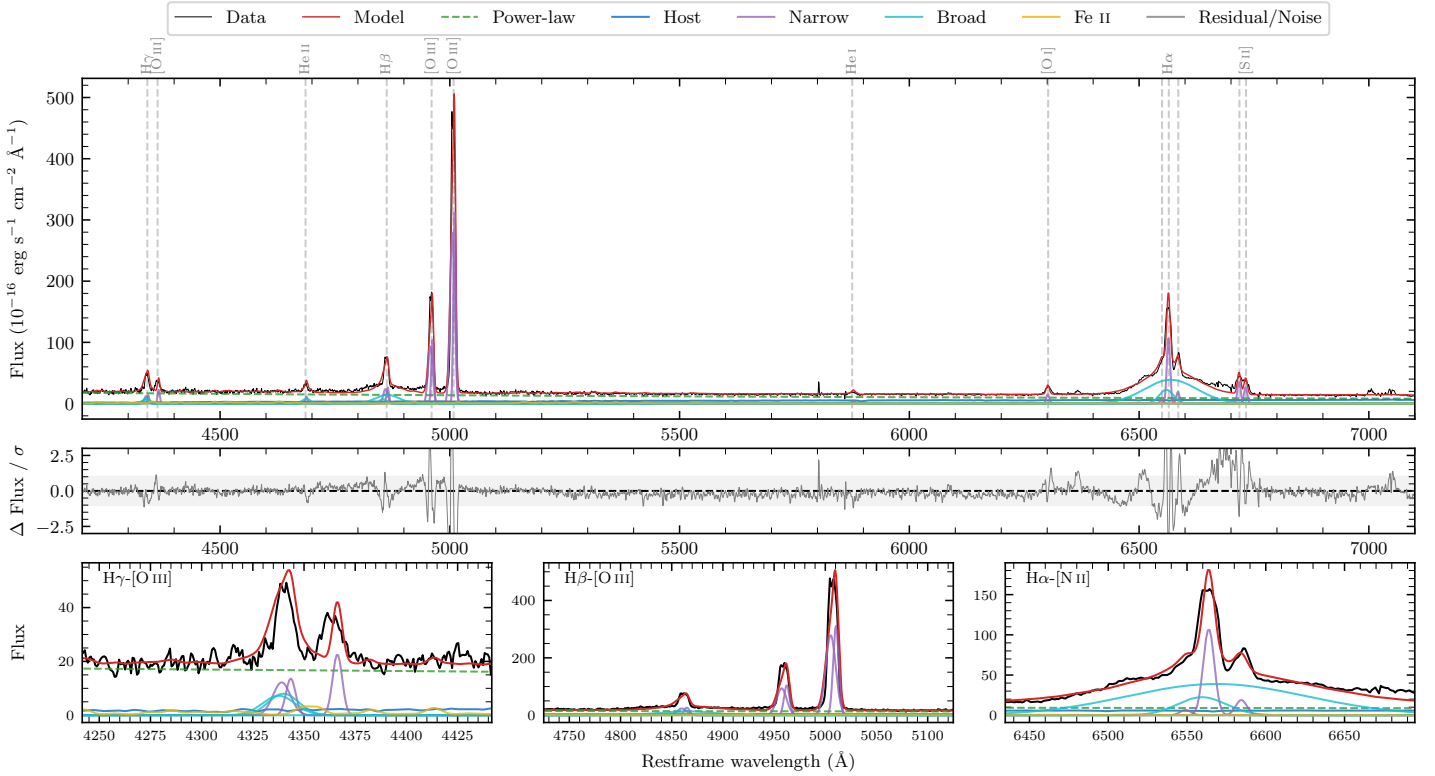
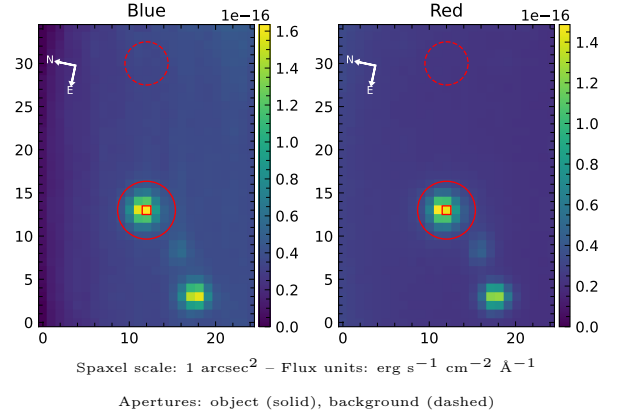


2MASS J09172721-6456270

Spectrum ID	457468024_sp1	Spectrum Type	Sy 1.8
Alt name	g0917272-645628	Quality Flag	good
z	0.0864	AGN reference	6dFGS
RA, Dec	139.3634, -64.9408	MW $E(B - V)$	0.180
MJD	58111.61	Power law α_ν	-0.50 ± 0.65
SNR/Å B/R	2.3/4.1	$\log L_{5100, \text{AGN}}$	44.09 ± 0.08
Obs Airmass	1.32	$\log H\beta_{\text{Br}} / [\text{O III}]$	-0.66 ± 0.07
SMSS ID	457468024	$\log M_{L5100} / M_\odot$	7.84 ± 0.22
Closest SMSS	6.17", 457468026	$\log M_{\text{H}\alpha} / M_\odot$	8.37 ± 0.20
SMSS Mean r_{psf}	16.8 ± 0.0	$\log M_{\text{H}\beta} / M_\odot$	7.89 ± 0.22
2MASS K_{ext}	13.4 ± 0.2	$\log M_{[\text{O III}]} / M_\odot$	8.40 ± 0.22



Emission Line Measurements

Line	$\log L$ (erg s $^{-1}$)	FWHM (km s $^{-1}$)	σ (km s $^{-1}$)	EW (Å)
H γ Narrow	41.58 ± 0.24	649 ± 94	272 ± 35	13.61 ± 2.26
Hγ Broad	41.85 ± 0.19	1254 ± 114	455 ± 46	18.94 ± 3.10
[O III] 4364	41.46 ± 0.21	380 ± 113	160 ± 47	8.67 ± 1.67
He II Narrow	41.21 ± 0.31	380 ± 113	160 ± 47	5.27 ± 1.62
He II Broad	41.55 ± 0.23	1282 ± 93	544 ± 38	12.57 ± 2.98
H β Narrow	41.92 ± 0.08	649 ± 94	272 ± 35	35.16 ± 2.33
Hβ Broad	42.35 ± 0.06	2819 ± 721	1266 ± 85	81.88 ± 5.48
[O III] 5007	43.02 ± 0.01	649 ± 94	272 ± 35	444.11 ± 3.08
He I Narrow	40.87 ± 0.33	380 ± 113	160 ± 47	3.48 ± 1.06
He I Broad	41.04 ± 0.37	1194 ± 71	507 ± 29	5.49 ± 1.97
[O I] 6300	41.45 ± 0.09	380 ± 113	160 ± 47	14.50 ± 1.31
H α Narrow	42.28 ± 0.12	380 ± 113	160 ± 47	113.77 ± 1.77
Hα Broad	43.11 ± 0.03	3906 ± 963	2026 ± 59	777.91 ± 6.46
[N II] 6585	41.55 ± 0.15	380 ± 113	160 ± 47	20.33 ± 1.64
[S II] 6718	41.84 ± 0.06	380 ± 113	160 ± 47	39.61 ± 1.86
[S II] 6732	41.72 ± 0.07	380 ± 113	160 ± 47	30.31 ± 1.82

Emission Summary

H α Broad SNR	7.29
H β Broad SNR	2.53
H γ Broad SNR	2.06
AGN frac	0.79
Host frac	0.20
$\log L_{5100, \text{Host}}$	43.49
Fe II/H β	0.46
Fe II/[O III]	0.09

Quality Flags

spurious_hab/hbb	0/0
15100	0
balmer	1
balmer_snr	1
hb_width	0
balmer_width	2