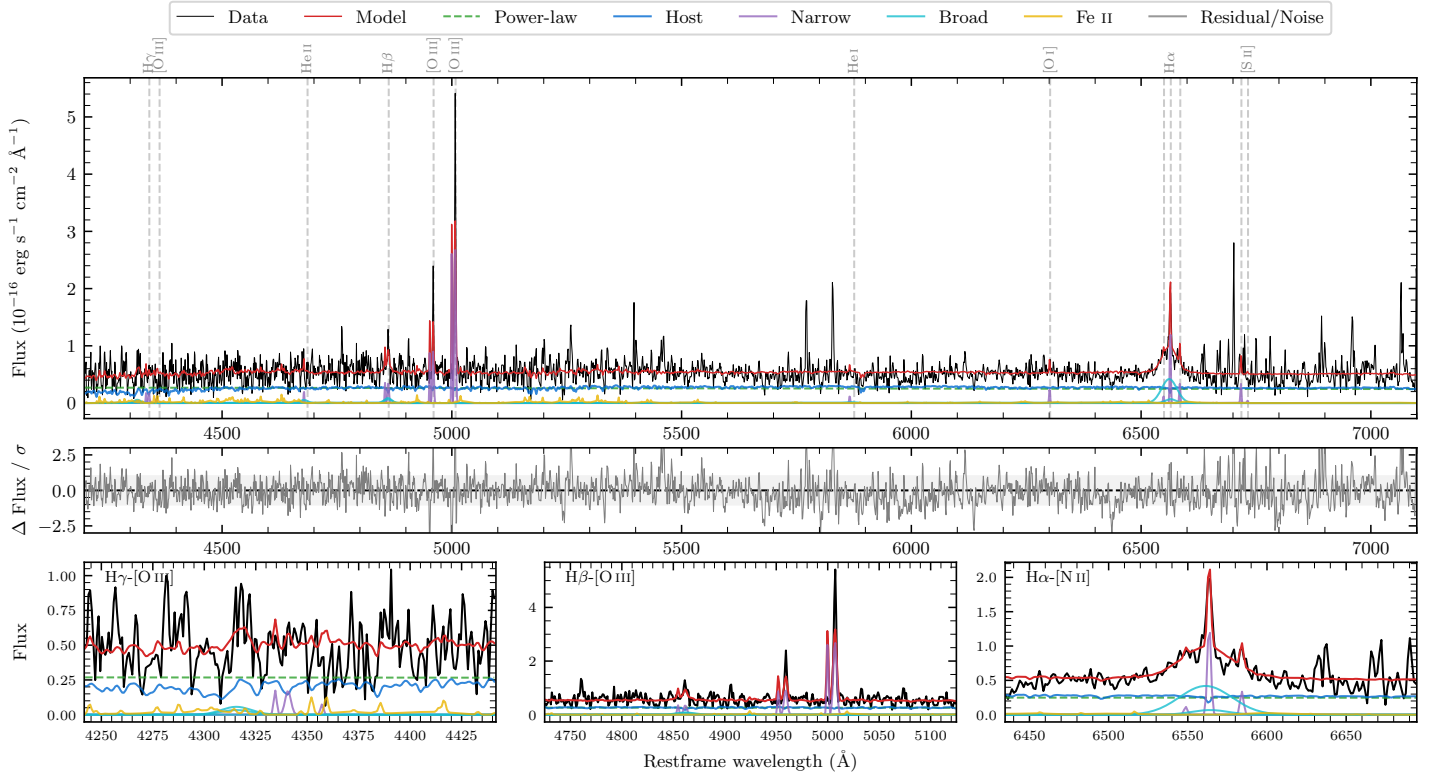
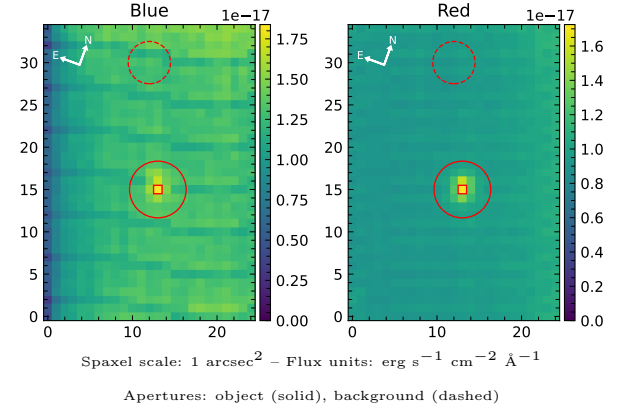


# 6dFGS gJ091214.8-050355

Spectrum ID	89398103_sp1	Spectrum Type	Bad
Alt name	g0912148-050355	Quality Flag	bad_all
$z$	0.0917	AGN reference	6dFGS
RA, Dec	138.0614, -5.0651	MW $E(B - V)$	0.022
MJD	60406.39	Power law $\alpha_\nu$	$-1.82 \pm 0.10$
SNR/ $\text{\AA}$ B/R	2.6/3.4	$\log L_{5100, \text{AGN}}$	$42.45 \pm 0.08$
Obs Airmass	1.14	$\log H\beta_{\text{Br}}/[\text{O III}]$	—
SMSS ID	89398103	$\log M_{L5100}/M_\odot$	—
Closest SMSS	None $< 15''$	$\log M_{\text{H}\alpha}/M_\odot$	$6.14 \pm 0.08$
SMSS Mean $r_{\text{psf}}$	$18.8 \pm 0.0$	$\log M_{\text{H}\beta}/M_\odot$	—
2MASS $K_{\text{ext}}$	nan $\pm$ nan	$\log M_{[\text{O III}]} / M_\odot$	—



## Emission Line Measurements

Line	$\log L$ (erg s $^{-1}$ )	FWHM (km s $^{-1}$ )	$\sigma$ (km s $^{-1}$ )	EW (Angstrom)
H $\gamma$ Narrow	$39.33 \pm 0.35$	—	$221 \pm 25$	$3.80 \pm 2.04$
<b>H<math>\gamma</math> Broad</b>	—	—	—	—
[O III] 4364	—	—	—	—
He II Narrow	$38.99 \pm 0.38$	$121 \pm 62$	$50 \pm 25$	$1.75 \pm 1.04$
He II Broad	$39.40 \pm 0.45$	$1191 \pm 62$	$505 \pm 25$	$4.52 \pm 3.63$
H $\beta$ Narrow	$39.69 \pm 0.20$	—	$221 \pm 25$	$8.77 \pm 1.82$
<b>H<math>\beta</math> Broad</b>	—	—	—	—
[O III] 5007	$40.59 \pm 0.02$	—	$221 \pm 25$	$70.46 \pm 2.04$
He I Narrow	$38.87 \pm 0.42$	$121 \pm 62$	$50 \pm 25$	$1.39 \pm 0.93$
He I Broad	—	—	—	—
[O I] 6300	$39.19 \pm 0.28$	$121 \pm 62$	$50 \pm 25$	$2.94 \pm 1.05$
H $\alpha$ Narrow	$39.93 \pm 0.05$	$121 \pm 62$	$50 \pm 25$	$16.33 \pm 0.97$
<b>H<math>\alpha</math> Broad</b>	<b><math>40.66 \pm 0.04</math></b>	<b><math>1696 \pm 95</math></b>	<b><math>625 \pm 25</math></b>	<b><math>85.03 \pm 4.27</math></b>
[N II] 6585	$39.33 \pm 0.16$	$121 \pm 62$	$50 \pm 25$	$4.10 \pm 0.98$
[S II] 6718	$39.35 \pm 0.18$	$121 \pm 62$	$50 \pm 25$	$4.23 \pm 1.23$
[S II] 6732	—	—	—	—

## Emission Summary

H $\alpha$ Broad SNR	2.37
H $\beta$ Broad SNR	0.94
H $\gamma$ Broad SNR	0.00
AGN frac	0.53
Host frac	0.47
$\log L_{5100, \text{Host}}$	42.40
Fe II/H $\beta$	—
Fe II/[O III]	0.60

## Quality Flags

spurious_hab/hbb	0/0
15100	0
balmer	2
balmer_snr	2
hb_width	2
balmer_width	2