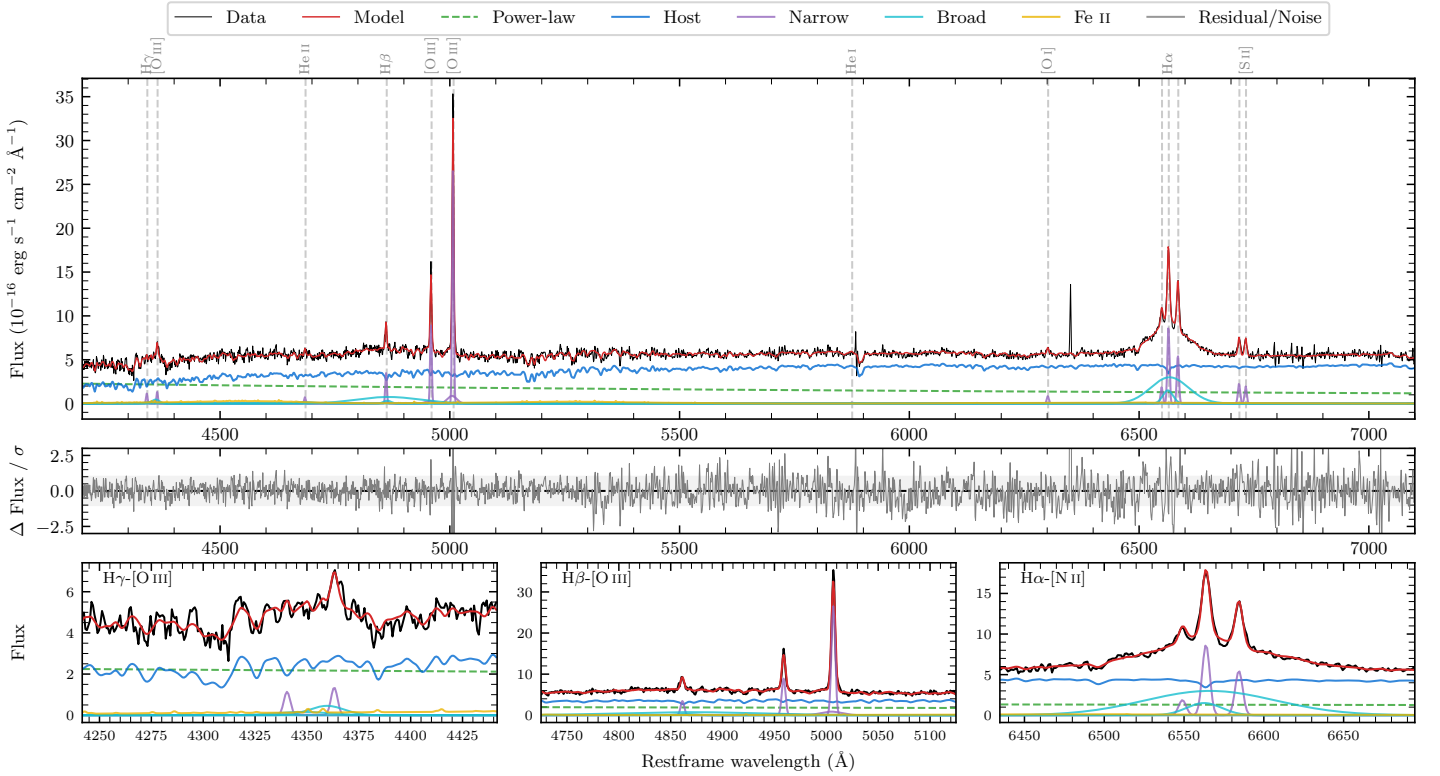
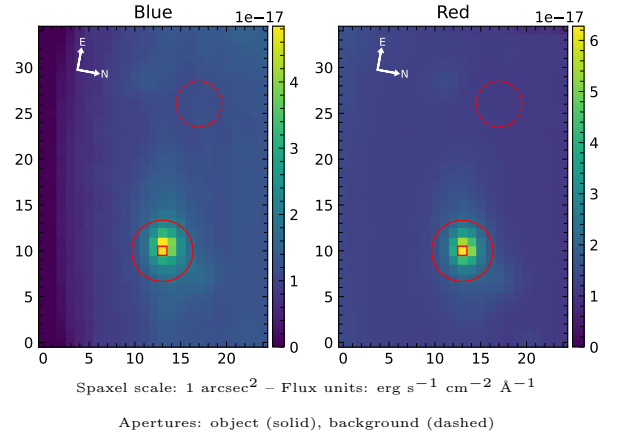


# LEDA 139169

Spectrum ID	89172892_sp1	Spectrum Type	Sy 1.5
Alt name	g0908055-082946	Quality Flag	good
$z$	0.0705	AGN reference	6dFGS
RA, Dec	137.0229, -8.4960	MW $E(B - V)$	0.047
MJD	59671.51	Power law $\alpha_\nu$	$-0.74 \pm 0.28$
SNR/ $\text{\AA}$ B/R	9.4/20.1	$\log L_{5100, \text{AGN}}$	$43.04 \pm 0.06$
Obs Airmass	1.20	$\log H\beta_{\text{Br}}/[\text{O III}]$	$-0.01 \pm 0.04$
SMSS ID	89172892	$\log M_{L5100}/M_\odot$	$8.17 \pm 0.26$
Closest SMSS	14.29", 89172891	$\log M_{\text{H}\alpha}/M_\odot$	$7.23 \pm 0.05$
SMSS Mean $r_{\text{psf}}$	$16.5 \pm 0.1$	$\log M_{\text{H}\beta}/M_\odot$	$8.18 \pm 0.26$
2MASS $K_{\text{ext}}$	$13.1 \pm 0.1$	$\log M_{[\text{O III}]} / M_\odot$	$8.32 \pm 0.26$



## Emission Line Measurements

Line	$\log L$ (erg s $^{-1}$ )	FWHM (km s $^{-1}$ )	$\sigma$ (km s $^{-1}$ )	EW (Å)
H $\gamma$ Narrow	$39.84 \pm 0.26$	$260 \pm 63$	$261 \pm 35$	$2.59 \pm 1.43$
<b>H<math>\gamma</math> Broad</b>	<b><math>40.34 \pm 0.17</math></b>	<b><math>1558 \pm 275</math></b>	<b><math>639 \pm 77</math></b>	<b><math>7.27 \pm 1.85</math></b>
[O III] 4364	$39.84 \pm 0.20$	$256 \pm 63$	$107 \pm 25$	$2.61 \pm 0.64$
He II Narrow	$39.60 \pm 0.26$	$256 \pm 63$	$107 \pm 25$	$1.63 \pm 0.62$
He II Broad	$40.11 \pm 0.31$	$3536 \pm 63$	$1502 \pm 25$	$5.38 \pm 2.24$
H $\beta$ Narrow	$40.37 \pm 0.07$	$260 \pm 63$	$261 \pm 35$	$10.20 \pm 1.42$
<b>H<math>\beta</math> Broad</b>	<b><math>41.26 \pm 0.04</math></b>	<b><math>6935 \pm 2220</math></b>	<b><math>3549 \pm 67</math></b>	<b><math>77.90 \pm 4.20</math></b>
[O III] 5007	$41.27 \pm 0.01$	$260 \pm 63$	$261 \pm 35$	$83.08 \pm 1.63$
He I Narrow	—	—	—	—
He I Broad	$39.27 \pm 0.45$	$1178 \pm 62$	$500 \pm 25$	$1.02 \pm 0.97$
[O I] 6300	$39.80 \pm 0.09$	$256 \pm 63$	$107 \pm 25$	$3.77 \pm 0.47$
H $\alpha$ Narrow	$40.82 \pm 0.01$	$256 \pm 63$	$107 \pm 25$	$42.34 \pm 0.59$
<b>H<math>\alpha</math> Broad</b>	<b><math>41.66 \pm 0.01</math></b>	<b><math>2911 \pm 174</math></b>	<b><math>1476 \pm 25</math></b>	<b><math>289.57 \pm 2.45</math></b>
[N II] 6585	$40.62 \pm 0.02$	$256 \pm 63$	$107 \pm 25$	$26.82 \pm 0.57$
[S II] 6718	$40.25 \pm 0.04$	$256 \pm 63$	$107 \pm 25$	$11.58 \pm 0.63$
[S II] 6732	$40.19 \pm 0.04$	$256 \pm 63$	$107 \pm 25$	$10.13 \pm 0.59$

## Emission Summary

H $\alpha$ Broad SNR	8.27
H $\beta$ Broad SNR	2.01
H $\gamma$ Broad SNR	1.16
AGN frac	0.35
Host frac	0.65
$\log L_{5100, \text{Host}}$	43.31
Fe II/H $\beta$	0.56
Fe II/[O III]	0.55

## Quality Flags

spurious_hab/hbb	0/0
15100	1
balmer	1
balmer_snr	1
hb_width	1
balmer_width	1