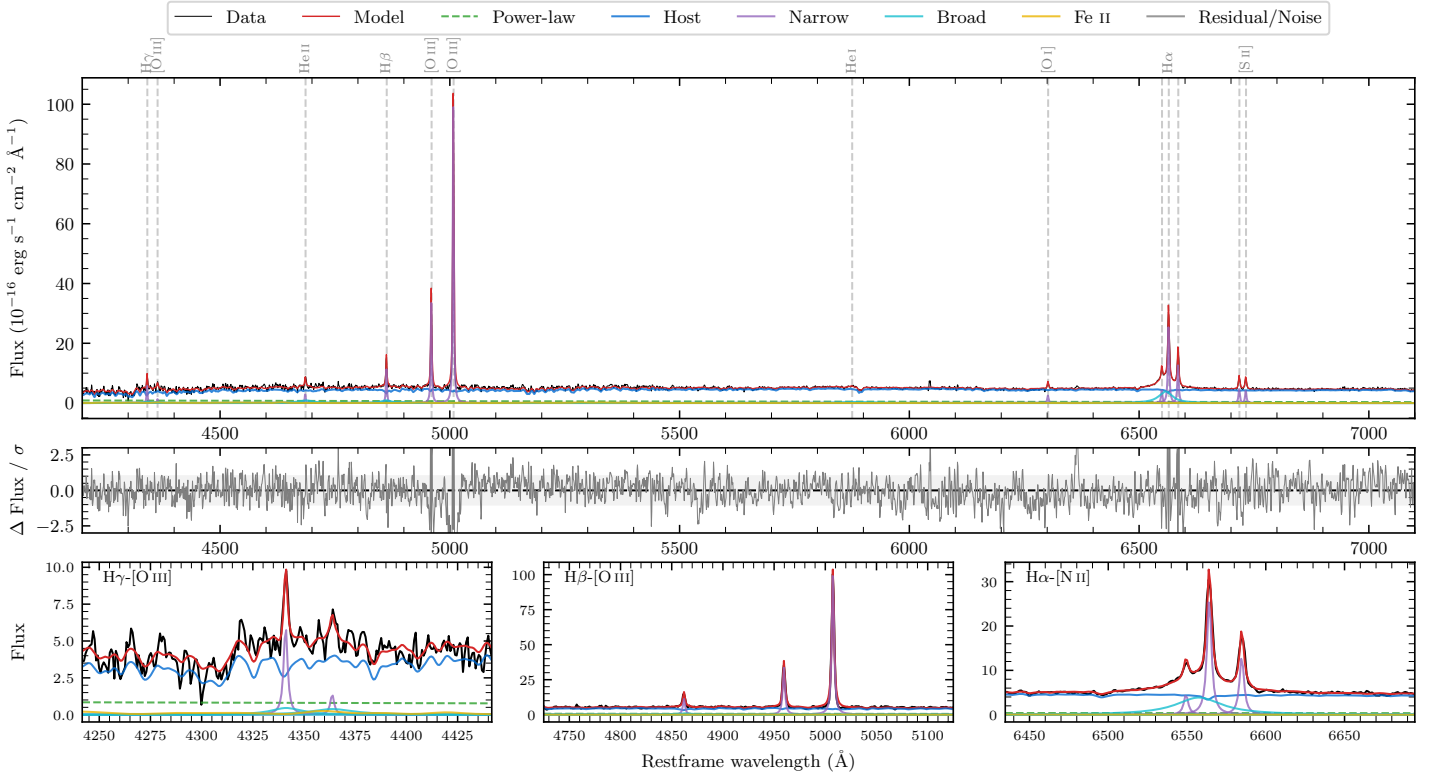
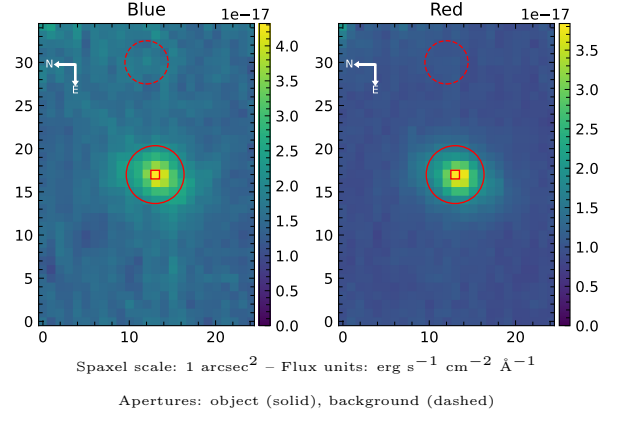


# 6dFGS gJ062959.2-480408

Spectrum ID	472992293_sp1	Spectrum Type	Sy 1.8
Alt name	g0629592-480408	Quality Flag	good
$z$	0.0427	AGN reference	6dFGS
RA, Dec	97.4967, -48.0689	MW $E(B - V)$	0.045
MJD	60288.63	Power law $\alpha_\nu$	$-0.09 \pm 0.44$
SNR/ $\text{\AA}$ B/R	8.3/17.0	$\log L_{5100, \text{AGN}}$	$42.11 \pm 0.11$
Obs Airmass	1.05	$\log H\beta_{\text{Br}}/[\text{O III}]$	$-0.83 \pm 0.07$
SMSS ID	472992293	$\log M_{L5100}/M_\odot$	$6.70 \pm 0.29$
Closest SMSS	None $< 15''$	$\log M_{\text{H}\alpha}/M_\odot$	$6.30 \pm 0.05$
SMSS Mean $r_{\text{psf}}$	$16.5 \pm 0.1$	$\log M_{\text{H}\beta}/M_\odot$	$6.73 \pm 0.29$
2MASS $K_{\text{ext}}$	$13.6 \pm 0.2$	$\log M_{[\text{O III}]} / M_\odot$	$7.25 \pm 0.29$



## Emission Line Measurements

Line	$\log L$ (erg s <sup>-1</sup> )	FWHM (km s <sup>-1</sup> )	$\sigma$ (km s <sup>-1</sup> )	EW (Å)
H $\gamma$ Narrow	$39.98 \pm 0.08$	$163 \pm 62$	$958 \pm 53$	$27.47 \pm 13.41$
<b>H<math>\gamma</math> Broad</b>	<b><math>40.14 \pm 0.17</math></b>	<b><math>2436 \pm 640</math></b>	<b><math>1636 \pm 173</math></b>	<b><math>36.23 \pm 19.02</math></b>
[O III] 4364	—	—	—	—
He II Narrow	$39.72 \pm 0.10$	$166 \pm 62$	$65 \pm 25$	$17.53 \pm 10.12$
He II Broad	$40.38 \pm 0.09$	$2414 \pm 66$	$1025 \pm 26$	$81.05 \pm 29.93$
H $\beta$ Narrow	$40.30 \pm 0.03$	$163 \pm 62$	$1118 \pm 32$	$70.90 \pm 14.29$
<b>H<math>\beta</math> Broad</b>	<b><math>40.42 \pm 0.07</math></b>	<b><math>2024 \pm 724</math></b>	<b><math>2177 \pm 165</math></b>	<b><math>94.64 \pm 28.18</math></b>
[O III] 5007	$41.25 \pm 0.01$	$163 \pm 62$	$1871 \pm 27$	$682.69 \pm 28.56$
He I Narrow	—	—	—	—
He I Broad	$40.19 \pm 0.08$	$3104 \pm 67$	$1318 \pm 27$	$80.52 \pm 28.85$
[O I] 6300	$39.75 \pm 0.04$	$166 \pm 62$	$65 \pm 25$	$33.30 \pm 9.06$
H $\alpha$ Narrow	$40.79 \pm 0.01$	$166 \pm 62$	$65 \pm 25$	$396.67 \pm 16.02$
<b>H<math>\alpha</math> Broad</b>	<b><math>40.98 \pm 0.01</math></b>	<b><math>1624 \pm 64</math></b>	<b><math>1547 \pm 25</math></b>	<b><math>607.81 \pm 31.03</math></b>
[N II] 6585	$40.49 \pm 0.01$	$166 \pm 62$	$65 \pm 25$	$200.09 \pm 15.00$
[S II] 6718	$40.05 \pm 0.02$	$166 \pm 62$	$65 \pm 25$	$75.35 \pm 12.72$
[S II] 6732	$40.01 \pm 0.02$	$166 \pm 62$	$65 \pm 25$	$68.03 \pm 12.47$

## Emission Summary

H $\alpha$ Broad SNR	6.27
H $\beta$ Broad SNR	1.66
H $\gamma$ Broad SNR	1.14
AGN frac	0.13
Host frac	0.87
$\log L_{5100, \text{Host}}$	42.94
Fe II/H $\beta$	0.72
Fe II/[O III]	0.11

## Quality Flags

spurious_hab/hbb	0/0
15100	2
balmer	1
balmer_snr	2
hb_width	2
balmer_width	0