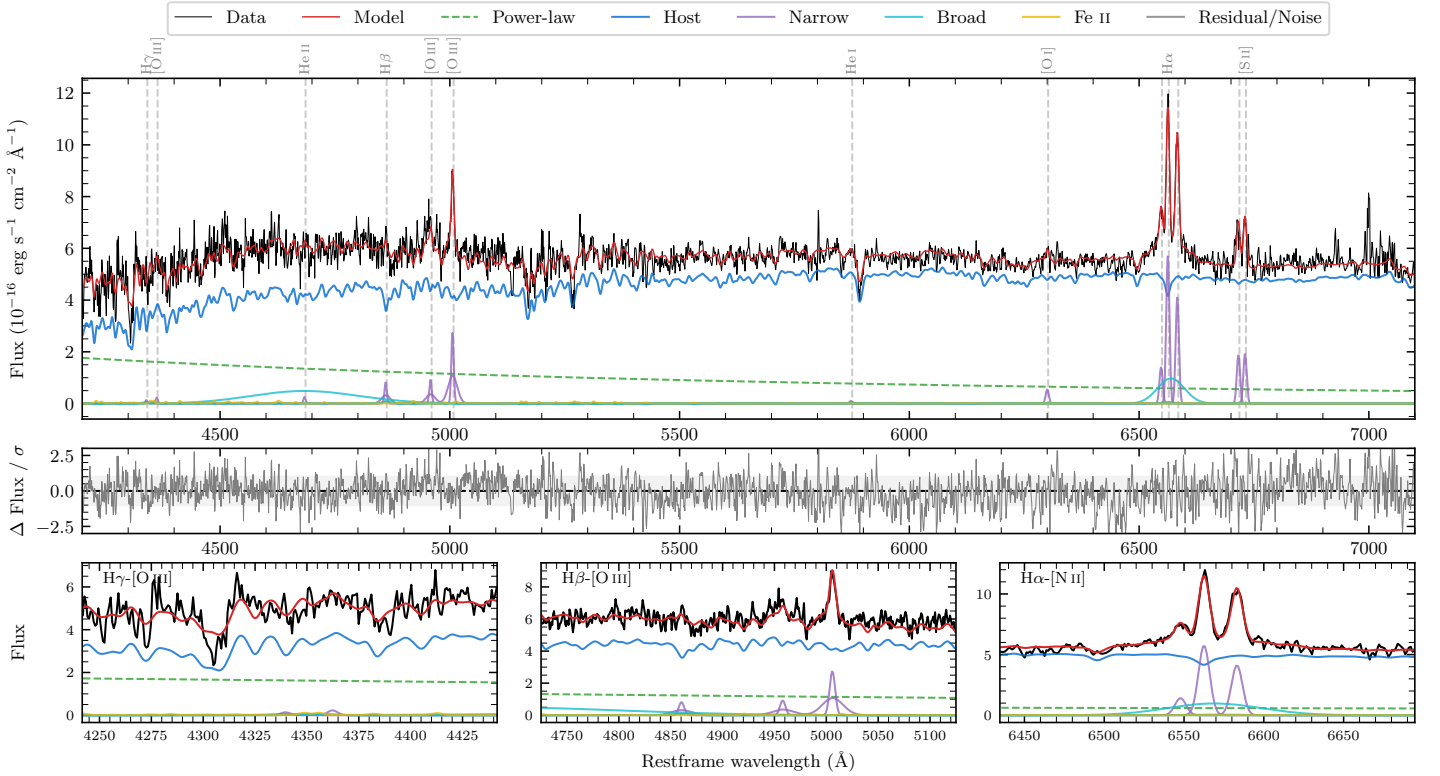
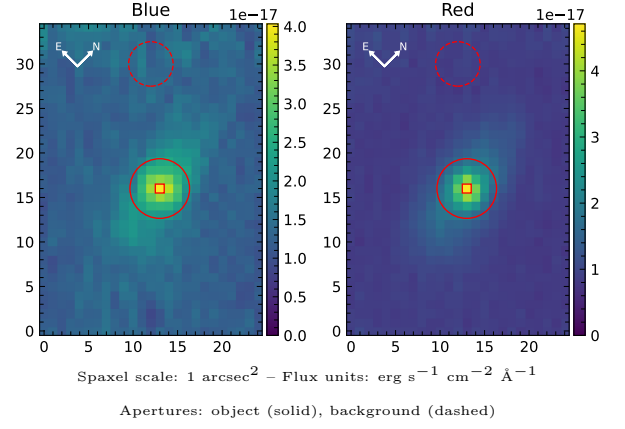


LEDA 148673

Spectrum ID	32515912_sp1	Spectrum Type	Sy 1.5+
Alt name	g0617545-314543	Quality Flag	good
z	0.0860	AGN reference	6dFGS
RA, Dec	94.4768, -31.7619	MW $E(B - V)$	0.039
MJD	60290.65	Power law α_ν	0.46 ± 0.04
SNR/ \AA B/R	12.5/23.1	$\log L_{5100, \text{AGN}}$	43.02 ± 0.02
Obs Airmass	1.01	$\log H\beta_{\text{Br}}/[\text{O III}]$	< -0.24
SMSS ID	32515912	$\log M_{L5100}/M_\odot$	—
Closest SMSS	None $< 15''$	$\log M_{\text{H}\alpha}/M_\odot$	6.97 ± 0.05
SMSS Mean r_{psf}	16.6 ± 0.2	$\log M_{\text{H}\beta}/M_\odot$	—
2MASS K_{ext}	12.8 ± 0.1	$\log M_{[\text{O III}]} / M_\odot$	—



Emission Line Measurements

Line	$\log L$ (erg s ⁻¹)	FWHM (km s ⁻¹)	σ (km s ⁻¹)	EW (Å)
H γ Narrow	—	—	—	—
Hγ Broad	—	—	—	—
[O III] 4364	39.43 ± 0.46	378 ± 62	159 ± 25	0.89 ± 0.88
He II Narrow	39.51 ± 0.39	378 ± 62	159 ± 25	1.28 ± 0.88
He II Broad	41.46 ± 0.05	17661 ± 62	7500 ± 25	115.91 ± 7.07
H β Narrow	40.43 ± 0.15	475 ± 69	473 ± 35	11.54 ± 1.89
Hβ Broad	< 40.69	—	—	—
[O III] 5007	40.96 ± 0.04	475 ± 69	473 ± 35	42.89 ± 2.13
He I Narrow	39.24 ± 0.44	378 ± 62	159 ± 25	1.20 ± 1.17
He I Broad	—	—	—	—
[O I] 6300	39.97 ± 0.10	378 ± 62	159 ± 25	7.66 ± 1.14
H α Narrow	41.01 ± 0.01	378 ± 62	159 ± 25	92.99 ± 1.27
Hα Broad	41.18 ± 0.03	3032 ± 118	1144 ± 25	136.09 ± 3.97
[N II] 6585	40.87 ± 0.02	378 ± 62	159 ± 25	67.39 ± 1.27
[S II] 6718	40.53 ± 0.03	378 ± 62	159 ± 25	32.92 ± 1.83
[S II] 6732	40.54 ± 0.03	378 ± 62	159 ± 25	33.99 ± 1.72

Emission Summary

H α Broad SNR	2.38
H β Broad SNR	0.54
H γ Broad SNR	0.00
AGN frac	0.20
Host frac	0.80
$\log L_{5100, \text{Host}}$	43.61
Fe II/H β	—
Fe II/[O III]	—

Quality Flags

spurious_hab/hbb	0/0
15100	2
balmer	2
balmer_snr	2
hb_width	2
balmer_width	2