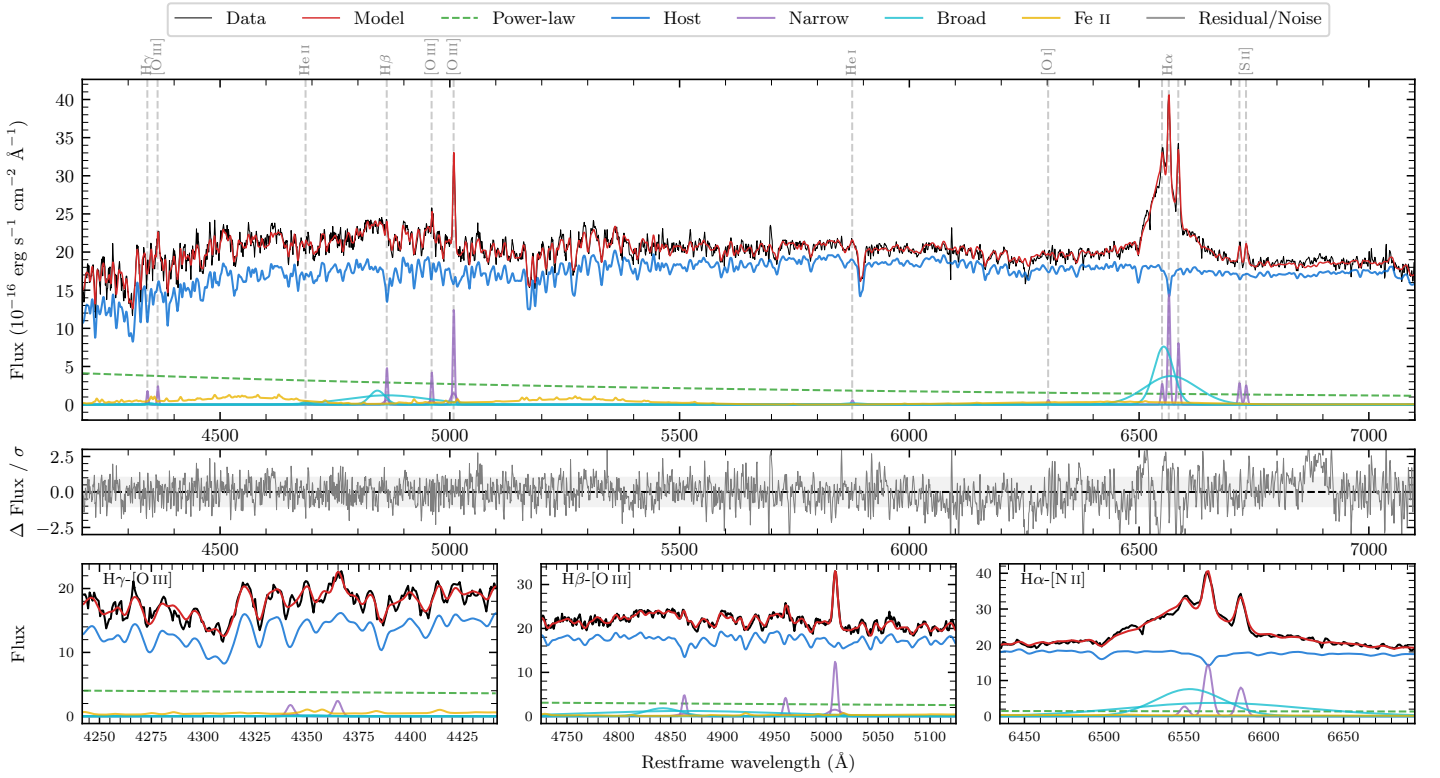
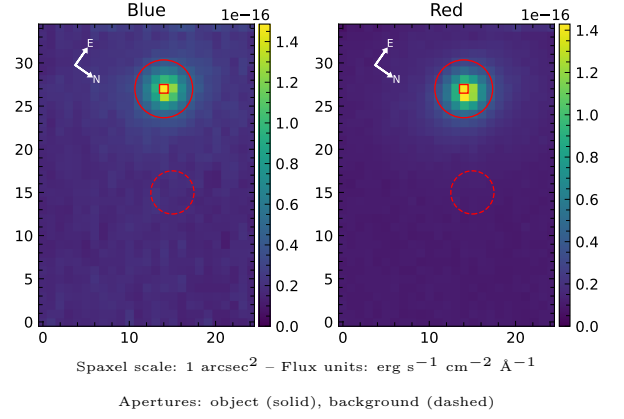


LEDA 147925

Spectrum ID	19910748_sp1	Spectrum Type	Sy 1.5
Alt name	g0546258-354848	Quality Flag	good
z	0.0346	AGN reference	6dFGS
RA, Dec	86.6077, -35.8134	MW $E(B - V)$	0.034
MJD	60611.7	Power law α_ν	0.41 ± 0.09
SNR/Å B/R	25.8/45.2	$\log L_{5100, \text{AGN}}$	42.56 ± 0.03
Obs Airmass	1.01	$\log H\beta_{\text{Br}}/[\text{O III}]$	-0.04 ± 0.35
SMSS ID	19910748	$\log M_{L5100}/M_\odot$	7.06 ± 0.04
Closest SMSS	None $< 15''$	$\log M_{\text{H}\alpha}/M_\odot$	7.08 ± 0.03
SMSS Mean r_{psf}	15.4 ± 0.1	$\log M_{\text{H}\beta}/M_\odot$	6.86 ± 0.18
2MASS K_{ext}	11.7 ± 0.1	$\log M_{[\text{O III}]} / M_\odot$	6.99 ± 0.05



Emission Line Measurements

Line	$\log L$ (erg s ⁻¹)	FWHM (km s ⁻¹)	σ (km s ⁻¹)	EW (Å)
H γ Narrow	39.49 ± 0.16	307 ± 63	219 ± 33	2.91 ± 0.90
Hγ Broad	—	—	—	—
[O III] 4364	39.49 ± 0.13	284 ± 63	120 ± 25	2.95 ± 0.55
He II Narrow	—	—	—	—
He II Broad	—	—	—	—
H β Narrow	39.97 ± 0.05	307 ± 63	219 ± 33	11.63 ± 0.93
Hβ Broad	$40.35^{+0.65}_{-0.05}$	2439 ± 39	772 ± 25	27.37 ± 1.67
[O III] 5007	40.39 ± 0.02	307 ± 63	219 ± 33	33.15 ± 1.06
He I Narrow	38.99 ± 0.23	284 ± 63	120 ± 25	1.93 ± 0.56
He I Broad	39.39 ± 0.26	2252 ± 67	956 ± 27	4.85 ± 1.61
[O I] 6300	39.05 ± 0.17	284 ± 63	120 ± 25	2.60 ± 0.67
H α Narrow	40.44 ± 0.01	284 ± 63	120 ± 25	70.76 ± 0.92
Hα Broad	41.43 ± 0.01	2908 ± 73	1557 ± 25	688.86 ± 3.84
[N II] 6585	40.18 ± 0.02	284 ± 63	120 ± 25	39.72 ± 0.85
[S II] 6718	39.74 ± 0.04	284 ± 63	120 ± 25	14.90 ± 0.86
[S II] 6732	39.69 ± 0.04	284 ± 63	120 ± 25	13.42 ± 0.82

Emission Summary

H α Broad SNR	14.07
H β Broad SNR	2.31
H γ Broad SNR	0.48
AGN frac	0.14
Host frac	0.86
$\log L_{5100, \text{Host}}$	43.37
Fe II/H β	—
Fe II/[O III]	—

Quality Flags

spurious_hab/hbb	0/1
15100	2
balmer	1
balmer_snr	2
hb_width	0
balmer_width	2