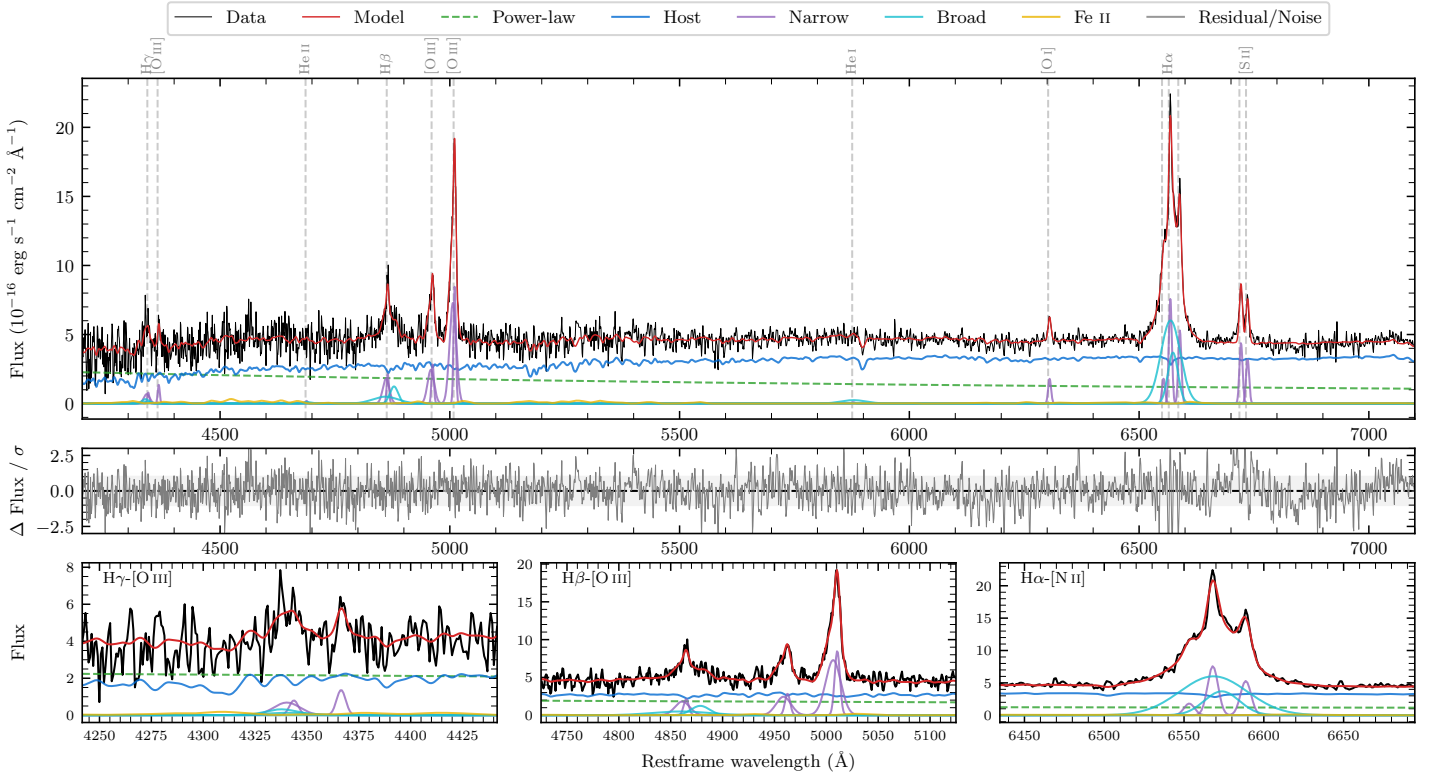
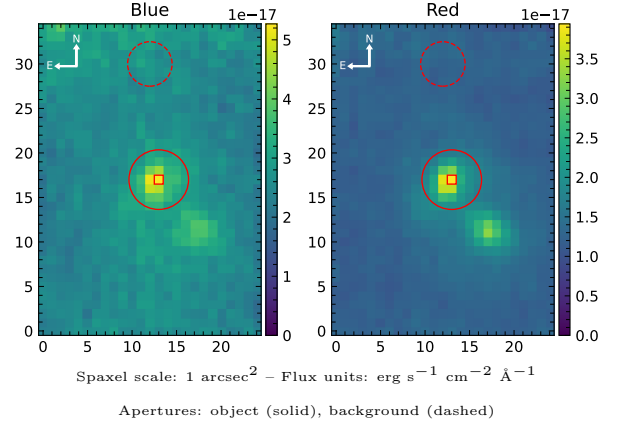


LEDA 947757

Spectrum ID	25596022_sp1	Spectrum Type	Sy 1.5
Alt name	g0518135-124635	Quality Flag	good
z	0.0559	AGN reference	6dFGS
RA, Dec	79.5563, -12.7764	MW $E(B-V)$	0.114
MJD	60262.64	Power law α_ν	-0.58 ± 0.38
SNR/Å B/R	6.4/13.1	$\log L_{5100, \text{AGN}}$	42.82 ± 0.07
Obs Airmass	1.06	$\log H\beta_{\text{Br}}/[\text{O III}]$	-0.47 ± 0.08
SMSS ID	25596022	$\log M_{L5100}/M_\odot$	6.81 ± 0.13
Closest SMSS	6.62", 25596020	$\log M_{\text{H}\alpha}/M_\odot$	6.71 ± 0.04
SMSS Mean r_{psf}	16.3 ± 0.1	$\log M_{\text{H}\beta}/M_\odot$	6.66 ± 0.14
2MASS K_{ext}	12.0 ± 0.1	$\log M_{[\text{O III}]} / M_\odot$	7.01 ± 0.12



Emission Line Measurements

Line	$\log L$ (erg s $^{-1}$)	FWHM (km s $^{-1}$)	σ (km s $^{-1}$)	EW (Å)
H γ Narrow	40.08 ± 0.21	580 ± 71	392 ± 26	7.46 ± 1.74
Hγ Broad	—	—	—	—
[O III] 4364	39.78 ± 0.19	357 ± 63	151 ± 25	3.71 ± 1.02
He II Narrow	—	—	—	—
He II Broad	—	—	—	—
H β Narrow	40.56 ± 0.05	580 ± 71	392 ± 26	26.01 ± 1.60
Hβ Broad	40.70 ± 0.08	1610 ± 219	1129 ± 95	35.86 ± 3.02
[O III] 5007	41.17 ± 0.01	580 ± 71	392 ± 26	111.98 ± 1.71
He I Narrow	—	—	—	—
He I Broad	40.14 ± 0.13	3306 ± 65	1404 ± 26	12.94 ± 2.26
[O I] 6300	40.06 ± 0.05	357 ± 63	151 ± 25	11.87 ± 0.75
H α Narrow	40.70 ± 0.02	357 ± 63	151 ± 25	55.31 ± 1.09
Hα Broad	41.53 ± 0.01	1770 ± 74	727 ± 25	370.51 ± 2.47
[N II] 6585	40.54 ± 0.02	357 ± 63	151 ± 25	38.95 ± 1.00
[S II] 6718	40.47 ± 0.02	357 ± 63	151 ± 25	33.90 ± 0.88
[S II] 6732	40.34 ± 0.03	357 ± 63	151 ± 25	25.02 ± 0.87

Emission Summary

H α Broad SNR	13.73
H β Broad SNR	2.37
H γ Broad SNR	0.85
AGN frac	0.38
Host frac	0.62
$\log L_{5100, \text{Host}}$	43.03
Fe II/H β	0.70
Fe II/[O III]	0.23

Quality Flags

spurious_hab/hbb	0/0
15100	1
balmer	1
balmer_snr	2
hb_width	1
balmer_width	1