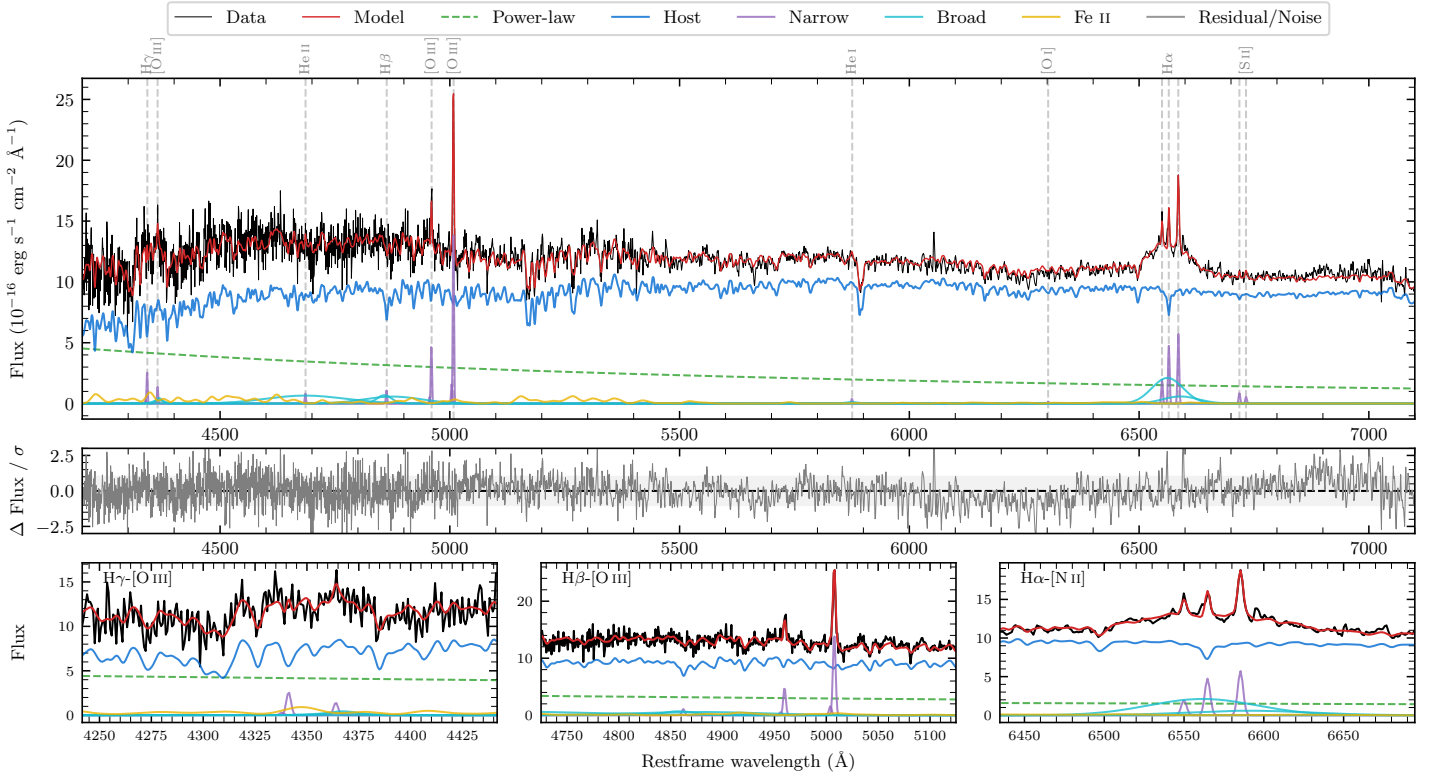
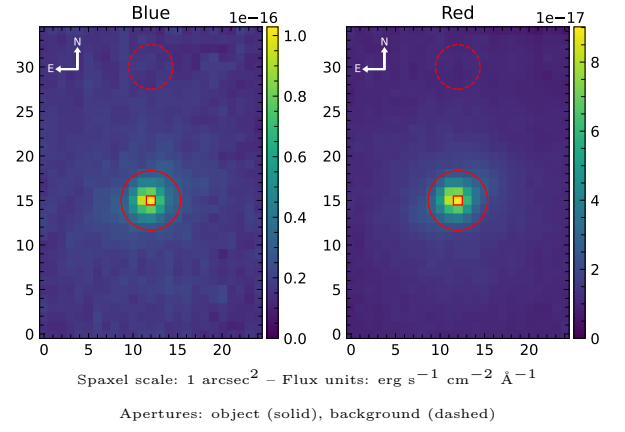


MCG-04-12-042

Spectrum ID	22573712_sp1	Spectrum Type	Sy 1.2
Alt name	g0503441-231923	Quality Flag	good
z	0.0413	AGN reference	6dFGS
RA, Dec	75.9339, -23.3231	MW $E(B - V)$	0.032
MJD	60266.6	Power law α_ν	0.47 ± 0.03
SNR/Å B/R	14.7/26.0	$\log L_{5100, \text{AGN}}$	42.76 ± 0.02
Obs Airmass	1.04	$\log H\beta_{\text{Br}}/[\text{O III}]$	0.36 ± 0.07
SMSS ID	22573712	$\log M_{L5100}/M_\odot$	7.51 ± 0.27
Closest SMSS	None < 15"	$\log M_{\text{H}\alpha}/M_\odot$	7.07 ± 0.05
SMSS Mean r_{psf}	16.0 ± 0.1	$\log M_{\text{H}\beta}/M_\odot$	7.39 ± 0.27
2MASS K_{ext}	12.1 ± 0.1	$\log M_{[\text{O III}]} / M_\odot$	7.33 ± 0.27



Emission Line Measurements

Line	$\log L$ (erg s ⁻¹)	FWHM (km s ⁻¹)	σ (km s ⁻¹)	EW (Å)
H γ Narrow	39.52 ± 0.17	195 ± 63	101 ± 26	2.01 ± 0.50
Hγ Broad	39.91 ± 0.19	1404 ± 212	409 ± 66	4.11 ± 1.58
[O III] 4364	39.21 ± 0.31	181 ± 63	77 ± 25	1.01 ± 0.44
He II Narrow	39.01 ± 0.36	181 ± 63	77 ± 25	0.76 ± 0.42
He II Broad	40.77 ± 0.07	12951 ± 62	5500 ± 25	42.78 ± 3.84
H β Narrow	39.20 ± 0.27	195 ± 63	101 ± 26	1.26 ± 0.49
Hβ Broad	40.69 ± 0.06	3724 ± 1093	2744 ± 172	39.28 ± 3.22
[O III] 5007	40.33 ± 0.02	195 ± 63	101 ± 26	18.35 ± 0.55
He I Narrow	38.79 ± 0.37	181 ± 63	77 ± 25	0.79 ± 0.45
He I Broad	39.25 ± 0.37	1621 ± 63	688 ± 25	2.24 ± 1.25
[O I] 6300	–	–	–	–
H α Narrow	39.91 ± 0.04	181 ± 63	77 ± 25	13.82 ± 0.69
Hα Broad	40.99 ± 0.02	3891 ± 89	1458 ± 30	163.21 ± 2.88
[N II] 6585	40.00 ± 0.03	181 ± 63	77 ± 25	16.87 ± 0.62
[S II] 6718	39.19 ± 0.14	181 ± 63	77 ± 25	2.78 ± 0.56
[S II] 6732	38.99 ± 0.24	181 ± 63	77 ± 25	1.74 ± 0.58

Emission Summary

H α Broad SNR	3.06
H β Broad SNR	1.48
H γ Broad SNR	1.02
AGN frac	0.25
Host frac	0.75
$\log L_{5100, \text{Host}}$	43.24
Fe II/H β	1.04
Fe II/[O III]	2.37

Quality Flags

spurious_hab/hbb	0/0
15100	2
balmer	1
balmer_snr	2
hb_width	2
balmer_width	1