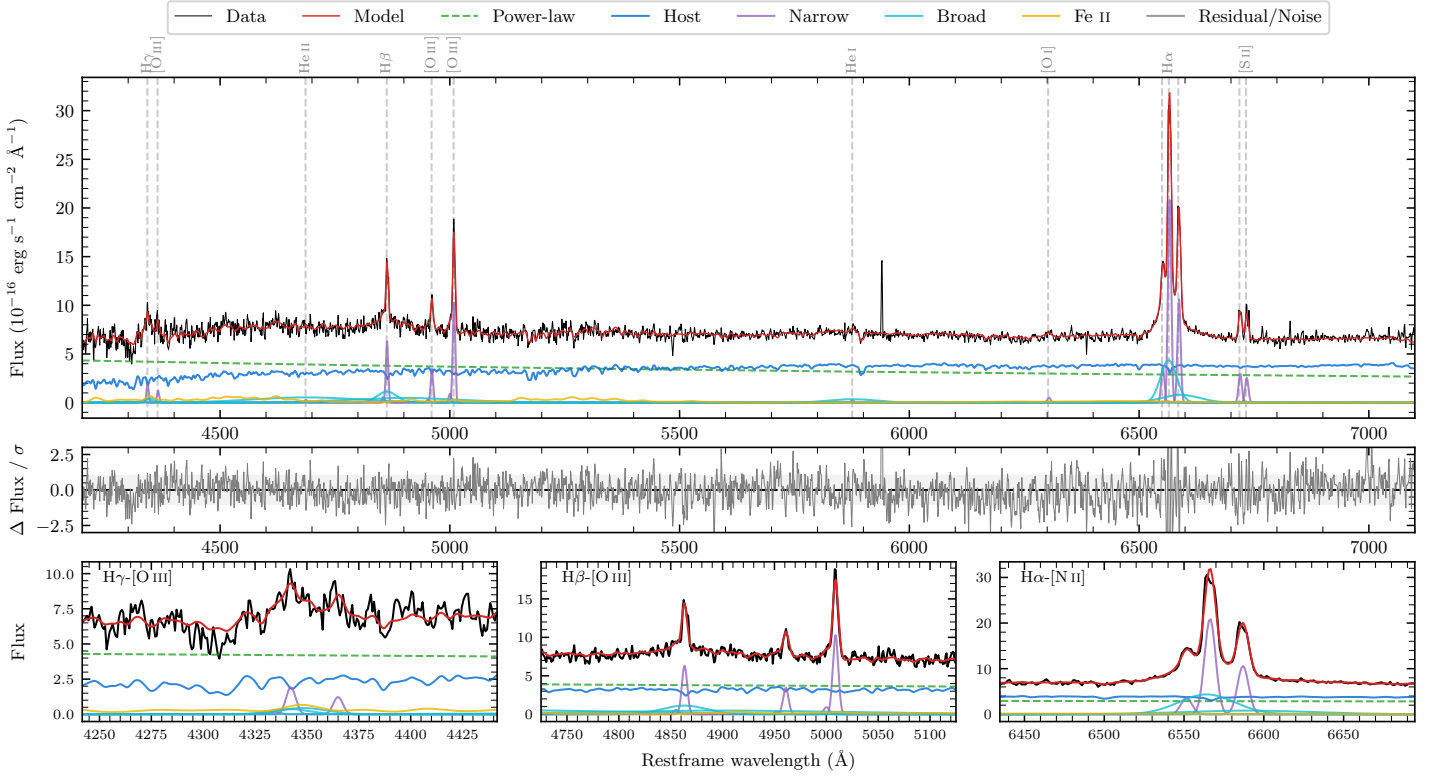
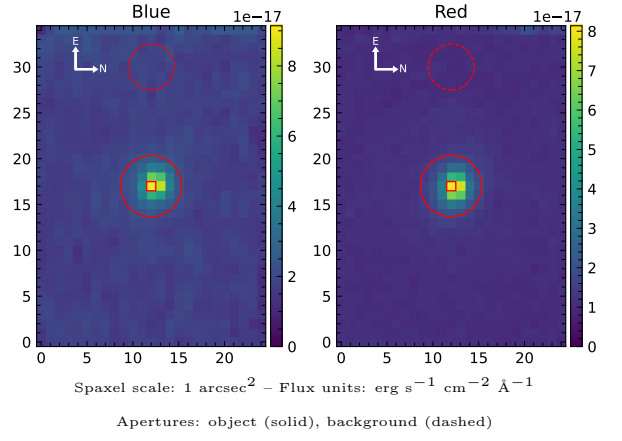


LEDA 814593

| | | | |
|----------------------------|-------------------|--|------------------|
| Spectrum ID | 22578181.sp2 | Spectrum Type | Sy 1.5 |
| Alt name | g0444039-222446 | Quality Flag | good |
| z | 0.0755 | AGN reference | 6dFGS |
| RA, Dec | 71.0164, -22.4130 | MW $E(B - V)$ | 0.040 |
| MJD | 60589.73 | Power law α_ν | -1.08 ± 0.22 |
| SNR/Å B/R | 12.2/22.9 | $\log L_{5100, \text{AGN}}$ | 43.41 ± 0.03 |
| Obs Airmass | 1.02 | $\log H\beta_{\text{Br}}/[\text{O III}]$ | -0.10 ± 0.31 |
| SMSS ID | 22578181 | $\log M_{L5100}/M_\odot$ | 7.62 ± 0.03 |
| Closest SMSS | None $< 15''$ | $\log M_{\text{H}\alpha}/M_\odot$ | 6.90 ± 0.03 |
| SMSS Mean r_{psf} | 16.7 ± 0.1 | $\log M_{\text{H}\beta}/M_\odot$ | 7.33 ± 0.15 |
| 2MASS K_{ext} | 13.1 ± 0.1 | $\log M_{[\text{O III}]} / M_\odot$ | 7.51 ± 0.04 |



Emission Line Measurements

| Line | $\log L$ (erg s $^{-1}$) | FWHM (km s $^{-1}$) | σ (km s $^{-1}$) | EW (Å) |
|-----------------------------------|---|----------------------------------|---------------------------------|-------------------------------------|
| H γ Narrow | 40.26 ± 0.13 | 376 ± 63 | 214 ± 28 | 3.09 ± 0.49 |
| Hγ Broad | 40.55 ± 0.14 | 1732 ± 143 | 642 ± 48 | 5.45 ± 0.95 |
| [O III] 4364 | 40.03 ± 0.16 | 373 ± 63 | 158 ± 25 | 1.82 ± 0.43 |
| He II Narrow | 39.45 ± 0.38 | 373 ± 63 | 158 ± 25 | 0.51 ± 0.37 |
| He II Broad | — | — | — | — |
| H β Narrow | 40.82 ± 0.04 | 376 ± 63 | 214 ± 28 | 12.55 ± 0.62 |
| Hβ Broad | $40.95^{+0.55}_{-0.06}$ | 3067 ± 76 | 1141 ± 35 | 17.06 ± 1.27 |
| [O III] 5007 | 41.05 ± 0.02 | 376 ± 63 | 214 ± 28 | 21.68 ± 0.50 |
| He I Narrow | 39.45 ± 0.29 | 373 ± 63 | 158 ± 25 | 0.64 ± 0.29 |
| He I Broad | 40.84 ± 0.06 | 6189 ± 85 | 2628 ± 35 | 15.43 ± 1.18 |
| [O I] 6300 | 39.82 ± 0.12 | 373 ± 63 | 158 ± 25 | 1.59 ± 0.26 |
| H α Narrow | 41.43 ± 0.01 | 373 ± 63 | 158 ± 25 | 67.88 ± 0.39 |
| Hα Broad | 41.61 ± 0.01 | 2071 ± 71 | 919 ± 30 | 102.52 ± 1.19 |
| [N II] 6585 | 41.14 ± 0.01 | 373 ± 63 | 158 ± 25 | 34.55 ± 0.35 |
| [S II] 6718 | 40.60 ± 0.02 | 373 ± 63 | 158 ± 25 | 10.12 ± 0.38 |
| [S II] 6732 | 40.53 ± 0.04 | 373 ± 63 | 158 ± 25 | 8.67 ± 0.47 |

Emission Summary

| | |
|------------------------------|-------|
| H α Broad SNR | 8.53 |
| H β Broad SNR | 1.93 |
| H γ Broad SNR | 1.51 |
| AGN frac | 0.54 |
| Host frac | 0.46 |
| $\log L_{5100, \text{Host}}$ | 43.35 |
| Fe II/H β | — |
| Fe II/[O III] | — |

Quality Flags

| | |
|------------------|-----|
| spurious_hab/hbb | 0/1 |
| 15100 | 0 |
| balmer | 1 |
| balmer_snr | 2 |
| hb_width | 0 |
| balmer_width | 0 |