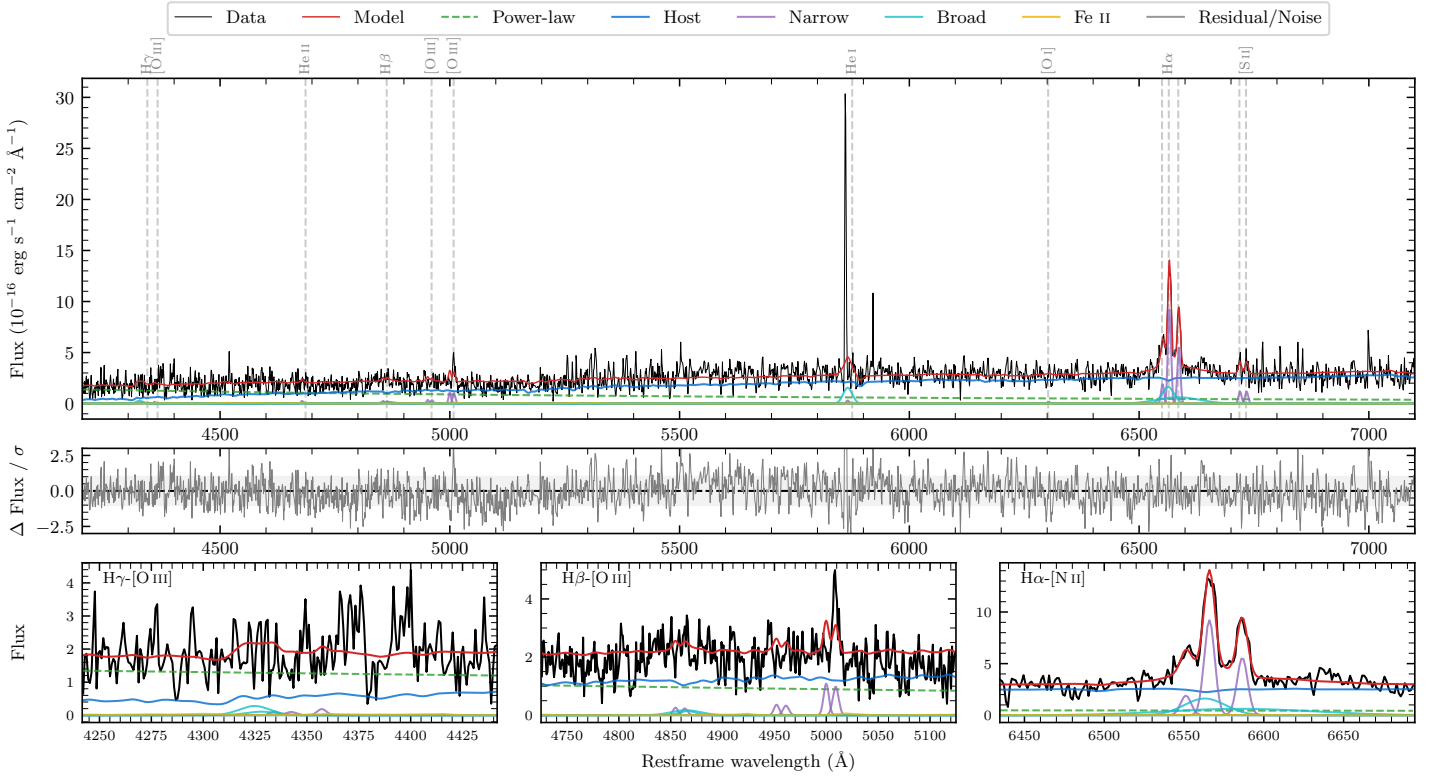
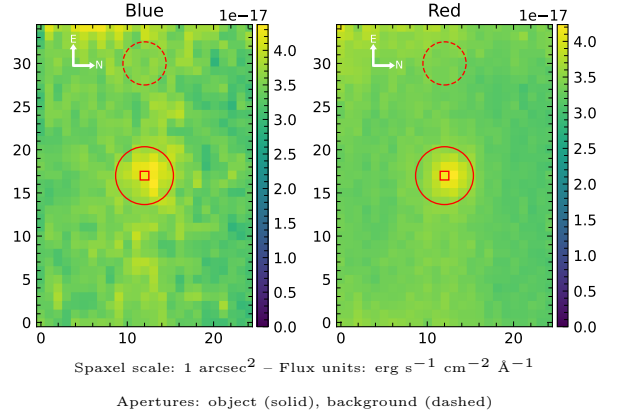


LEDA 814593

Spectrum ID	22578181.sp1	Spectrum Type	Bad
Alt name	g0444039-222446	Quality Flag	bad_all
z	0.0755	AGN reference	6dFGS
RA, Dec	71.0164, -22.4130	MW $E(B - V)$	0.040
MJD	60296.54	Power law α_ν	0.49 ± 0.01
SNR/Å B/R	2.7/3.7	$\log L_{5100, \text{AGN}}$	42.78 ± 0.05
Obs Airmass	1.01	$\log H\beta_{\text{Br}} / [\text{O III}]$	—
SMSS ID	22578181	$\log M_{L5100} / M_\odot$	—
Closest SMSS	None < 15"	$\log M_{\text{H}\alpha} / M_\odot$	6.53 ± 0.10
SMSS Mean r_{psf}	16.7 ± 0.1	$\log M_{\text{H}\beta} / M_\odot$	—
2MASS K_{ext}	13.1 ± 0.1	$\log M_{[\text{O III}]} / M_\odot$	—



Emission Line Measurements

Line	$\log L$ (erg s ⁻¹)	FWHM (km s ⁻¹)	σ (km s ⁻¹)	EW (Å)
H γ Narrow	—	—	—	—
Hγ Broad	—	—	—	—
[O III] 4364	—	—	—	—
He II Narrow	39.37 ± 0.47	361 ± 62	151 ± 25	1.59 ± 1.58
He II Broad	—	—	—	—
H β Narrow	39.68 ± 0.43	—	317 ± 25	3.62 ± 1.90
Hβ Broad	—	—	—	—
[O III] 5007	40.32 ± 0.10	—	317 ± 25	16.76 ± 2.19
He I Narrow	—	—	—	—
He I Broad	40.76 ± 0.09	1178 ± 62	500 ± 25	68.47 ± 8.58
[O I] 6300	—	—	—	—
H α Narrow	41.06 ± 0.02	361 ± 62	151 ± 25	180.99 ± 5.37
Hα Broad	41.26 ± 0.06	1721 ± 164	1173 ± 83	293.33 ± 20.32
[N II] 6585	40.84 ± 0.03	361 ± 62	151 ± 25	110.73 ± 5.06
[S II] 6718	40.18 ± 0.15	361 ± 62	151 ± 25	25.31 ± 5.66
[S II] 6732	40.18 ± 0.19	361 ± 62	151 ± 25	25.32 ± 6.84

Emission Summary

H α Broad SNR	2.58
H β Broad SNR	0.49
H γ Broad SNR	0.00
AGN frac	0.39
Host frac	0.60
$\log L_{5100, \text{Host}}$	42.97
Fe II/H β	—
Fe II/[O III]	—

Quality Flags

spurious_hab/hbb	0/0
15100	2
balmer	2
balmer_snr	2
hb_width	2
balmer_width	2