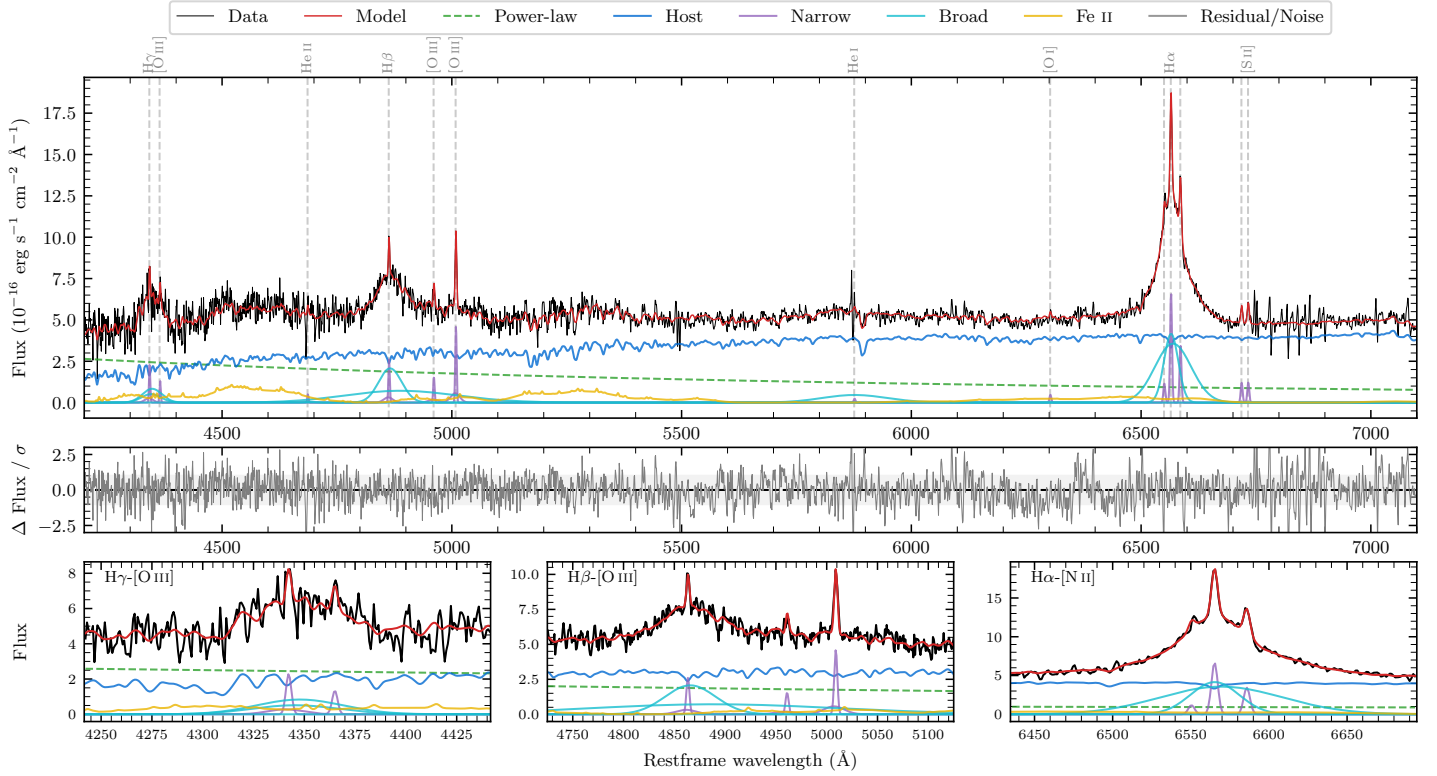
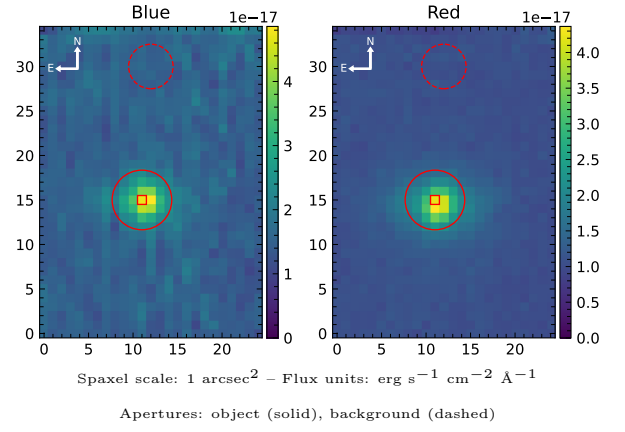


LEDA 658733

Spectrum ID	19246011.sp2	Spectrum Type	Sy 1.2
Alt name	g0440448-344151	Quality Flag	good
z	0.0734	AGN reference	6dFGS
RA, Dec	70.1864, -34.6975	MW $E(B - V)$	0.024
MJD	60585.74	Power law α_ν	0.35 ± 0.13
SNR/Å B/R	10.7/19.3	$\log L_{5100, \text{AGN}}$	43.05 ± 0.03
Obs Airmass	1.00	$\log H\beta_{\text{Br}}/[\text{O III}]$	0.60 ± 0.25
SMSS ID	19246011	$\log M_{L5100}/M_\odot$	7.61 ± 0.03
Closest SMSS	None < 15"	$\log M_{\text{H}\alpha}/M_\odot$	7.18 ± 0.03
SMSS Mean r_{psf}	16.4 ± 0.1	$\log M_{\text{H}\beta}/M_\odot$	7.62 ± 0.12
2MASS K_{ext}	13.0 ± 0.1	$\log M_{[\text{O III}]} / M_\odot$	7.46 ± 0.05



Emission Line Measurements

Line	$\log L$ (erg s $^{-1}$)	FWHM (km s $^{-1}$)	σ (km s $^{-1}$)	EW (Å)
H γ Narrow	40.29 ± 0.11	241 ± 63	408 ± 45	6.06 ± 1.18
Hγ Broad	41.02 ± 0.06	3454 ± 87	1272 ± 32	31.64 ± 1.94
[O III] 4364	39.80 ± 0.17	220 ± 63	93 ± 25	2.01 ± 0.48
He II Narrow	39.41 ± 0.29	220 ± 63	93 ± 25	0.96 ± 0.43
He II Broad	—	—	—	—
H β Narrow	40.39 ± 0.08	241 ± 63	408 ± 45	10.09 ± 1.36
Hβ Broad	$41.26^{+0.43}_{-0.03}$	3626 ± 92	1345 ± 40	74.26 ± 2.24
[O III] 5007	40.65 ± 0.05	241 ± 63	408 ± 45	19.70 ± 1.43
He I Narrow	39.20 ± 0.35	220 ± 63	93 ± 25	1.00 ± 0.74
He I Broad	41.07 ± 0.04	8488 ± 181	3605 ± 76	73.09 ± 3.31
[O I] 6300	39.52 ± 0.15	220 ± 63	93 ± 25	2.46 ± 0.53
H α Narrow	40.68 ± 0.02	220 ± 63	93 ± 25	39.25 ± 0.80
Hα Broad	41.86 ± 0.01	2404 ± 78	1210 ± 25	596.56 ± 3.36
[N II] 6585	40.39 ± 0.03	220 ± 63	93 ± 25	20.45 ± 0.72
[S II] 6718	39.94 ± 0.06	220 ± 63	93 ± 25	7.64 ± 0.66
[S II] 6732	39.96 ± 0.06	220 ± 63	93 ± 25	7.93 ± 0.72

Emission Summary

H α Broad SNR	15.27
H β Broad SNR	4.11
H γ Broad SNR	2.73
AGN frac	0.37
Host frac	0.63
$\log L_{5100, \text{Host}}$	43.28
Fe II/H β	—
Fe II/[O III]	—

Quality Flags

spurious_hab/hbb	0/2
15100	1
balmer	0
balmer_snr	1
hb_width	0
balmer_width	0