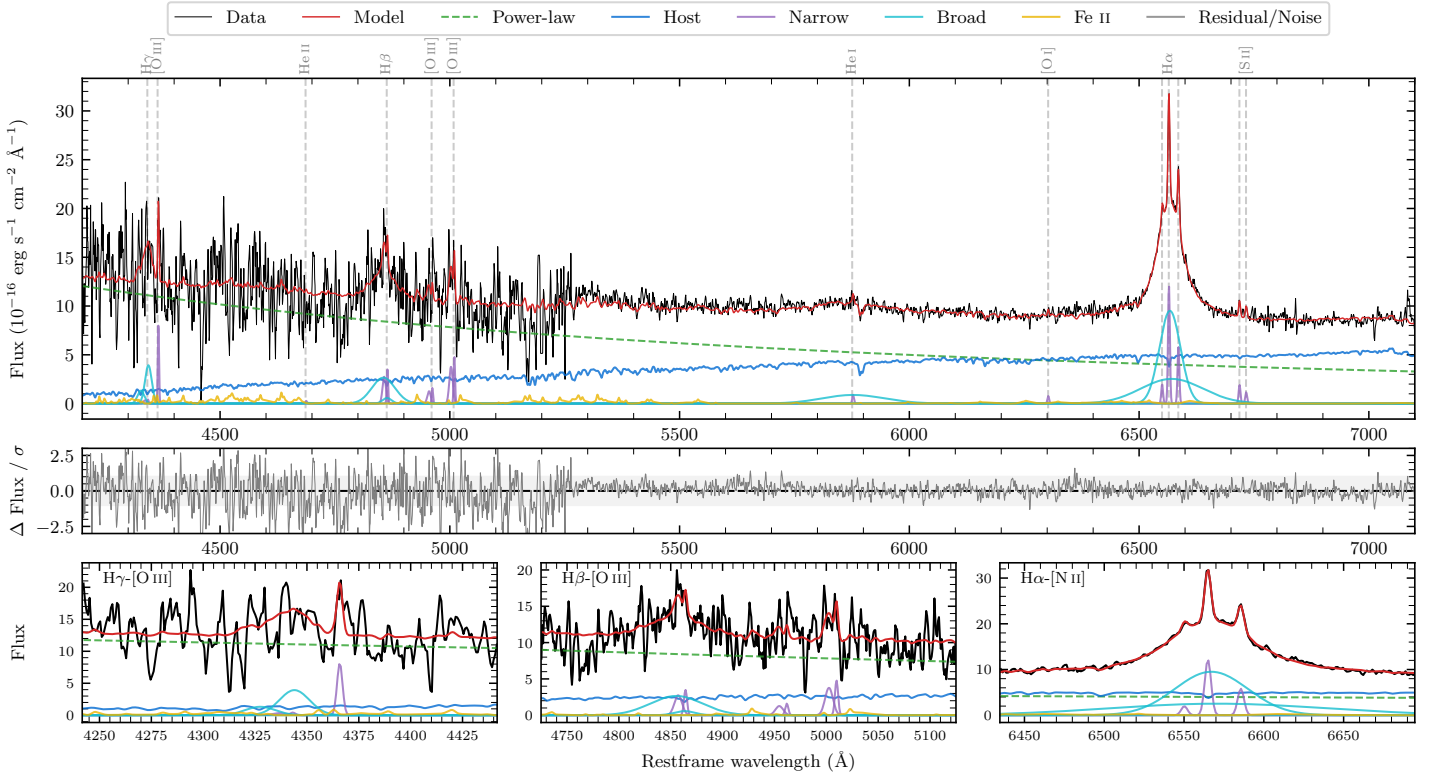
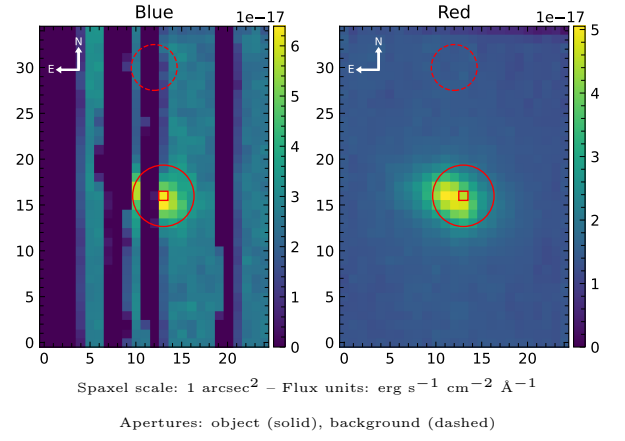


LEDA 658733

Spectrum ID	19246011.sp1	Spectrum Type	Bad
Alt name	g0440448-344151	Quality Flag	bad_blue
z	0.0736	AGN reference	6dFGS
RA, Dec	70.1864, -34.6975	MW $E(B - V)$	0.024
MJD	60254.7	Power law α_ν	0.47 ± 0.03
SNR/ \AA B/R	6.3/8.5	$\log L_{5100, \text{AGN}}$	43.70 ± 0.02
Obs Airmass	1.03	$\log H\beta_{\text{Br}}/[\text{O III}]$	0.54 ± 0.09
SMSS ID	19246011	$\log M_{L5100}/M_\odot$	7.80 ± 0.09
Closest SMSS	None $< 15''$	$\log M_{\text{H}\alpha}/M_\odot$	7.50 ± 0.03
SMSS Mean r_{psf}	16.4 ± 0.1	$\log M_{\text{H}\beta}/M_\odot$	7.60 ± 0.10
2MASS K_{ext}	13.0 ± 0.1	$\log M_{[\text{O III}]} / M_\odot$	7.48 ± 0.10



Emission Line Measurements

Line	$\log L$ (erg s ⁻¹)	FWHM (km s ⁻¹)	σ (km s ⁻¹)	EW (Å)
H γ Narrow	–	–	–	–
Hγ Broad	41.13 ± 0.09	1447 ± 301	607 ± 46	9.21 ± 0.99
[O III] 4364	40.58 ± 0.10	216 ± 63	91 ± 25	2.66 ± 0.39
He II Narrow	–	–	–	–
He II Broad	–	–	–	–
H β Narrow	40.73 ± 0.14	–	281 ± 25	4.90 ± 0.65
Hβ Broad	41.42 ± 0.07	3263 ± 339	1279 ± 40	23.13 ± 1.68
[O III] 5007	40.88 ± 0.07	–	281 ± 25	7.43 ± 0.67
He I Narrow	39.75 ± 0.37	216 ± 63	91 ± 25	0.83 ± 0.69
He I Broad	41.32 ± 0.09	8079 ± 63	3431 ± 25	30.57 ± 3.07
[O I] 6300	39.72 ± 0.34	216 ± 63	91 ± 25	0.90 ± 0.51
H α Narrow	40.93 ± 0.04	216 ± 63	91 ± 25	16.35 ± 0.76
Hα Broad	42.14 ± 0.01	2852 ± 82	1475 ± 47	261.89 ± 4.20
[N II] 6585	40.61 ± 0.07	216 ± 63	91 ± 25	7.89 ± 0.70
[S II] 6718	40.13 ± 0.17	216 ± 63	91 ± 25	2.78 ± 0.69
[S II] 6732	39.92 ± 0.26	216 ± 63	91 ± 25	1.71 ± 0.64

Emission Summary

H α Broad SNR	6.62
H β Broad SNR	1.82
H γ Broad SNR	2.23
AGN frac	0.75
Host frac	0.25
$\log L_{5100, \text{Host}}$	43.23
Fe II/H β	0.62
Fe II/[O III]	2.08

Quality Flags

spurious_hab/hbb	0/0
15100	2
balmer	1
balmer_snr	2
hb_width	0
balmer_width	0