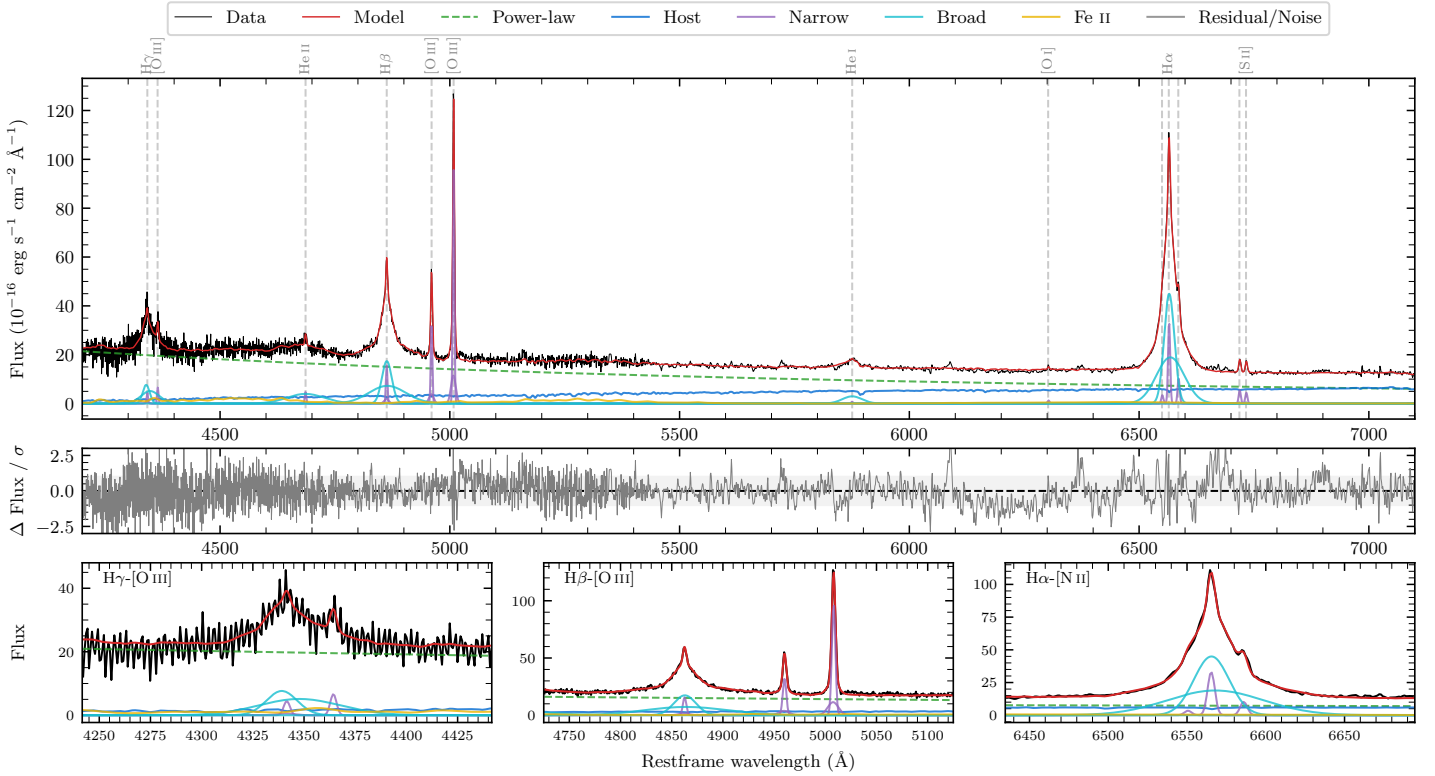
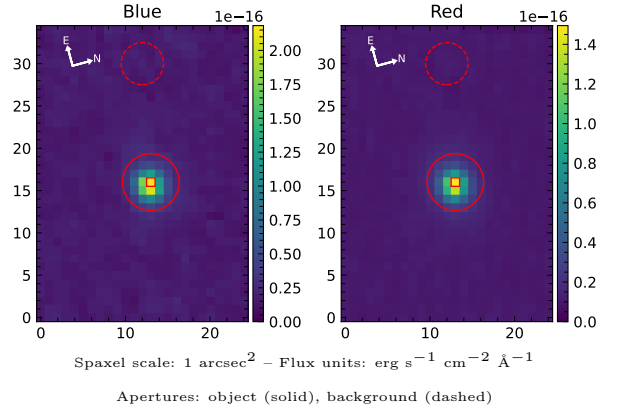


LEDA 3095687

Spectrum ID	24968941_sp1	Spectrum Type	Sy 1.2
Alt name	g0431371-024124	Quality Flag	good
z	0.0421	AGN reference	6dFGS
RA, Dec	67.9045, -2.6900	MW $E(B - V)$	0.039
MJD	60266.58	Power law α_ν	0.42 ± 0.06
SNR/Å B/R	12.8/20.0	$\log L_{5100, \text{AGN}}$	43.45 ± 0.01
Obs Airmass	1.17	$\log H\beta_{\text{Br}}/[\text{O III}]$	0.32 ± 0.01
SMSS ID	24968941	$\log M_{L5100}/M_\odot$	7.27 ± 0.04
Closest SMSS	None < 15"	$\log M_{\text{H}\alpha}/M_\odot$	6.90 ± 0.04
SMSS Mean r_{psf}	15.8 ± 0.0	$\log M_{\text{H}\beta}/M_\odot$	7.31 ± 0.04
2MASS K_{ext}	12.8 ± 0.1	$\log M_{[\text{O III}]} / M_\odot$	7.31 ± 0.04



Emission Line Measurements

Line	$\log L$ (erg s ⁻¹)	FWHM (km s ⁻¹)	σ (km s ⁻¹)	EW (Å)
H γ Narrow	40.00 ± 0.18	268 ± 63	186 ± 28	1.21 ± 0.34
Hγ Broad	41.24 ± 0.03	1758 ± 204	901 ± 60	21.04 ± 0.76
[O III] 4364	40.04 ± 0.11	249 ± 63	105 ± 25	1.35 ± 0.21
He II Narrow	39.93 ± 0.11	249 ± 63	105 ± 25	1.24 ± 0.20
He II Broad	41.24 ± 0.03	6118 ± 292	2598 ± 124	25.60 ± 1.02
H β Narrow	40.59 ± 0.04	268 ± 63	186 ± 28	6.21 ± 0.37
Hβ Broad	41.72 ± 0.01	2003 ± 80	1413 ± 48	83.45 ± 1.02
[O III] 5007	41.39 ± 0.01	268 ± 63	186 ± 28	42.50 ± 0.39
He I Narrow	39.21 ± 0.28	249 ± 63	105 ± 25	0.41 ± 0.17
He I Broad	40.83 ± 0.03	2557 ± 131	1086 ± 55	17.35 ± 0.62
[O I] 6300	39.50 ± 0.14	249 ± 63	105 ± 25	0.94 ± 0.19
H α Narrow	40.92 ± 0.02	249 ± 63	105 ± 25	27.22 ± 0.40
Hα Broad	42.07 ± 0.01	1494 ± 65	773 ± 25	387.62 ± 0.99
[N II] 6585	40.40 ± 0.03	249 ± 63	105 ± 25	8.48 ± 0.33
[S II] 6718	40.14 ± 0.03	249 ± 63	105 ± 25	4.80 ± 0.23
[S II] 6732	40.06 ± 0.04	249 ± 63	105 ± 25	3.98 ± 0.23

Emission Summary

H α Broad SNR	40.95
H β Broad SNR	15.83
H γ Broad SNR	7.85
AGN frac	0.81
Host frac	0.19
$\log L_{5100, \text{Host}}$	42.83
Fe II/H β	0.45
Fe II/[O III]	0.95

Quality Flags

spurious_hab/hbb	0/0
15100	2
balmer	0
balmer_snr	0
hb_width	1
balmer_width	0