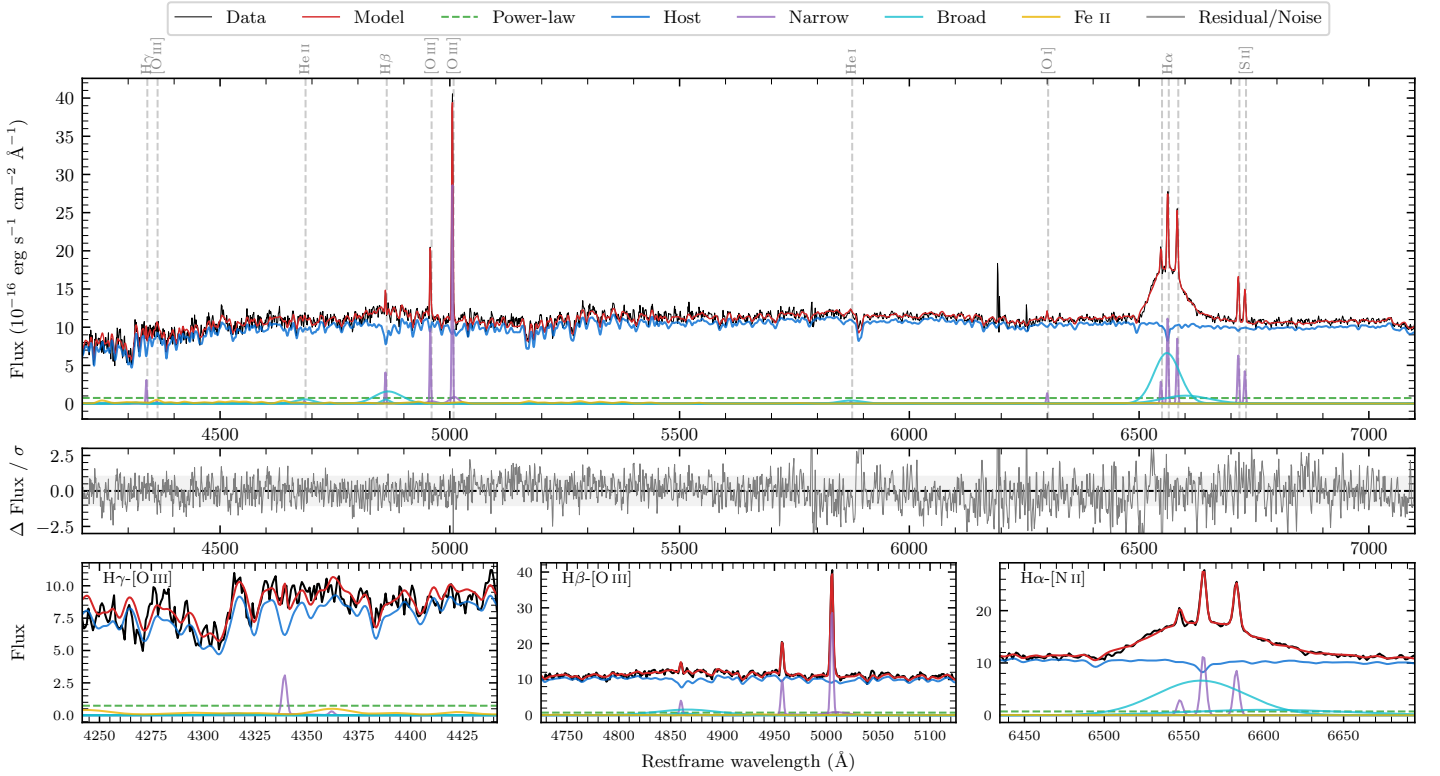
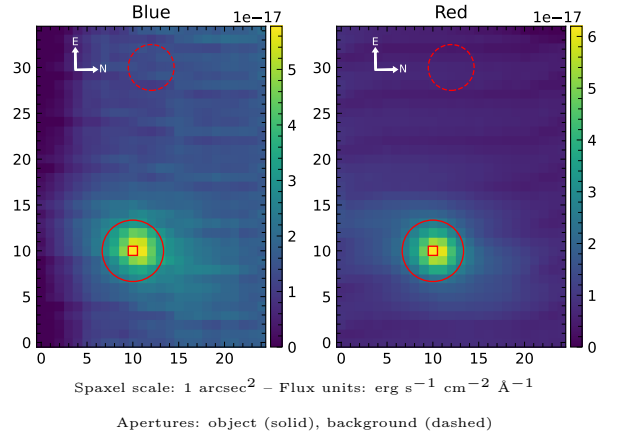


LEDA 1088718

Spectrum ID	24905969_sp1	Spectrum Type	Sy 1.5
Alt name	g0418562-023322	Quality Flag	good
z	0.0176	AGN reference	6dFGS
RA, Dec	64.7343, -2.5561	MW $E(B - V)$	0.034
MJD	59904.67	Power law α_ν	-1.96 ± 0.04
SNR/Å B/R	16.0/40.2	$\log L_{5100, \text{AGN}}$	41.40 ± 0.11
Obs Airmass	1.25	$\log H\beta_{\text{Br}}/[\text{O III}]$	0.04 ± 0.04
SMSS ID	24905969	$\log M_{L5100}/M_\odot$	6.85 ± 0.16
Closest SMSS	13.17", 24905972	$\log M_{\text{H}\alpha}/M_\odot$	6.68 ± 0.06
SMSS Mean r_{psf}	15.3 ± 0.1	$\log M_{\text{H}\beta}/M_\odot$	6.97 ± 0.17
2MASS K_{ext}	11.5 ± 0.1	$\log M_{[\text{O III}]} / M_\odot$	7.04 ± 0.16



Emission Line Measurements

Line	$\log L$ (erg s ⁻¹)	FWHM (km s ⁻¹)	σ (km s ⁻¹)	EW (Å)
H γ Narrow	38.87 ± 0.12	196 ± 62	282 ± 36	14.97 ± 5.72
Hγ Broad	—	—	—	—
[O III] 4364	—	—	—	—
He II Narrow	37.92 ± 0.42	185 ± 62	78 ± 25	1.67 ± 1.48
He II Broad	39.28 ± 0.12	2967 ± 63	1260 ± 25	38.32 ± 6.32
H β Narrow	39.04 ± 0.07	196 ± 62	282 ± 36	22.04 ± 3.96
Hβ Broad	39.95 ± 0.03	3381 ± 592	1471 ± 48	180.19 ± 7.39
[O III] 5007	39.92 ± 0.02	196 ± 62	282 ± 36	165.79 ± 4.04
He I Narrow	37.82 ± 0.34	185 ± 62	78 ± 25	1.35 ± 0.72
He I Broad	39.24 ± 0.07	3009 ± 64	1278 ± 26	35.28 ± 3.25
[O I] 6300	38.59 ± 0.07	185 ± 62	78 ± 25	7.87 ± 0.74
H α Narrow	39.54 ± 0.01	185 ± 62	78 ± 25	69.98 ± 0.82
Hα Broad	40.61 ± 0.01	3238 ± 65	1342 ± 25	838.61 ± 4.21
[N II] 6585	39.40 ± 0.01	185 ± 62	78 ± 25	51.57 ± 0.79
[S II] 6718	39.29 ± 0.02	185 ± 62	78 ± 25	39.51 ± 0.85
[S II] 6732	39.11 ± 0.02	185 ± 62	78 ± 25	26.35 ± 0.77

Emission Summary

H α Broad SNR	10.95
H β Broad SNR	3.15
H γ Broad SNR	0.51
AGN frac	0.07
Host frac	0.93
$\log L_{5100, \text{Host}}$	42.52
Fe II/H β	0.48
Fe II/[O III]	0.52

Quality Flags

spurious_hab/hbb	0/0
15100	2
balmer	0
balmer_snr	2
hb_width	0
balmer_width	0