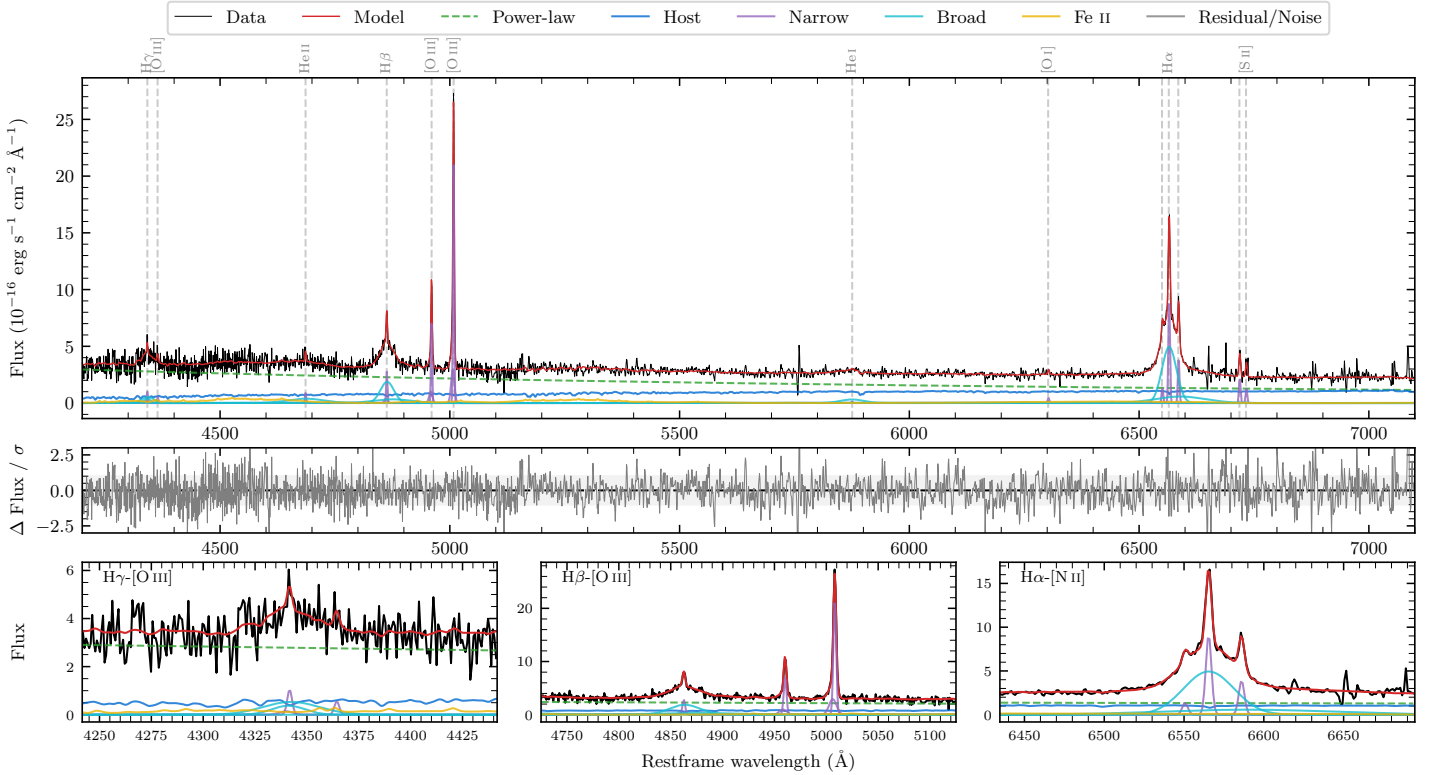
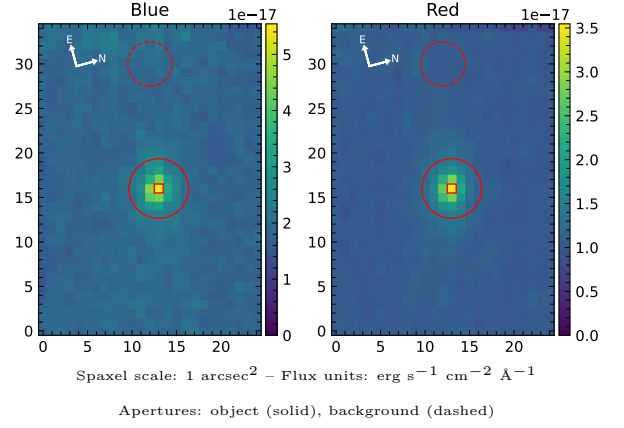


# 6dFGS gJ041421.6-190819

Spectrum ID	22440116_sp1	Spectrum Type	Sy 1.5
Alt name	g0414216-190819	Quality Flag	good
$z$	0.0944	AGN reference	6dFGS
RA, Dec	63.5900, -19.1386	MW $E(B - V)$	0.024
MJD	60266.54	Power law $\alpha_\nu$	$-0.20 \pm 0.20$
SNR/ $\text{\AA}$ B/R	7.4/9.9	$\log L_{5100, \text{AGN}}$	$43.38 \pm 0.03$
Obs Airmass	1.11	$\log H\beta_{\text{Br}}/[\text{O III}]$	$0.02 \pm 0.03$
SMSS ID	22440116	$\log M_{L5100}/M_\odot$	$7.39 \pm 0.06$
Closest SMSS	None $< 15''$	$\log M_{\text{H}\alpha}/M_\odot$	$6.92 \pm 0.03$
SMSS Mean $r_{\text{psf}}$	$17.7 \pm 0.1$	$\log M_{\text{H}\beta}/M_\odot$	$7.32 \pm 0.06$
2MASS $K_{\text{ext}}$	nan $\pm$ nan	$\log M_{[\text{O III}]} / M_\odot$	$7.45 \pm 0.06$



## Emission Line Measurements

Line	$\log L$ (erg s $^{-1}$ )	FWHM (km s $^{-1}$ )	$\sigma$ (km s $^{-1}$ )	EW ( $\text{\AA}$ )
H $\gamma$ Narrow	$40.01 \pm 0.20$	$209 \pm 63$	$141 \pm 27$	$1.64 \pm 0.73$
<b>H<math>\gamma</math> Broad</b>	<b><math>40.83 \pm 0.10</math></b>	<b><math>1837 \pm 321</math></b>	<b><math>685 \pm 98</math></b>	<b><math>9.99 \pm 1.32</math></b>
[O III] 4364	$39.61 \pm 0.30$	$199 \pm 63$	$81 \pm 25$	$0.65 \pm 0.35$
He II Narrow	$39.85 \pm 0.17$	$199 \pm 63$	$81 \pm 25$	$1.31 \pm 0.34$
He II Broad	$40.98 \pm 0.08$	$5926 \pm 390$	$2516 \pm 166$	$17.22 \pm 1.93$
H $\beta$ Narrow	$40.49 \pm 0.06$	$209 \pm 63$	$141 \pm 27$	$6.03 \pm 0.61$
<b>H<math>\beta</math> Broad</b>	<b><math>41.41 \pm 0.03</math></b>	<b><math>2375 \pm 150</math></b>	<b><math>1111 \pm 129</math></b>	<b><math>49.84 \pm 2.12</math></b>
[O III] 5007	$41.38 \pm 0.01$	$209 \pm 63$	$141 \pm 27$	$49.89 \pm 0.68$
He I Narrow	$39.06 \pm 0.42$	$199 \pm 63$	$81 \pm 25$	$0.32 \pm 0.28$
He I Broad	$40.70 \pm 0.07$	$2993 \pm 337$	$1271 \pm 143$	$13.40 \pm 1.34$
[O I] 6300	$39.68 \pm 0.16$	$199 \pm 63$	$81 \pm 25$	$1.51 \pm 0.40$
H $\alpha$ Narrow	$41.00 \pm 0.01$	$199 \pm 63$	$81 \pm 25$	$33.65 \pm 0.56$
<b>H<math>\alpha</math> Broad</b>	<b><math>41.83 \pm 0.01</math></b>	<b><math>1819 \pm 70</math></b>	<b><math>884 \pm 42</math></b>	<b><math>226.18 \pm 2.73</math></b>
[N II] 6585	$40.63 \pm 0.03$	$199 \pm 63$	$81 \pm 25$	$14.45 \pm 0.48$
[S II] 6718	$40.38 \pm 0.03$	$199 \pm 63$	$81 \pm 25$	$8.37 \pm 0.48$
[S II] 6732	$40.15 \pm 0.07$	$199 \pm 63$	$81 \pm 25$	$4.99 \pm 0.60$

## Emission Summary

H $\alpha$ Broad SNR	12.17
H $\beta$ Broad SNR	4.87
H $\gamma$ Broad SNR	2.13
AGN frac	0.74
Host frac	0.26
$\log L_{5100, \text{Host}}$	42.93
Fe II/H $\beta$	0.84
Fe II/[O III]	0.88

## Quality Flags

spurious_hab/hbb	0/0
15100	0
balmer	0
balmer_snr	1
hb_width	0
balmer_width	0