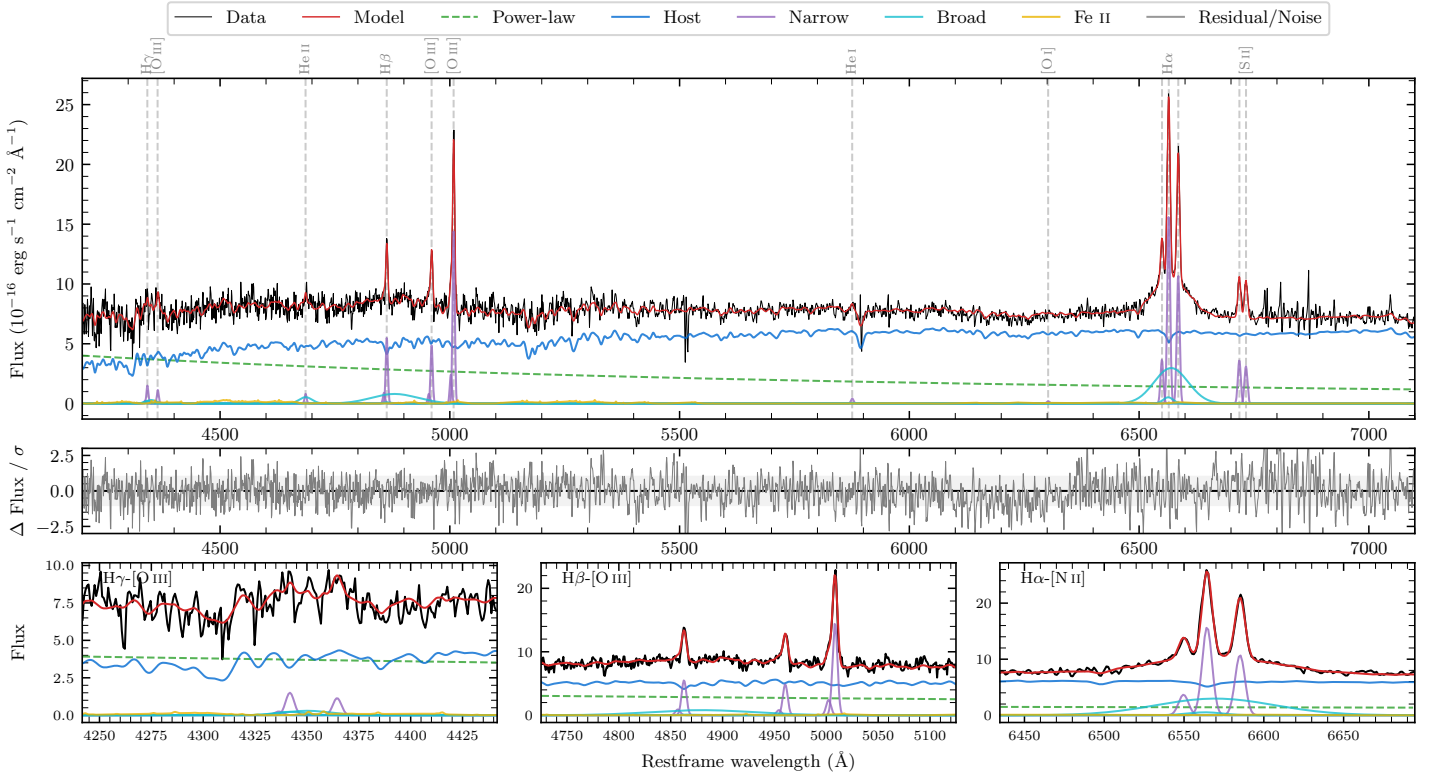
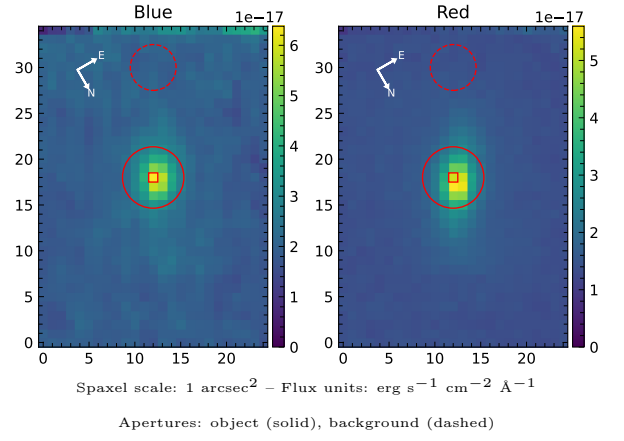


LEDA 3080556

Spectrum ID	22267460_sp2	Spectrum Type	Sy 1.5
Alt name	g0404473-034757	Quality Flag	good
z	0.0692	AGN reference	6dFGS
RA, Dec	61.1972, -3.7992	MW $E(B - V)$	0.081
MJD	60554.77	Power law α_ν	0.32 ± 0.15
SNR/ \AA B/R	12.4/21.6	$\log L_{5100, \text{AGN}}$	43.18 ± 0.03
Obs Airmass	1.17	$\log H\beta_{\text{Br}}/[\text{O III}]$	0.02 ± 0.05
SMSS ID	22267460	$\log M_{L5100}/M_\odot$	8.21 ± 0.07
Closest SMSS	None $< 15''$	$\log M_{\text{H}\alpha}/M_\odot$	7.33 ± 0.06
SMSS Mean r_{psf}	16.4 ± 0.1	$\log M_{\text{H}\beta}/M_\odot$	8.10 ± 0.08
2MASS K_{ext}	12.6 ± 0.1	$\log M_{[\text{O III}]} / M_\odot$	8.22 ± 0.07



Emission Line Measurements

Line	$\log L$ (erg s $^{-1}$)	FWHM (km s $^{-1}$)	σ (km s $^{-1}$)	EW (\AA)
H γ Narrow	40.05 ± 0.19	351 ± 63	191 ± 26	2.58 ± 0.54
Hγ Broad	—	—	—	—
[O III] 4364	39.86 ± 0.21	334 ± 63	141 ± 25	1.72 ± 0.49
He II Narrow	39.75 ± 0.26	334 ± 63	141 ± 25	1.54 ± 0.51
He II Broad	40.37 ± 0.16	2096 ± 64	890 ± 26	6.44 ± 1.26
H β Narrow	40.66 ± 0.04	351 ± 63	191 ± 26	13.79 ± 0.60
Hβ Broad	41.11 ± 0.05	6786 ± 483	2594 ± 35	38.84 ± 2.52
[O III] 5007	41.10 ± 0.01	351 ± 63	191 ± 26	40.12 ± 0.67
He I Narrow	39.56 ± 0.23	334 ± 63	141 ± 25	1.69 ± 0.54
He I Broad	—	—	—	—
[O I] 6300	39.27 ± 0.33	334 ± 63	141 ± 25	1.03 ± 0.56
H α Narrow	41.18 ± 0.01	334 ± 63	141 ± 25	91.41 ± 0.80
Hα Broad	41.56 ± 0.01	3517 ± 219	1431 ± 26	218.49 ± 2.62
[N II] 6585	41.01 ± 0.01	334 ± 63	141 ± 25	63.11 ± 0.78
[S II] 6718	40.55 ± 0.02	334 ± 63	141 ± 25	22.79 ± 0.78
[S II] 6732	40.49 ± 0.03	334 ± 63	141 ± 25	19.78 ± 0.79

Emission Summary

H α Broad SNR	5.48
H β Broad SNR	1.45
H γ Broad SNR	0.94
AGN frac	0.34
Host frac	0.66
$\log L_{5100, \text{Host}}$	43.47
Fe II/H β	0.45
Fe II/[O III]	0.46

Quality Flags

spurious_hab/hbb	0/0
15100	1
balmer	1
balmer_snr	2
hb_width	0
balmer_width	1